

Huang, J., Chen, H., Lin, X., An, K., Cheng, X., Li, Y., Yang, X., Zhang, L., and Chen, C., 2023, Intracontinental convergence accommodated by underthrusting of Tarim Basin beneath central Tian Shan, Central Asia: Insights from Cenozoic upper crust deformation across the western Kepingtage fold-and-thrust belt in the northern Tarim Basin: GSA Bulletin, <https://doi.org/10.1130/B36927.1>.

Supplemental Material

Figure S1. The original uninterpreted seismic reflection profile of Line B-B' and related observations, with its location shown in Figure 1.

Figure S2. The original uninterpreted seismic reflection profile of Line C-C' and related observations, with its location shown in Figure 1.

Figure S3. The original uninterpreted seismic reflection profile of Line D-D' and related observations, with its location shown in Figure 1.

Figure S4. The original uninterpreted seismic reflection profile of Line E-E' and related observations, with its location shown in Figure 1.

Supplemental Material

Intracontinental convergence accommodated by underthrusting of Tarim Basin beneath central Tian Shan, Central Asia: Insights from Cenozoic upper crust deformation across the western Kepingtage fold-and-thrust belt in the northern Tarim Basin

Contents of this file

Figure S1

Figure S2

Figure S3

Figure S4

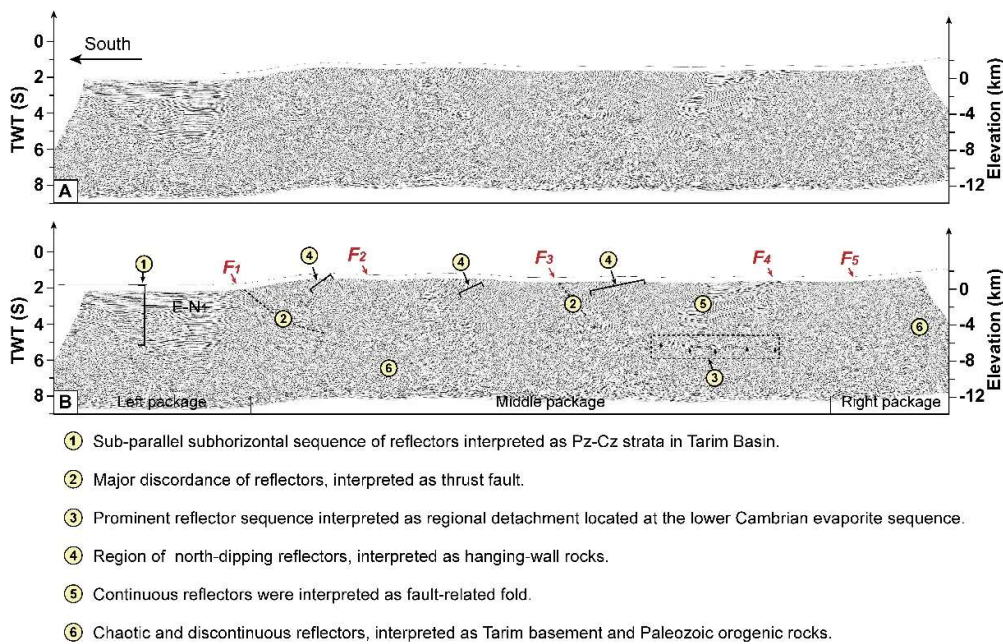


Figure S1. The original uninterpreted seismic reflection profile of Line B-B' and related observations, with its location shown in Figure 1.

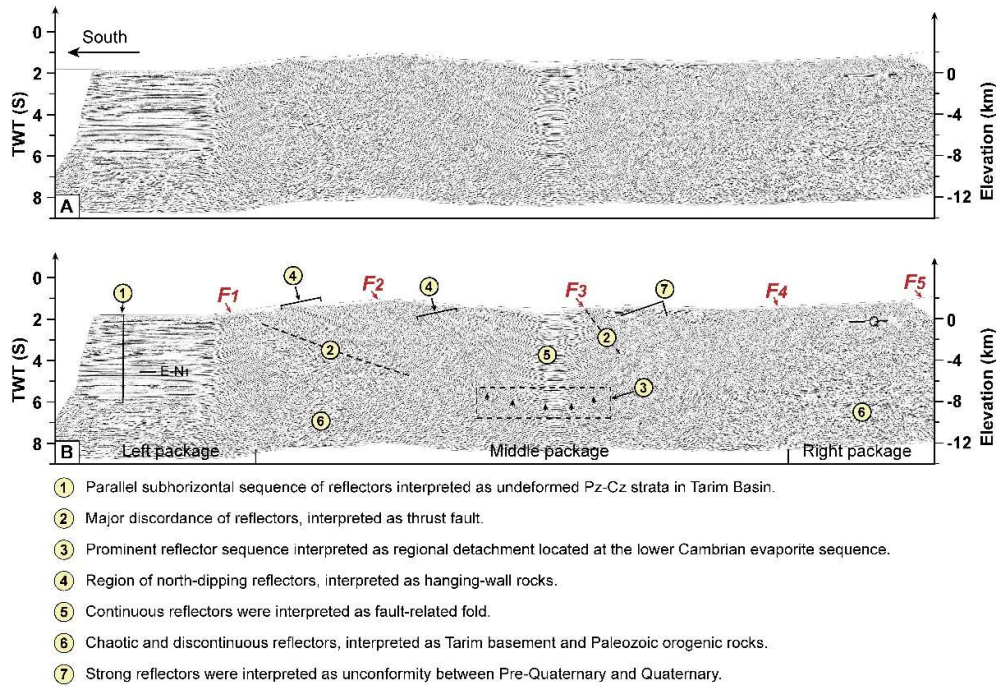
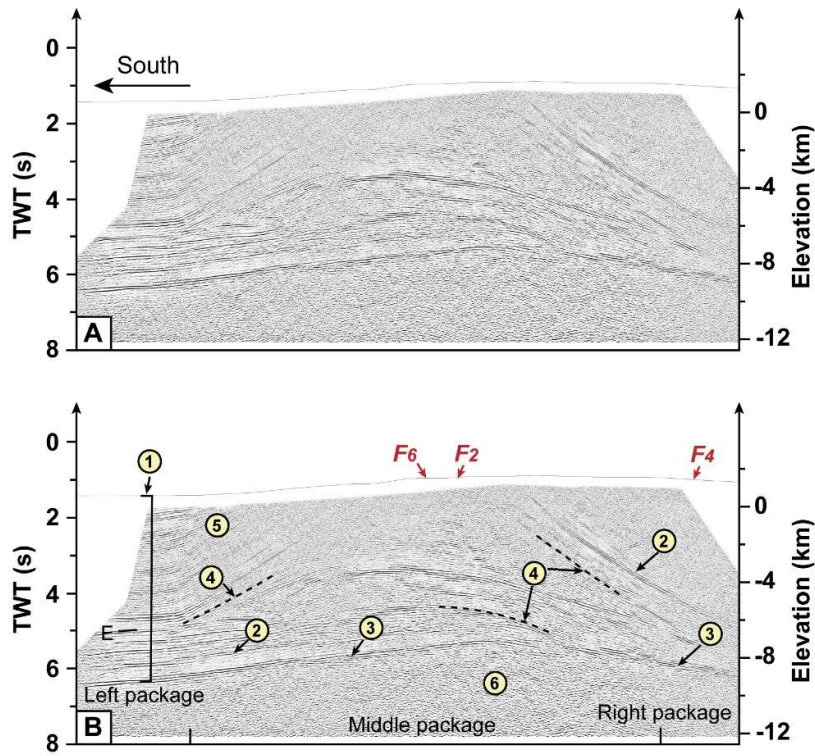
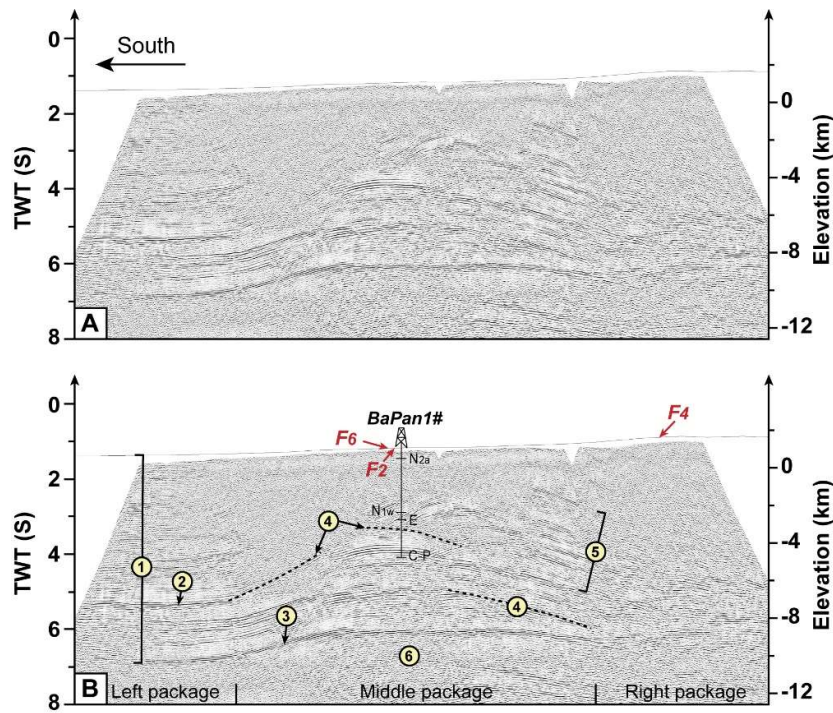


Figure S2. The original uninterpreted seismic reflection profile of Line C-C' and related observations, with its location shown in Figure 1.



- ① Parallel subhorizontal sequence of reflectors interpreted as undeformed Pz-Cz strata in Tarim Basin.
- ② Prominent reflector sequence interpreted as Carboniferous-Permian strata.
- ③ Prominent reflector sequence interpreted as Cambrian-Devonian strata.
- ④ Major discordance of reflectors, interpreted as thrust fault.
- ⑤ Region of south-dipping reflectors, interpreted as the front limb of anticline.
- ⑥ Chaotic and discontinuous reflectors, interpreted as Tarim basement.

Figure S3. The original uninterpreted seismic reflection profile of Line D-D' and related observations, with its location shown in Figure 1.



- ① Parallel subhorizontal sequence of reflectors interpreted as undeformed Pz-Cz strata in Tarim Basin.
- ② Prominent reflector sequence interpreted as Paleogene strata.
- ③ Prominent reflector sequence interpreted as Cambrian-Devonian strata.
- ④ Major discordance of reflectors, interpreted as thrust fault.
- ⑤ Region of north-dipping reflectors, interpreted as hanging-wall rocks.
- ⑥ Chaotic and discontinuous reflectors, interpreted as Tarim basement.

Figure S4. The original uninterpreted seismic reflection profile of Line E-E' and related observations, with its location shown in Figure 1.