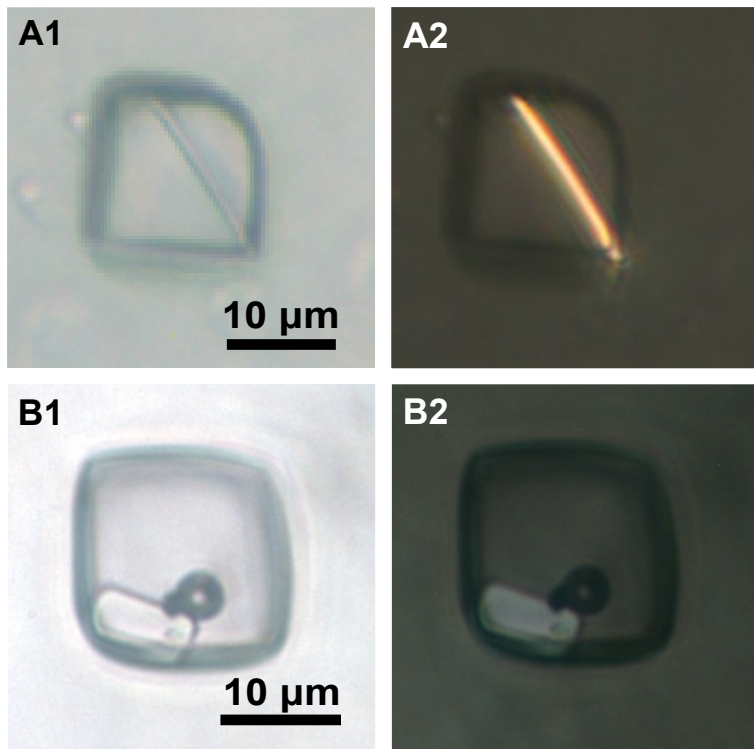


Supplementary Figure S1. Suspect microorganisms in primary fluid inclusions in Browne Formation bedded halite. A1 (plane transmitted light), A2 (combined plane and UV-vis light) and A3 (UV-vis light): single clear cocci that fluoresces pale blue. B1 (plane transmitted light), B2 (combined plane and UV-vis light) and B3 (UV-vis light): single pale orange algae that fluoresces pale yellow.



Supplemental Figure S2: Examples of accidental daughter crystals in primary fluid inclusions in Browne Formation bedded halite. A1 (plane transmitted light) and A2 (XPL): acicular accidental daughter crystal. B1 (plane transmitted light) and B2 (XPL): tabular accidental daughter crystal and air bubble.