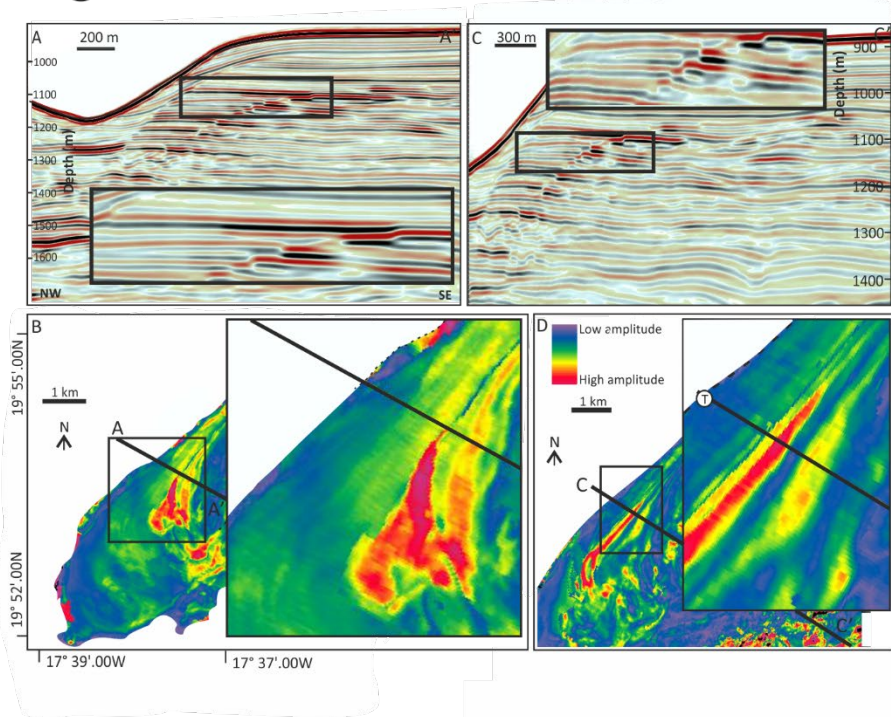


Davies, R.J., et al., 2021, Climatically driven instability of marine methane hydrate along a canyon-incised continental margin: *Geology*, v. 49, <https://doi.org/10.1130/G48638.1>

## Figure 2 - without interpretation



## Figure 3 - without interpretation

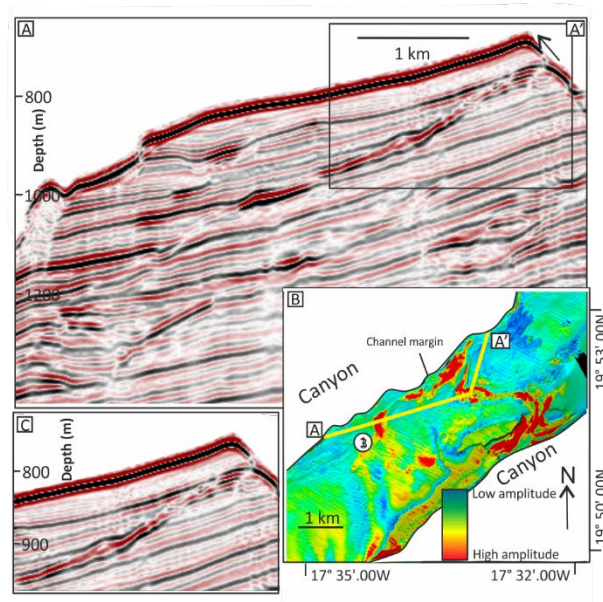


Figure S1. Figures 2 and 3 without any interpretation.

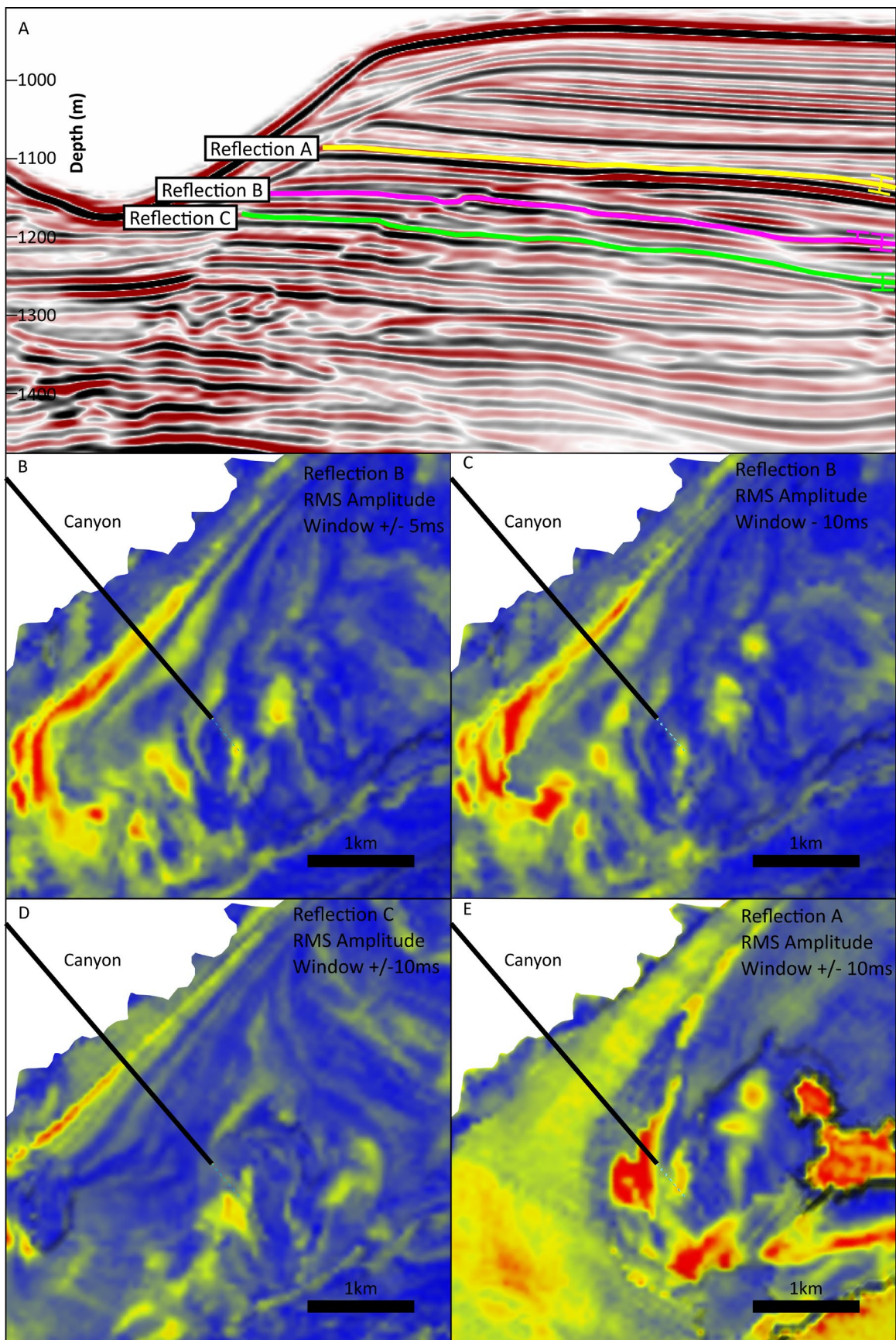


Figure S2. A) Seismic line across a canyon showing reflections A, B and C. Ticks show the approximate window for the RMS amplitude maps. (B)  $\pm 10$  ms (milliseconds) across reflection B showing Lols. (C)  $(- 10$  ms) below reflection B, (D)  $\pm 10$  ms across reflection C. (C)  $\pm 10$  ms across reflection A.