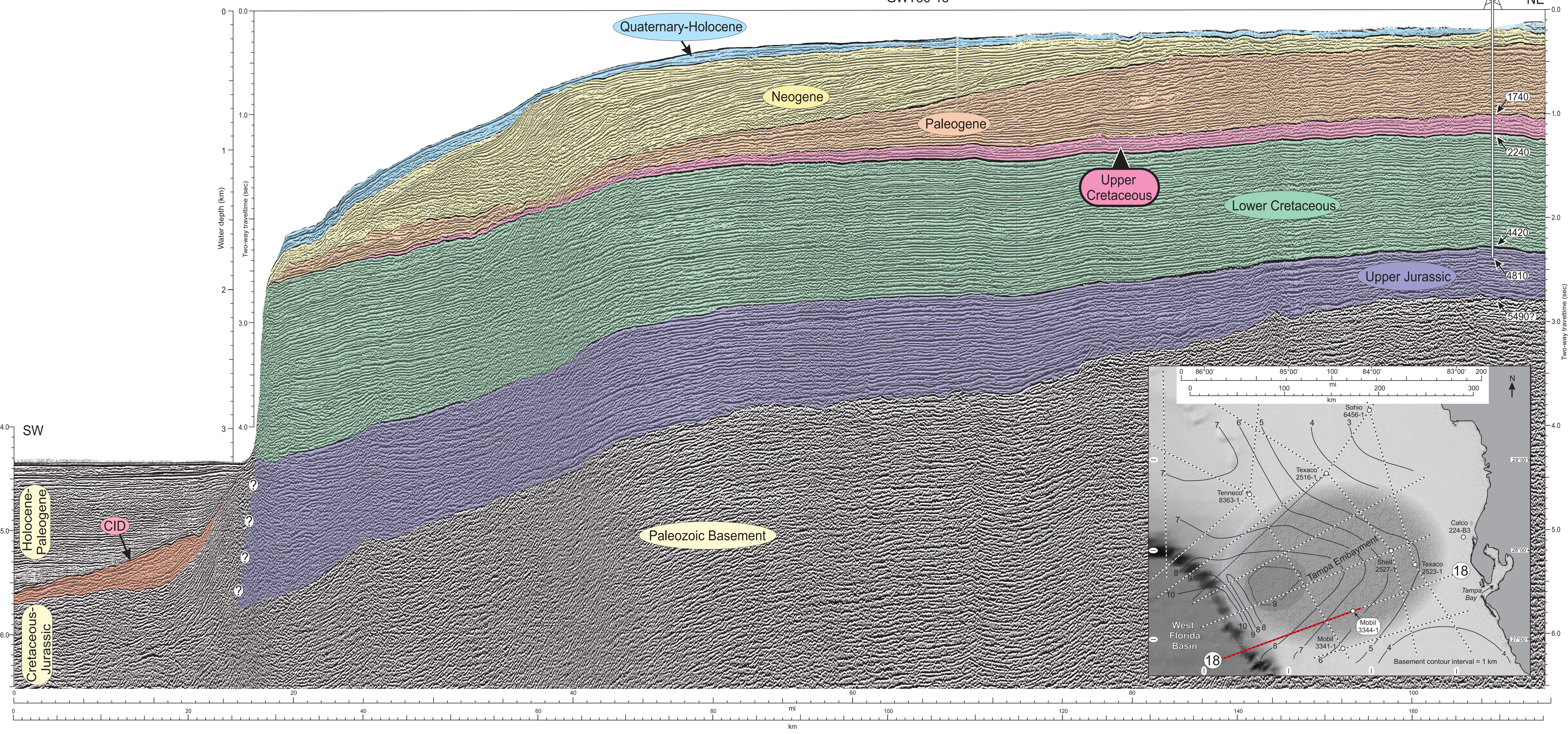
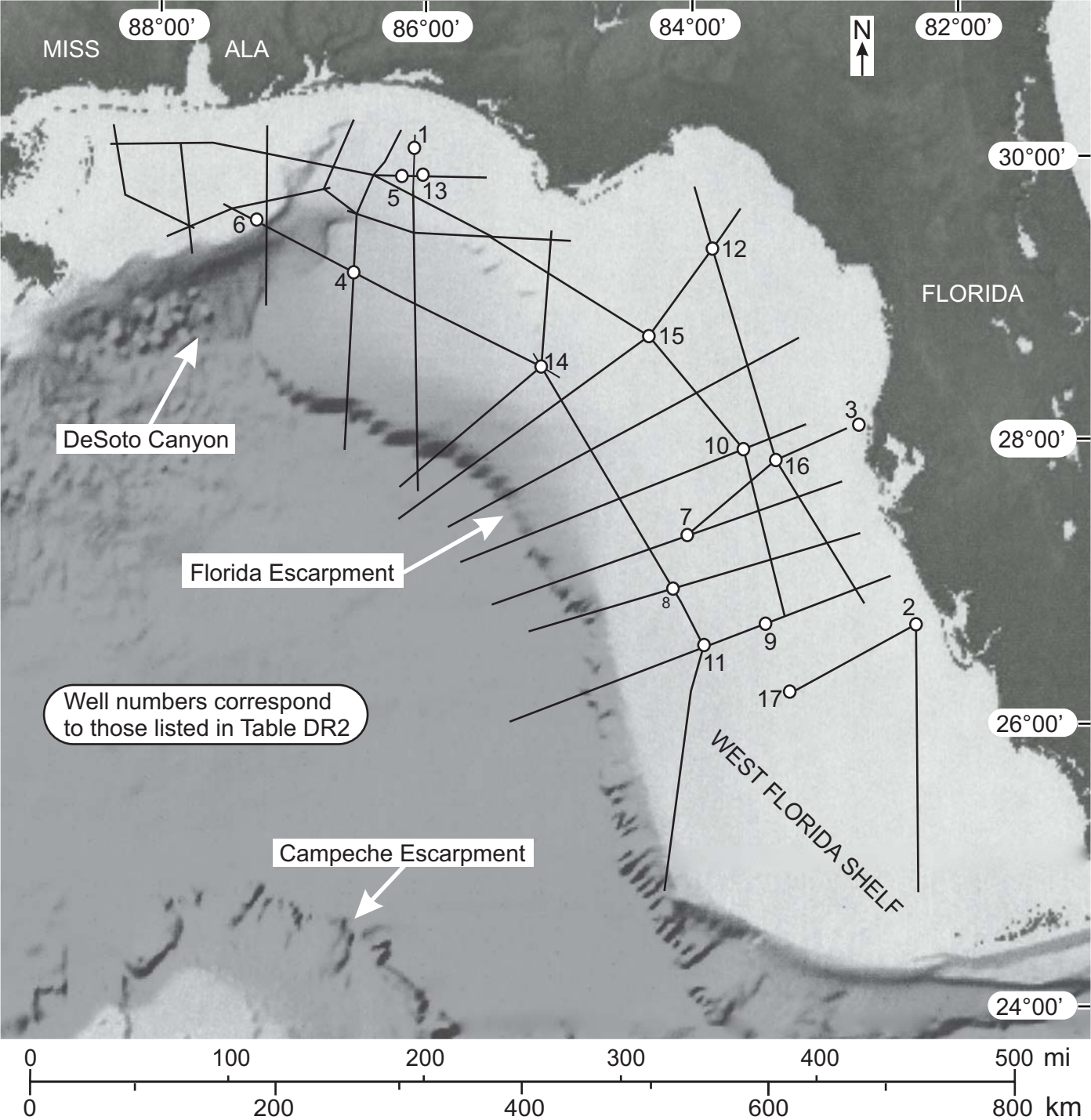


GSA Data Repository 2017347

Poag, 2017, Shaken and stirred: Seismic evidence of Chicxulub impact effects on the West Florida carbonate platform, Gulf of Mexico: *Geology*, doi:10.1130/G39438.1.



Poag-Figure DR1
 This migrated dip section across the West Florida carbonate platform comprises the seaward 175 km of multichannel seismic reflection profile GWT86-18 (red segment on location map). Note the dominance (greatest thickness) of the Lower Cretaceous interval versus that of the thin Upper Cretaceous interval (Selma/Pine Key and Tuscaloosa/Atkinson units). The S/PK and T/A units are truncated before reaching the escarpment face. The upper CID seismic couplet represents the final pelagic depositional phase of the CID. Depths in Mobil 3344-1 well measured in meters below sea level. Basement contours indicate kilometers below sea level (modified from Dobson and Buffler, 1997).



Poag-Fig. DR2

TABLE DR1. DATA FOR SEISMIC LINES USED IN THIS STUDY

Line number	Line direction	Shot Point interval	Shot Points acquired	Line length (mi)
0001	NW-SE	98.4	102-11,410	210.7
0002	NW-SE	98.4	780-12,090	210.8
0003	N-S	98.4	101-6,508	119.4
0004	NW-SE	98.4	2,780-8,924	114.5
0005	SW-NE	82.0	101-3,709	56.0
0006	NW-SE	98.4	101-8,656	159.4
0007	SW-NE	82.0	101-4,444	67.5
0008	SW-NE	98.4	101-6,508	119.4
0009	S-N	98.4	101-6,218	113.9
0011	S-N	98.4	42-8,935	165.7
0012	SW-NE	98.4	108-9,889	182.3
0013	SW-NE	98.4	41-2,147	39.2
0014	N-S	98.4	41-4,744	87.6
0015	NW-SE	98.4	101-3,020	54.6
0016	SW-NE	98.4	25-8,950	166.3
0017	E-W	98.4	101-3,845	69.8
0018	SW-NE	98.4	101-8,700	160.3
0019	W-E	49.2	101-4,766	43.5
0020	SW-NE	98.4	31-8,730	162.1
0021	NW-SE	82.0	7-1,393	21.5
0022	SW-NE	98.4	101-9,400	173.3
0023	SW-NE	82.0	7-4,916	76.2
0024	W-E	164.0	3,265-5,535	70.5
0025	NW-SE	82.0	102-2,441	36.3
0026	NW-SE	82.0	101-2,294	34.1
0027	NW-SE	98.4	101-3,438	62.2
0028	NW-SE	98.4	3,269-11,216	148.1
0029	NW-SE	98.4	101-3,325	60.1
0030	N-S	82.0	101-2,597	38.8
0031	NW-SE	98.4	42-8,088	149.9
0032	NW-SE	98.4	41-1,737	31.6
0033	W-E	98.4	140-5,310	96.4
0034	E-W	82.0	819-1,018	135.4

TABLE DR2. STRATIGRAPHIC TIE WELLS USED IN THIS STUDY

Map No.	Operator	Lease	*Total Depth (m)	*Total Depth (ft)
1.	Amoco	2502-1	5,559.9	18,242
2.	Calco	Fla. St. 224-B-1	4,247.5	13,936
3.	Calco	Fla. St. 224-B-3	3,207.6	10,524
4.	Chevron	6438-1	7,620.0	25,000
5.	Exxon	2486-1	5,442.2	17,855
6.	Gulf	2468-1	6,361.2	20,870
7.	Mobil	3341-1	5,498.3	18,040
8.	Mobil	3344-1	4,810.4	15,782
9.	Odeco	3909-1	3,396.8	11,145
10.	Shell	2527-1	5,599.6	18,371
11.	Shell	3912-1	3,737.0	12,261
12.	Sohio	6456-1	4,829.6	15,845
13.	Sun	2490-1	5,340.5	17,521
14.	Tenneco	8363-1	3,739.5	12,269
15.	Texaco	2516-1	4,749.4	15,582
16.	Texaco	2523-1	5,274.3	17,304
17.	Texaco	2527-1	5,583.9	18,320

* Depth measured from sea level