

GSA Data Repository 2016146

Seismic interpretation of crustal-scale extension in the Intermontane Belt of the northern Canadian Cordillera

Andrew J. Calvert

Supplementary Figures

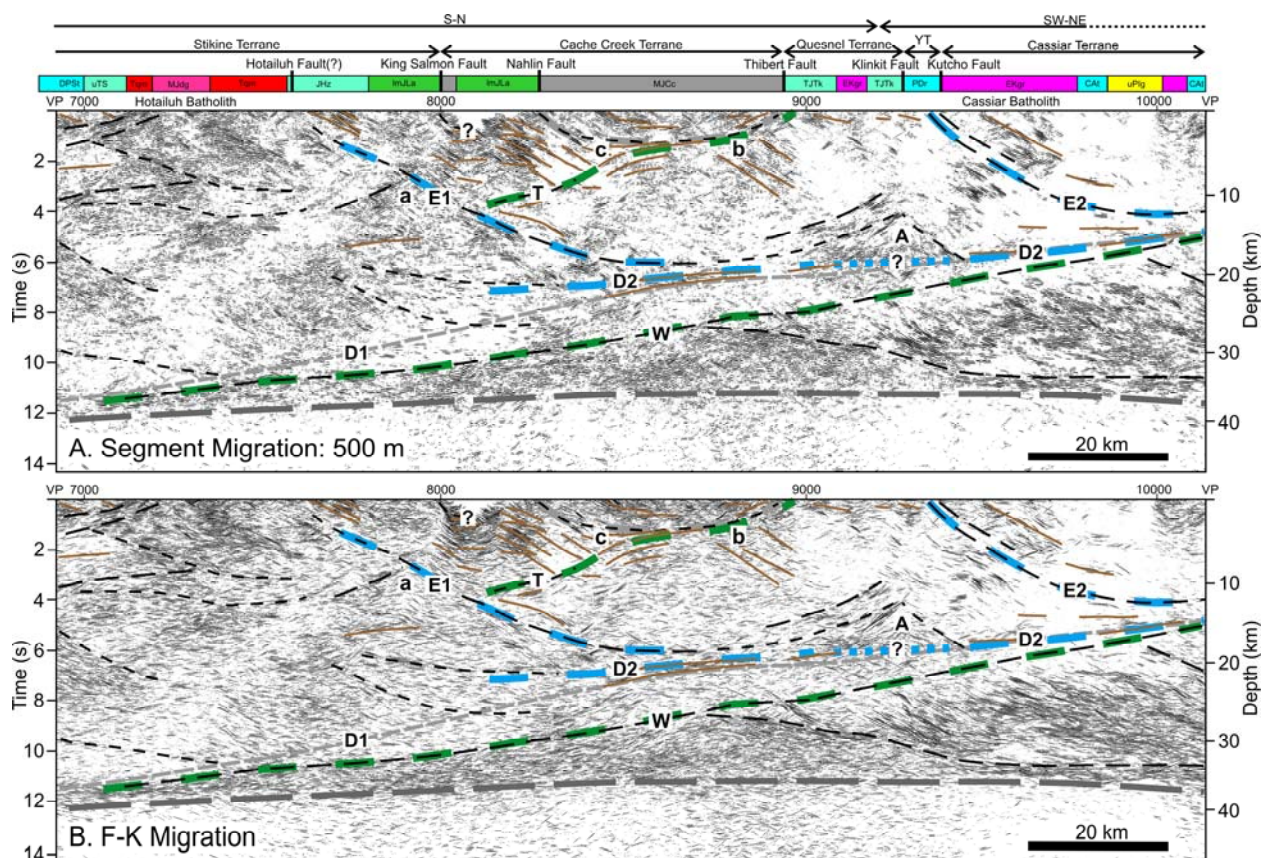


Figure DR1: Additional displays of Figure 2 with interpretation: A. Segment migration derived using a lateral smoothing of 500 m, as in Figure 2. B. F-K wave equation migration with subsequent coherency filtering for display.

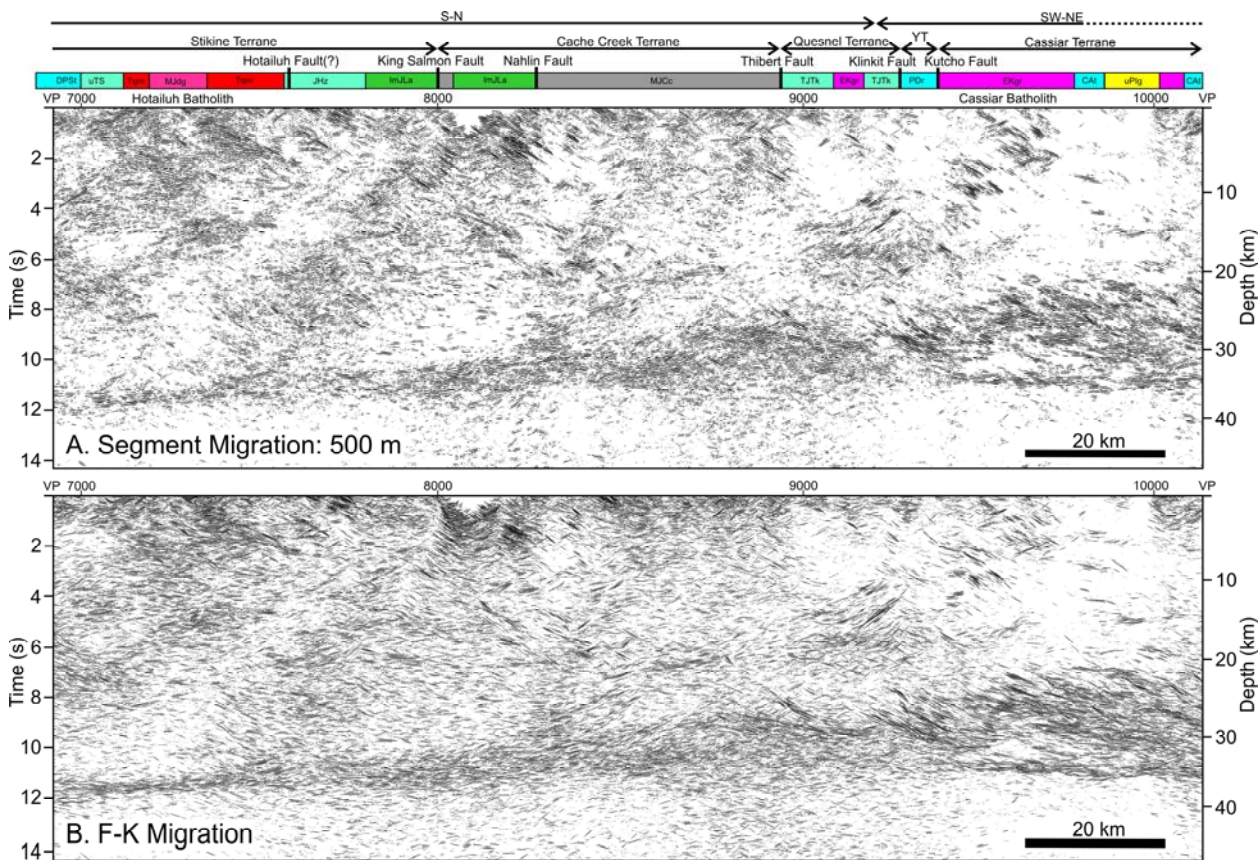


Figure DR2: Additional displays of Figure 2 without interpretation: A. Segment migration derived using a lateral smoothing of 500 m, as in Figure 2. B. F-K wave equation migration with subsequent coherency filtering for display.