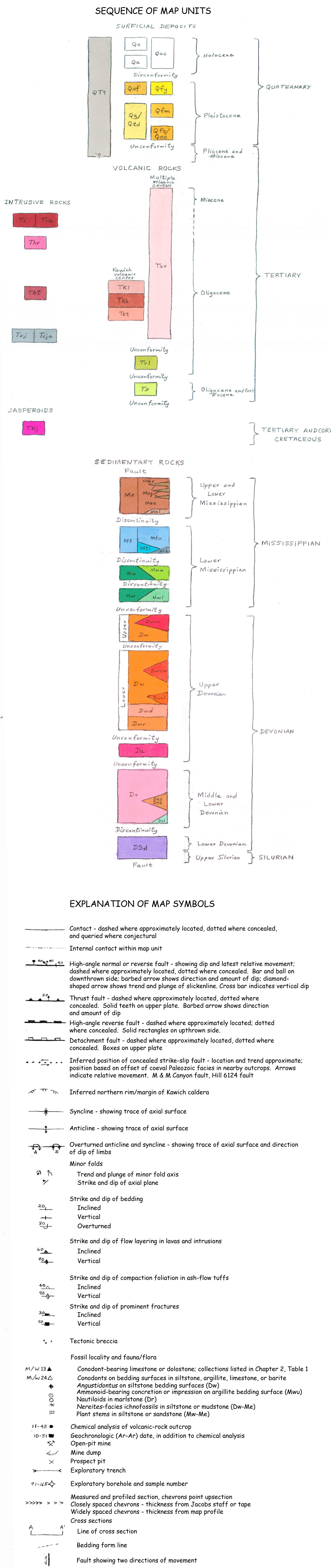


By  
e and  
2015



Qa/Qc/Qac	- Active alluvium in washes (Qa) (Holocene); Qc - Hillslope alluvium (Holocene); Qac - Alluvium and colluvium, undivided (Holocene).
Qel	- Alluvial fan (Pleistocene).
Qly	- Younger alluvial fan (lowest level terrace deposits) (Pleistocene).
Qgr/Qtd	- Stream-terrace gravels (Qgr) and volcanic detritus (Qtd) (Pleistocene).
Qfm	- Medial alluvial fan (intermediate level terrace) deposits (Pleistocene).
Qfo/Qca	- Older alluvial fan (highest level terrace) (Qfo) and pediment deposits (Qca) (Pleistocene).
QTr	- Tufa/travertine deposits (Holocene to Miocene).
Ti/Tia	- Altered tonalite dikes and sills (T1) (Neogene); Tia - Intensely altered felsic dikes.
Thr	- Rhyolite of Highway 6 (upper Oligocene).
ThT	- Tonalite of Highway 6 (upper Oligocene).
ThL	- Lithic tuff of Kawich caldera (upper Oligocene).
Tbk	- Silicified-tuff breccia of Kawich caldera (upper Oligocene).
Tkt	- Biotite tuff of Kawich caldera (upper Oligocene).

TsJ	TsJ <sub>o</sub> - Skjopsack tonalite/dacite to diorite/andesite (TsJ <sub>o</sub> (lower Oligocene). TsJ <sub>o</sub> - Intensely altered.
Tuv	Tuv - Undifferentiated volcanic rocks (Miocene and Oligocene). Tuv <sub>g</sub> - local conglomerate
Tvl	Tvl - Volcaniclastic fluvial-lacustrine deposits and bedded tuffs (lower Oligocene).
Ts	Ts - Tuffaceous deposits (lower Oligocene and [or] Eocene).
TJk	TJk - Jasperoid (lower Tertiary or Cretaceous).
Me/Ms	Me/Ms - Eleona Formation, undivided (Me) (Upper and Lower Mississippian); Mes - Siltstone and mudstone (Upper and Lower Mississippian).
Meq	Meq - Quartzite and conglomerate of Eleona Formation (Upper and Lower Mississippian).
MeL	MeL - Lowermost clastic unit of Eleona Formation (Lower Mississippian).
Mt/Mtu	Mt/Mtu - Tripion Pass Limestone, undivided (Mt) (Lower Mississippian); Mtu - Upper unit of upper member (Lower Mississippian).
MtL	MtL - Lower unit of upper member of Tripion Pass Limestone (Lower Mississippian).
MtB	MtB - Lower (basal) member of Tripion Pass Limestone (Lower Mississippian).
Mw	Mw - Webb Formation, undivided (Lower Mississippian).
Nwu	Nwu - Upper member of siliceous argillite-siltite and chert of Webb Formation (Lower Mississippian).

Mwl	- Lower member of chert and argillite of Webb Formation (Lower Mississippian).
Dw/Dwc	- Woodruff Formation, undivided (Dw) (Upper Devonian); Dwc - Un differentiated chert and silstone units of Woodruff Formation.
Dwcw	- Upper chert and silstone unit of Woodruff Formation (Upper Devonian).
Dwcw	- Middle chert and silstone unit of Woodruff Formation (Upper Devonian).
Dwcl	- Lower chert and silstone unit of Woodruff Formation (Upper Devonian).
Dwd	- Pale-red unit of Woodruff Formation (Upper Devonian).
Dwr	- Ribbon chert unit of Woodruff Formation (Upper Devonian).
Da	- Alama Breccia (Upper Devonian).
Dr	- Warm Springs Formation, undivided (Middle and Lower Devonian).
Dr3/DrC	- Sandy limestone with silstone partings and some chert of Warm Springs Formation (Dr3) (Middle or Lower Devonian); DrC - Bedded chert.
Dnl	- Sandy limestone and dolomitic limestone of Warm Springs Formation (Lower Devonian).
Dsd	- Dolostone, undivided (Devonian and Silurian).

