

Figure DR1 - Uninterpreted large-format versions of seismic sections shown in Fig. 2

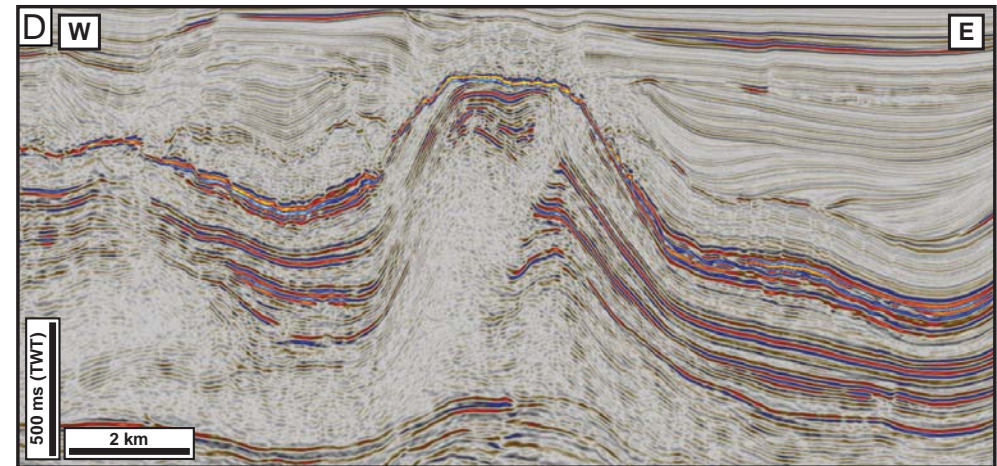
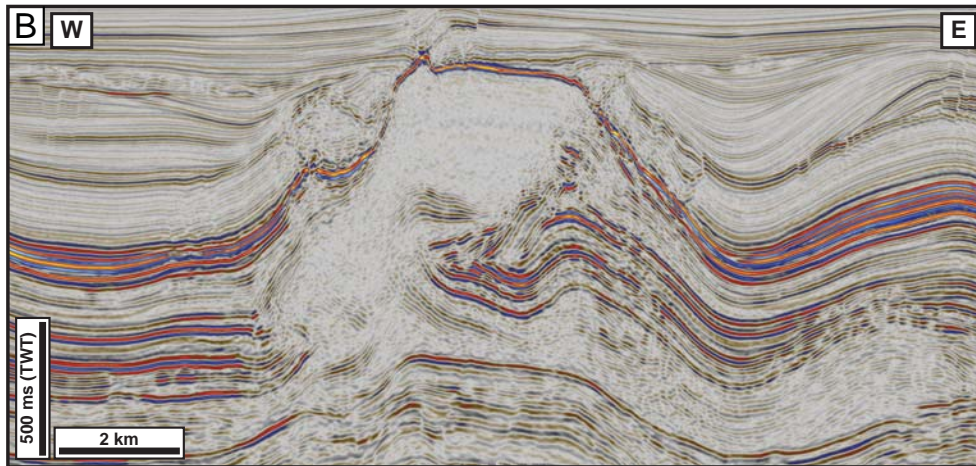
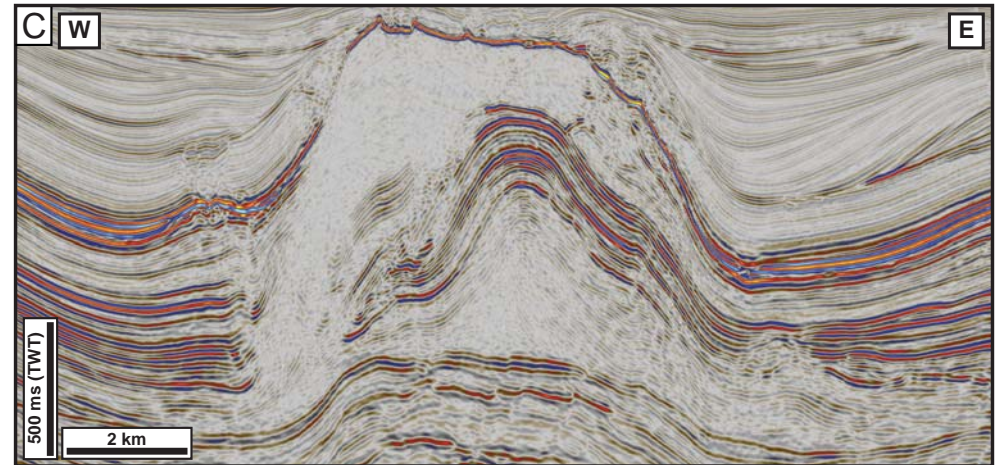
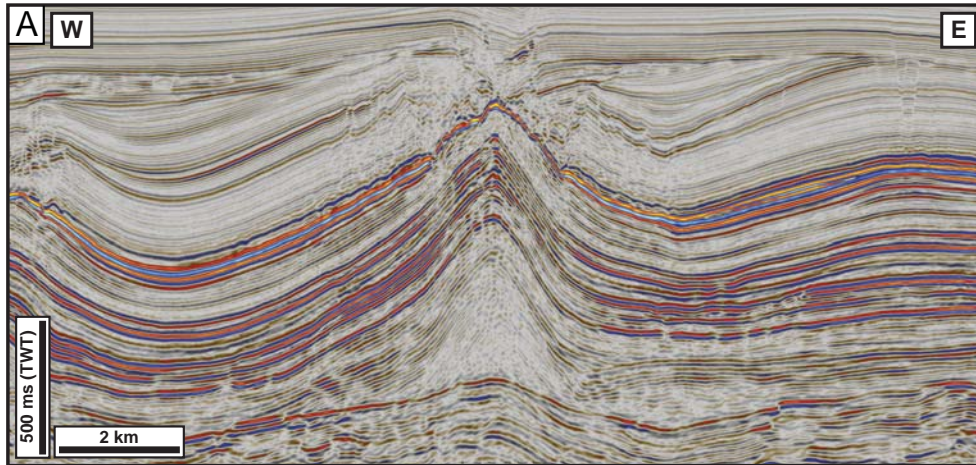


Figure DR2 - Uninterpreted large-format version of seismic section shown in Fig. 3

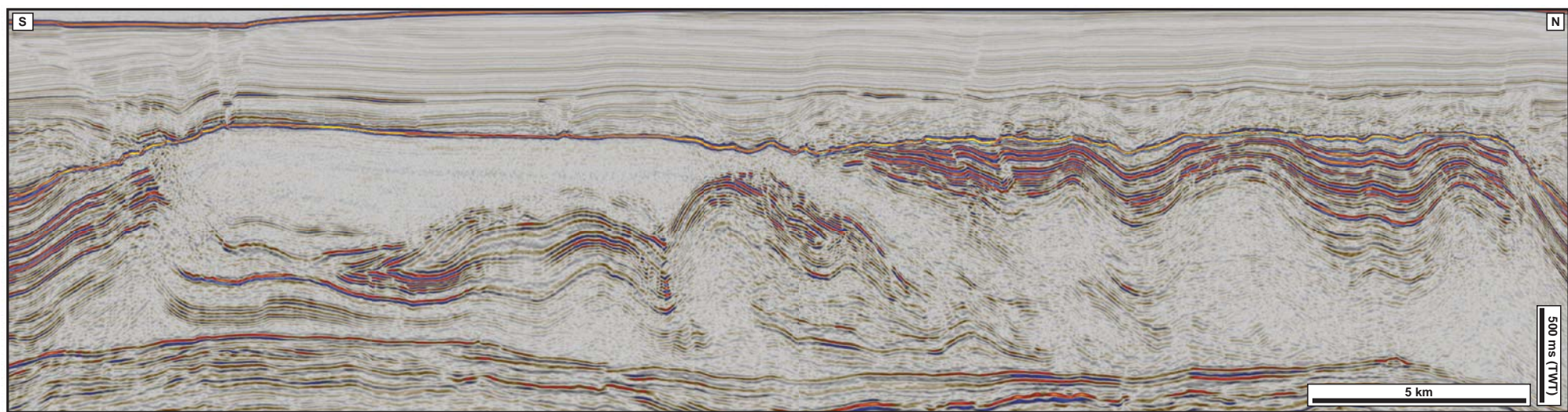


Table DR1. Physical and seismic characteristics of the Aptian evaporite-dominated unit in the Santos Basin

<i>Stratigraphic Unit</i>	<i>Thickness (m)</i>	<i>Halite content (%)</i>	<i>Mean Density (kg m³)</i>	<i>Aggregated Density (kg m³)</i>	<i>Seismic expression*</i>	<i>Comments</i>
A1	335-1170	80-98	2137	2.14	chaotic, low-amplitude reflections	Mobile unit; highly variable thickness due to post-depositional flow
A2	465-825	68-86	2144	2.26	parallel, continuous, high-amplitude reflections	Contains thick (50-235 m), dense (2150-2244 km m ³), anhydrite layers
A3	265-345	70-93	2105		parallel, continuous, low-to-moderate amplitiude reflections	Fairly uniform thickness across study area
A4	0-260	30-86	2258		parallel, continuous, very high-amplitude reflections	Relatively thin but very high density; locally eroded from salt structure crests

*see Figs 2 and 3