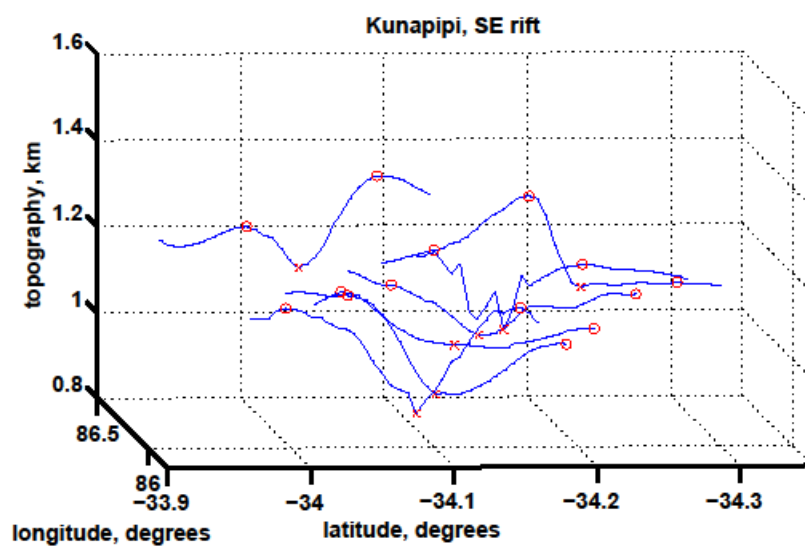
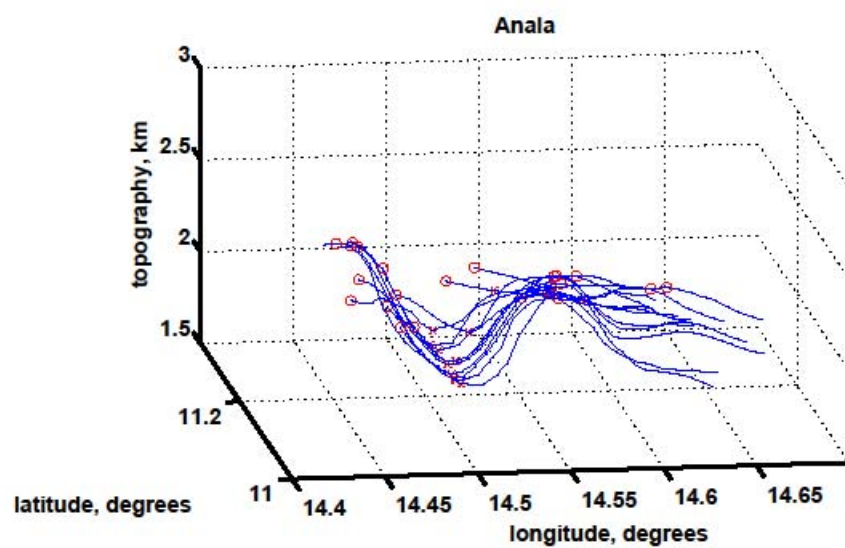
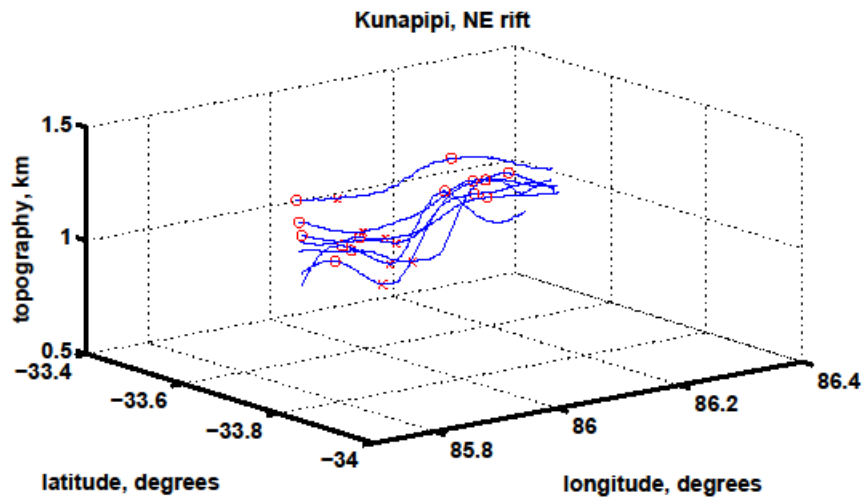


Supplementary Figure DR1. Stereo-derived DEM topography (color shading) over Magellan SAR backscatter, as in Figure 1. Insets show Magellan DEM. White lines show tracks of topographic transects used for fault throw determination. (A) Anala Mons. (B) Kunapipi Mons.





Supplementary Figure DR2. Three-dimensional rendering of topographic transects used for fault throw determination (blue lines). Circles indicate points at each end of the graben used for fault throw calculation. "X" symbols indicate lowest point in graben, used for fault throw calculation and for calculation of radius from center of feature. (A) Anala Mons. (B) Kunapipi Mons, southeast rift. (C) Kunapipi Mons, northeast rift.