


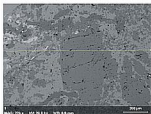
Supplementary Figure. 1. Elements profiling of feldspar using Energy Dispersive Spectra.

Supplementary Figure. 2. An inverse isochron plot (Between ^{40}Ar - ^{39}Ar and ^{40}Ar - ^{36}Ar). The intercept with the $^{36}\text{Ar}/^{40}\text{Ar}$ axis gives the trapped Argon composition. The intercept with the $^{39}\text{Ar}/^{40}\text{Ar}$ axis gives the radiogenic Argon composition.

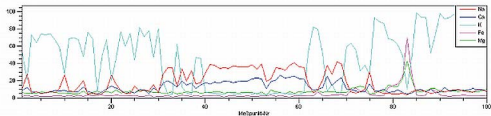


Supplementary Fig. 1

Line scan in EDS showing replacement of Na (red line) by K (sky blue) at the margins and interstitial spaces of plagioclase (BSE image).



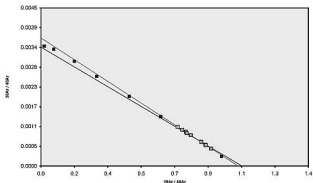
Date: 04/03/2008 15:48:25
Image size: 1000 x 750
Mag: 274.63251 x
HV: 20.0 kV



Line scan
Date: 04/03/2008 15:52:10
Measure time: 2:42 min
Start: (17,320) End: (1000,310)
Length: 1200 μ m

Supplementary Fig. 2

RC5F028A.AGE >>> SSZ-03 (E7-88)



Ar-Ages in Ma

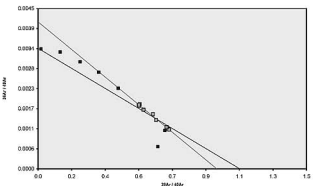
Weighted Plateau
 9.60 ± 0.07
 Total Fusion
 9.65 ± 0.06
 Normal Isochron
 9.99 ± 0.09
 Inverse Isochron
 9.99 ± 0.09

MSWD
 0.53

Sample Info

Bottle
 R Clark NW India
 msp
 c154-
 0.00591 (J)

RC5F028A.AGE >>> SSZ-04 (E7-86)



Ar-Ages in Ma

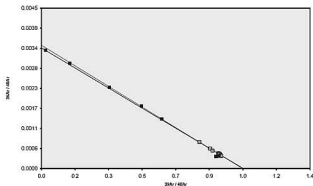
Weighted Plateau
 9.48 ± 0.28
 Total Fusion
 9.05 ± 0.09
 Normal Isochron
 10.69 ± 0.30
 Inverse Isochron
 10.69 ± 0.29

MSWD
 4.65

Sample Info

Bottle
 Ryan Clark
 msp
 c154-
 0.00693 (J)

RC5F028B.AGE >>> SSZ-05 (E7-87)



Ar-Ages in Ma

Weighted Plateau
 10.34 ± 0.06
 Total Fusion
 10.37 ± 0.06
 Normal Isochron
 10.37 ± 0.12
 Inverse Isochron
 10.38 ± 0.12

MSWD
 2.11

Sample Info

Bottle
 R Clark NW India
 msp
 c154-
 0.00595 (J)