

Supplemental Figures



Figure DR1. Photo-mosaic along the main Greenwater stream. This stream offers a nearly continuous exposure of the slump. We have combined this information with field data to elaborate a geological-cross section (Fig. 3).

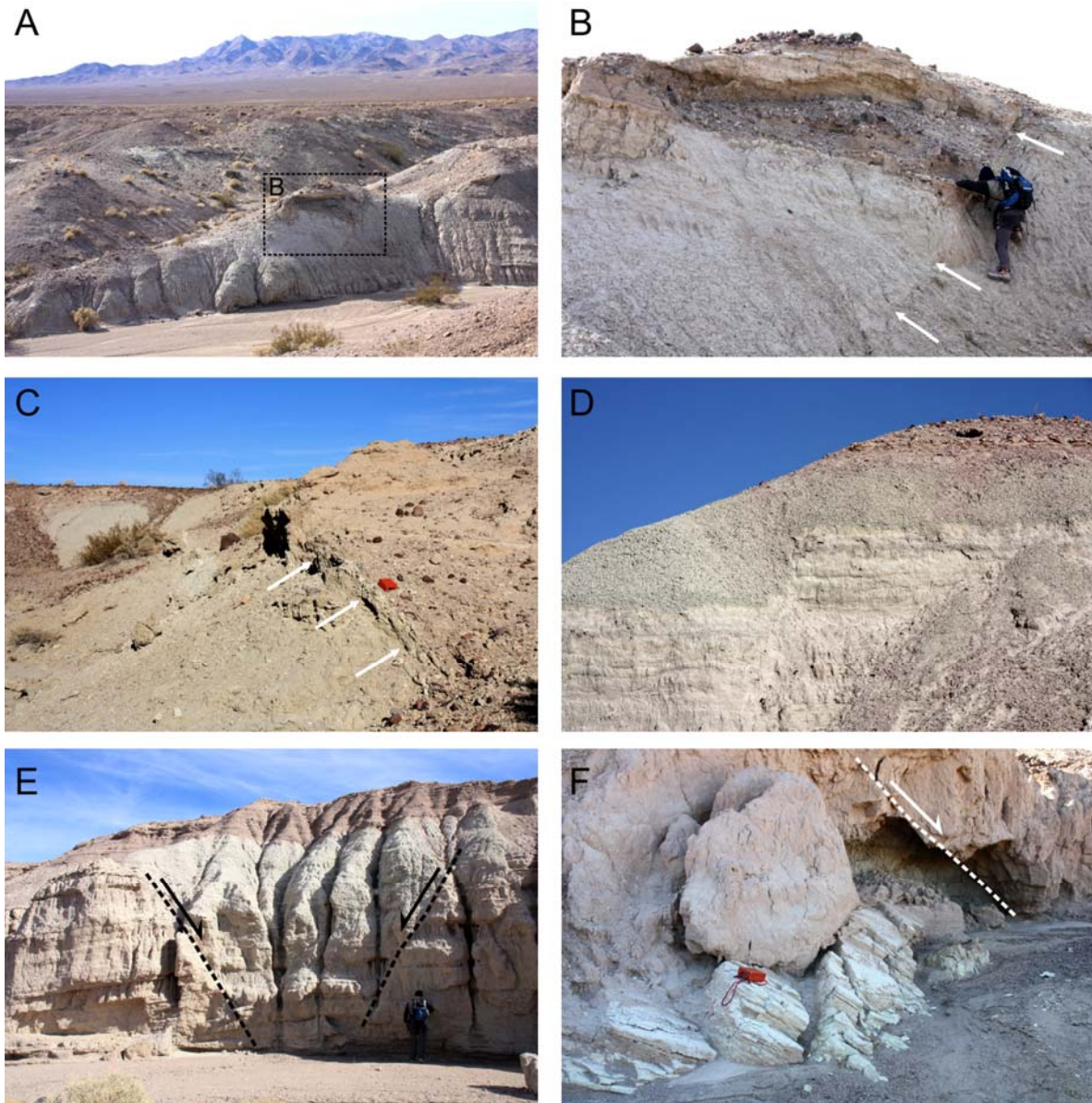


Figure DR2. Extensional features identified at the head zone. A. Listric normal fault. Square dashed line indicates location of figure 2B. B. Detail of the extensional fault of figure 2A. White arrows indicate the fault trace. C. Scar at the head zone indicated by white arrows; the hanging wall is located to the right of the scar. D. Normal fault with a metric throw. E. Graben formed by conjugate faults with metric throw. F. Antithetic (dashed white line) and synthetic normal faults deforming Lava Creek ash bed.

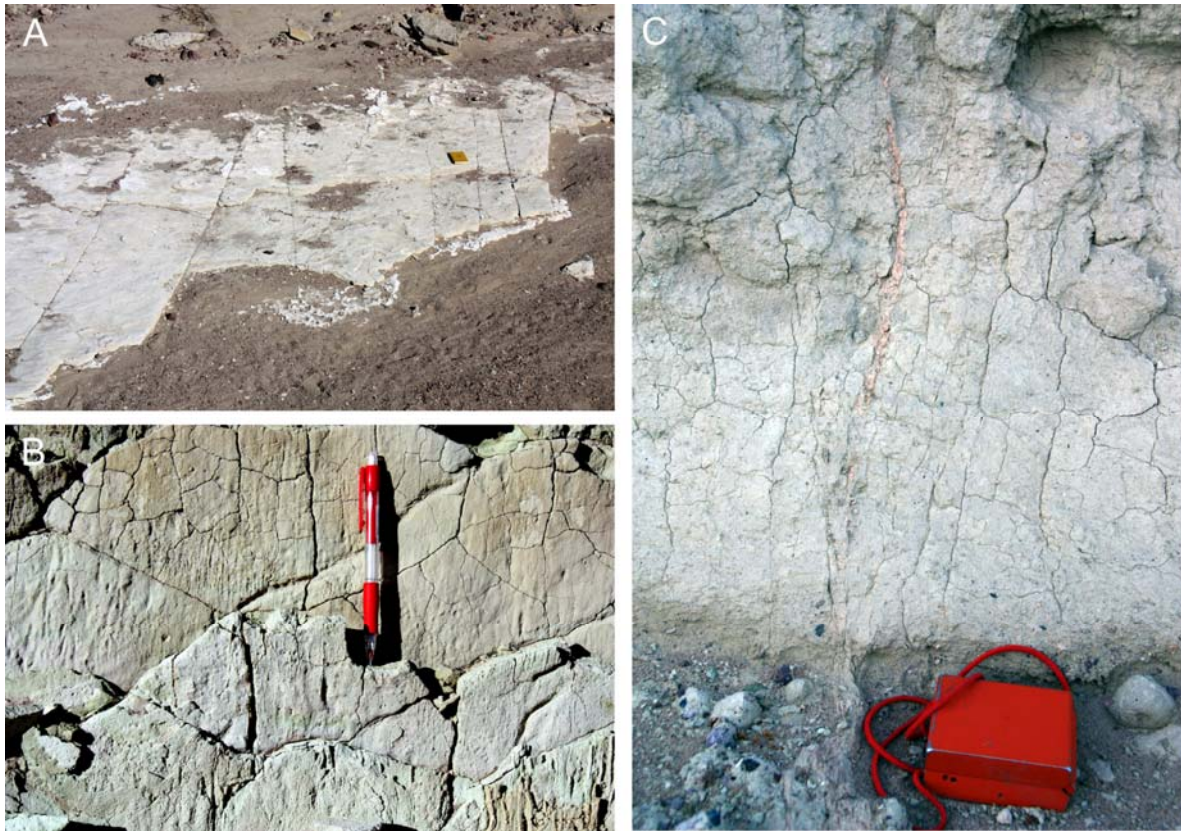


Figure DR3. Some kinematic indicators of the transport direction. A. Extensional joint set at the top of the Lava Creek ash bed. B. Striations in the Lava Creek ash bed, probably produced by shear stresses into the slumped body. C. Injection dyke, where red silt is fludized into white and grey lacustrine sediments.