

SUPPLEMENTAL MATERIALS

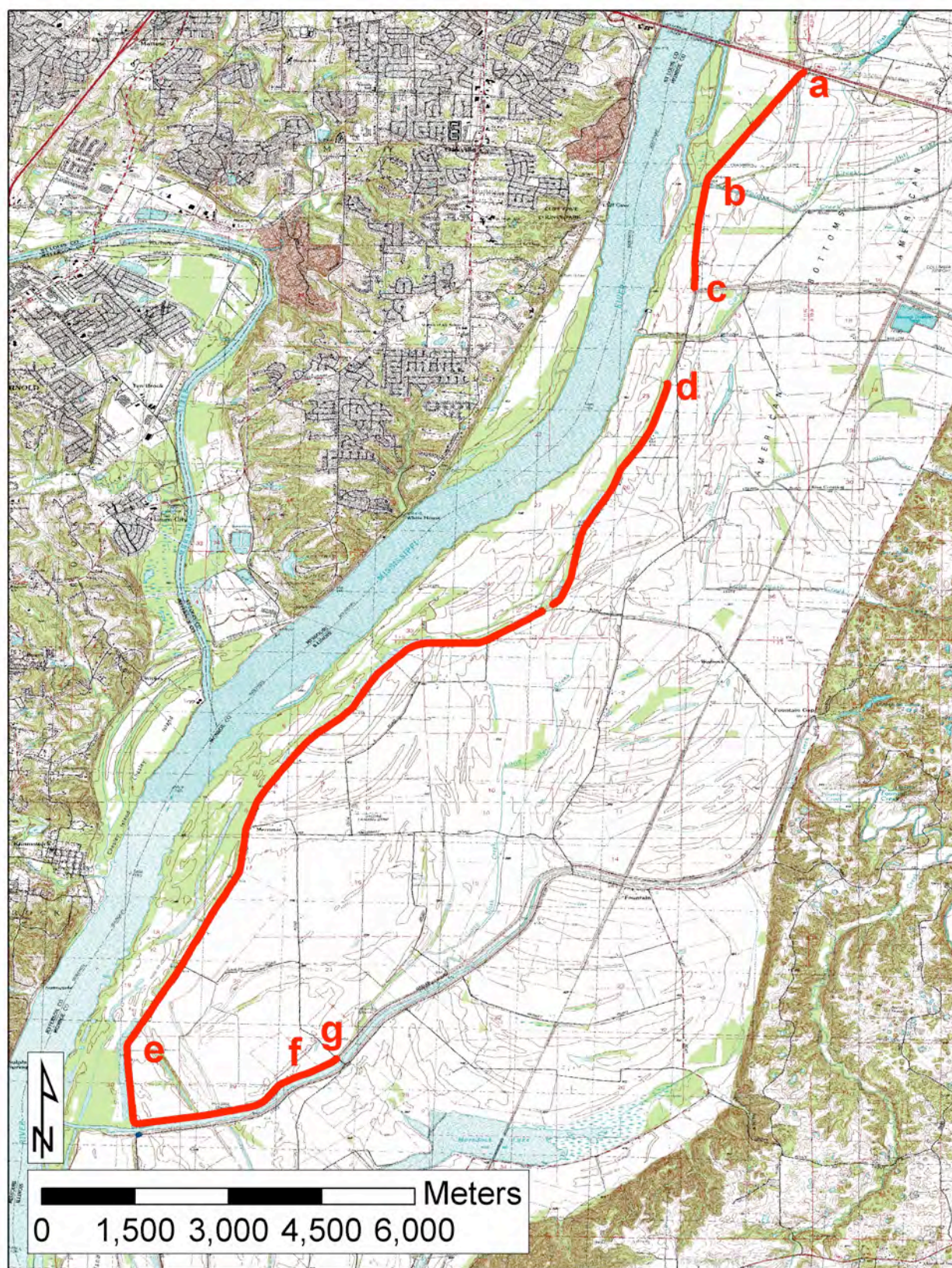


Fig. DR1. Location map for the Valmeyer N survey unit.

Valmeyer North Levee Elevations

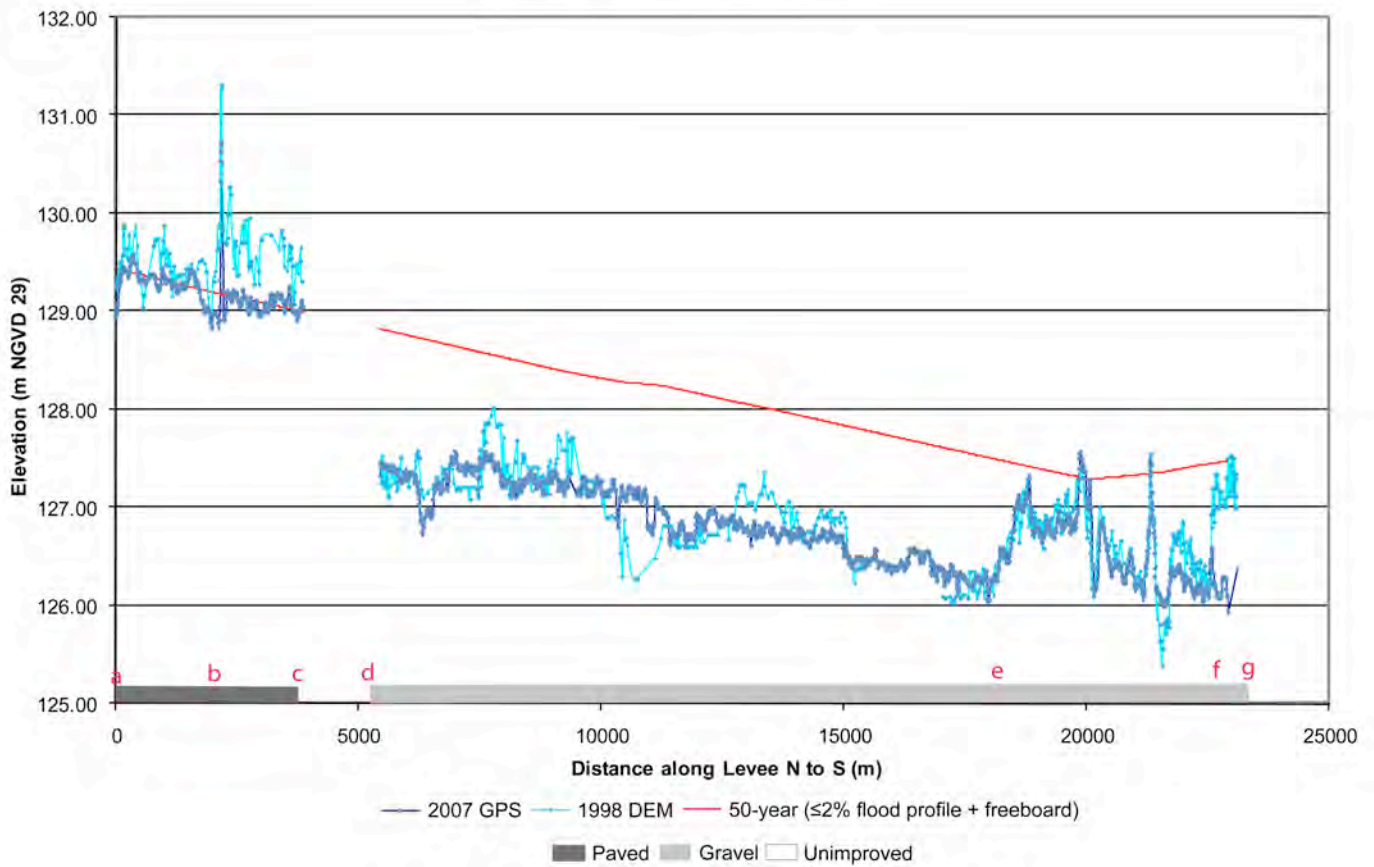


Fig. DR2. Elevation profiles for 1998 levee crest (light blue) and 2007 (dark blue) for the Valmeyer N survey unit. Approximate profile of 50-year flood profile plus freeboard is shown in red for reference.

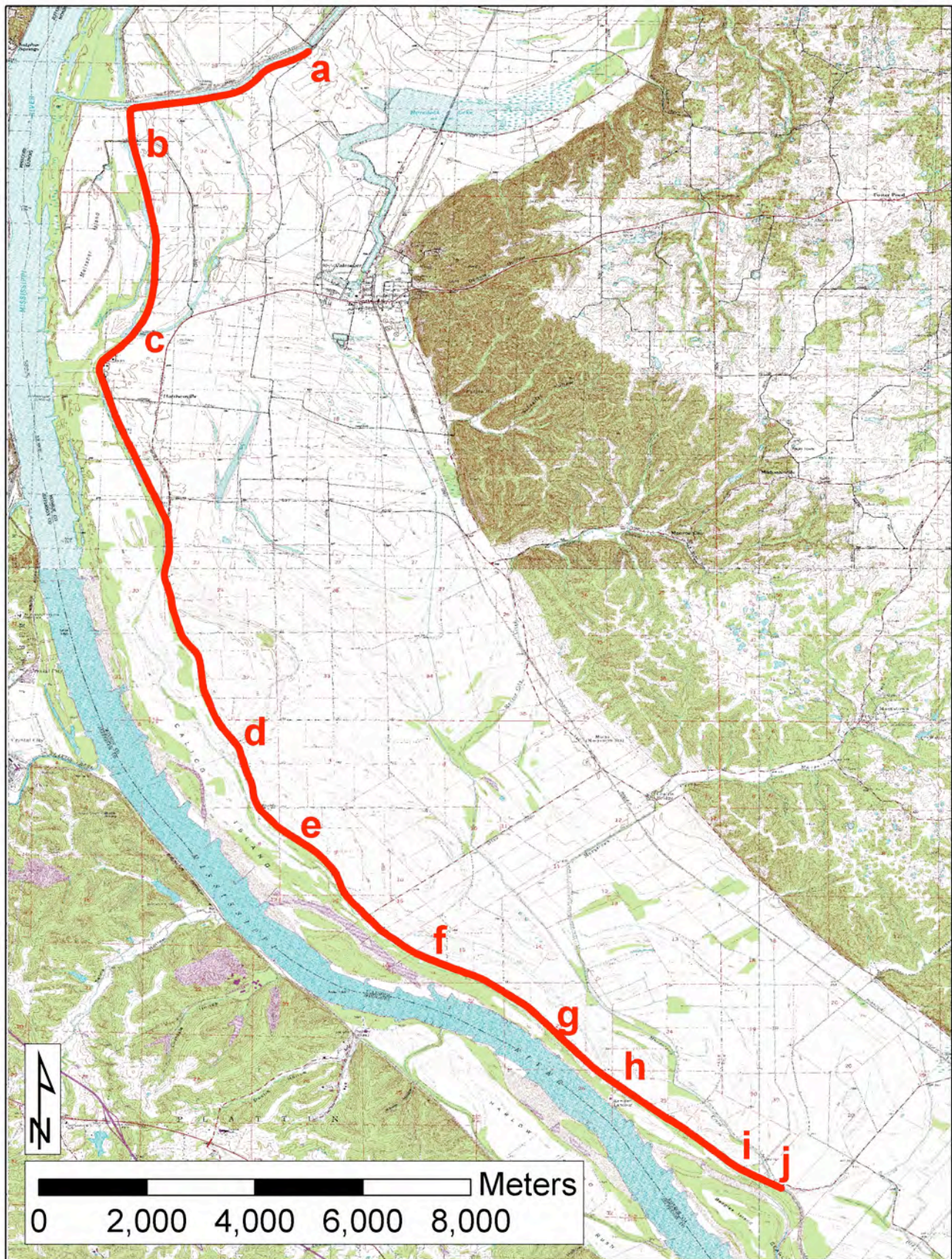


Fig. DR3. Location map for the Valmeyer S survey unit.

Valmeyer South Levee Elevations



Fig. DR4. Elevation profiles for 1998 levee crest (light blue) and 2007 (dark blue) for the Valmeyer S survey unit. Approximate profile of 50-year flood profile plus freeboard is shown in red for reference.

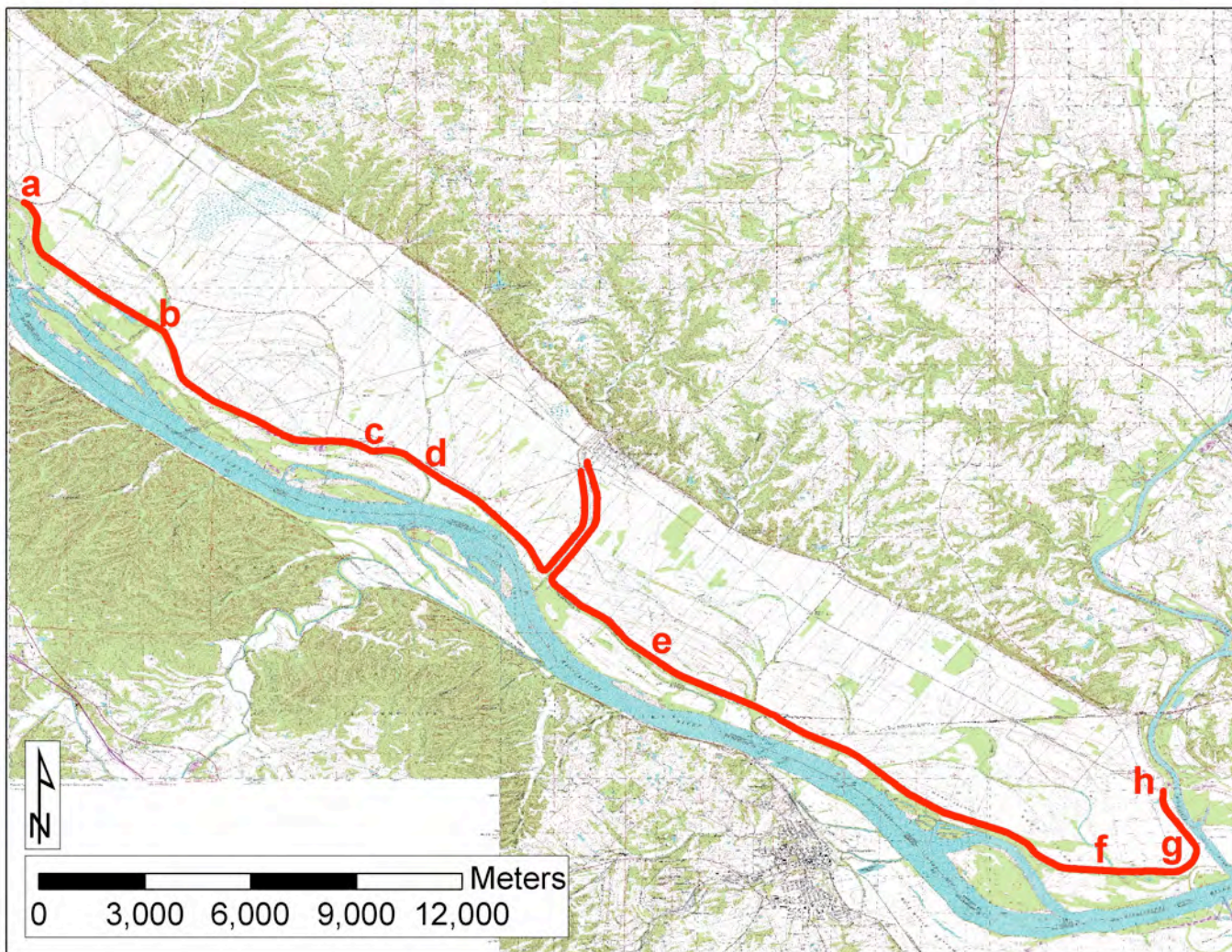


Fig. DR5. Location map for the Modoc survey unit.

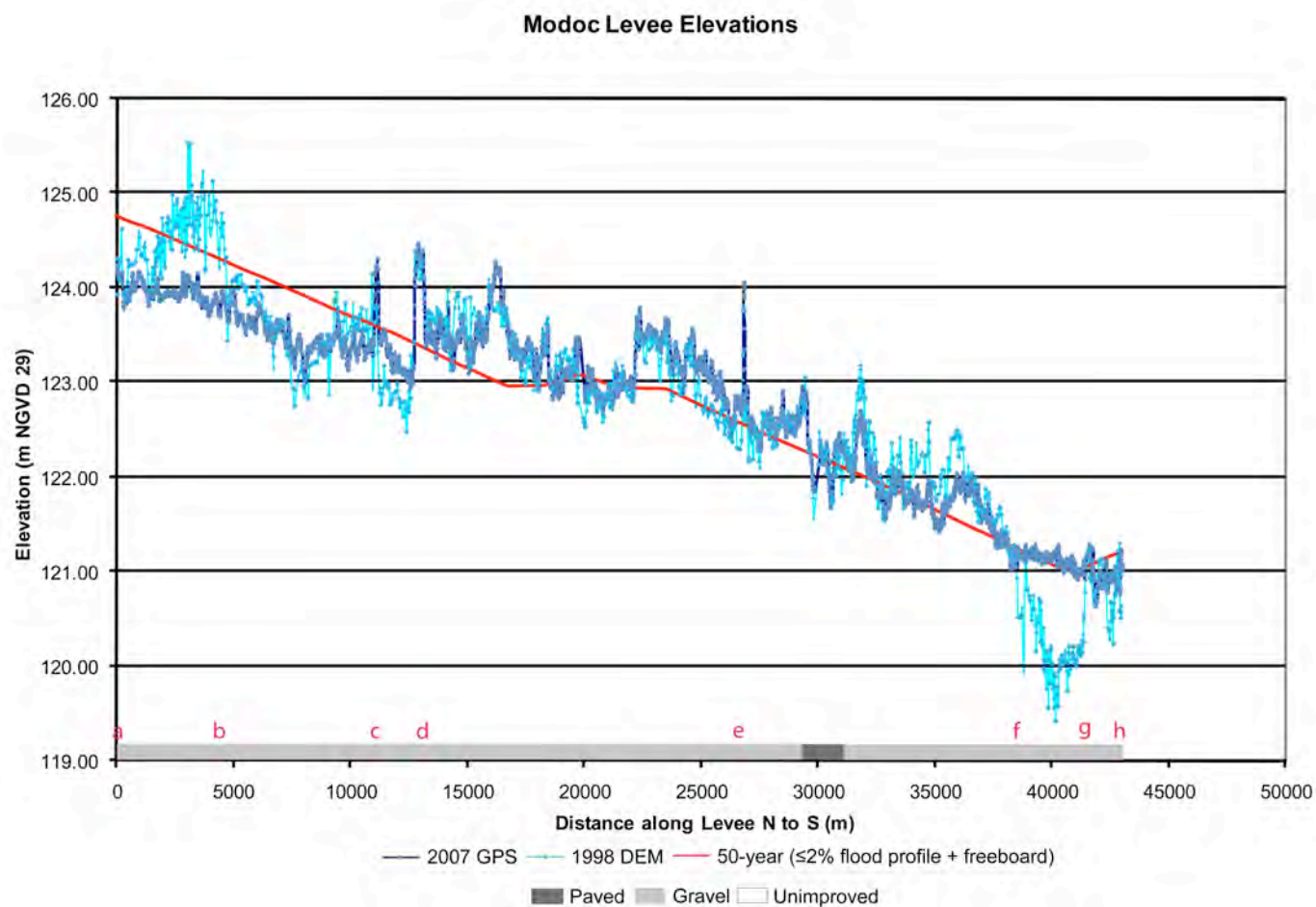


Fig. DR6. Elevation profiles for 1998 levee crest (light blue) and 2007 (dark blue) for the Modoc survey unit. Approximate profile of 50-year flood profile plus freeboard is shown in red for reference.

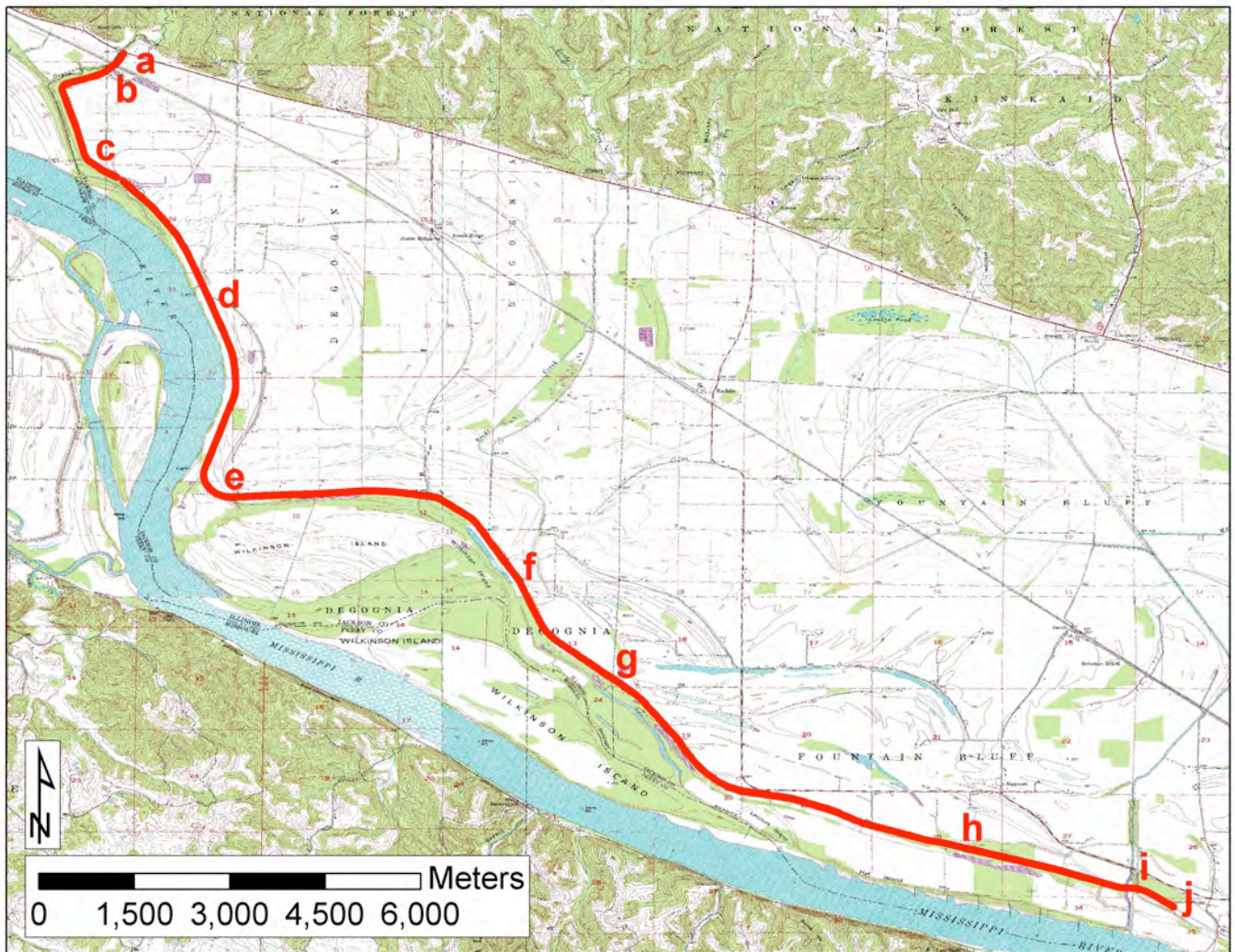


Fig. DR7. Location map for the Grand Tower N survey unit.

Grand Tower North Levee Elevations

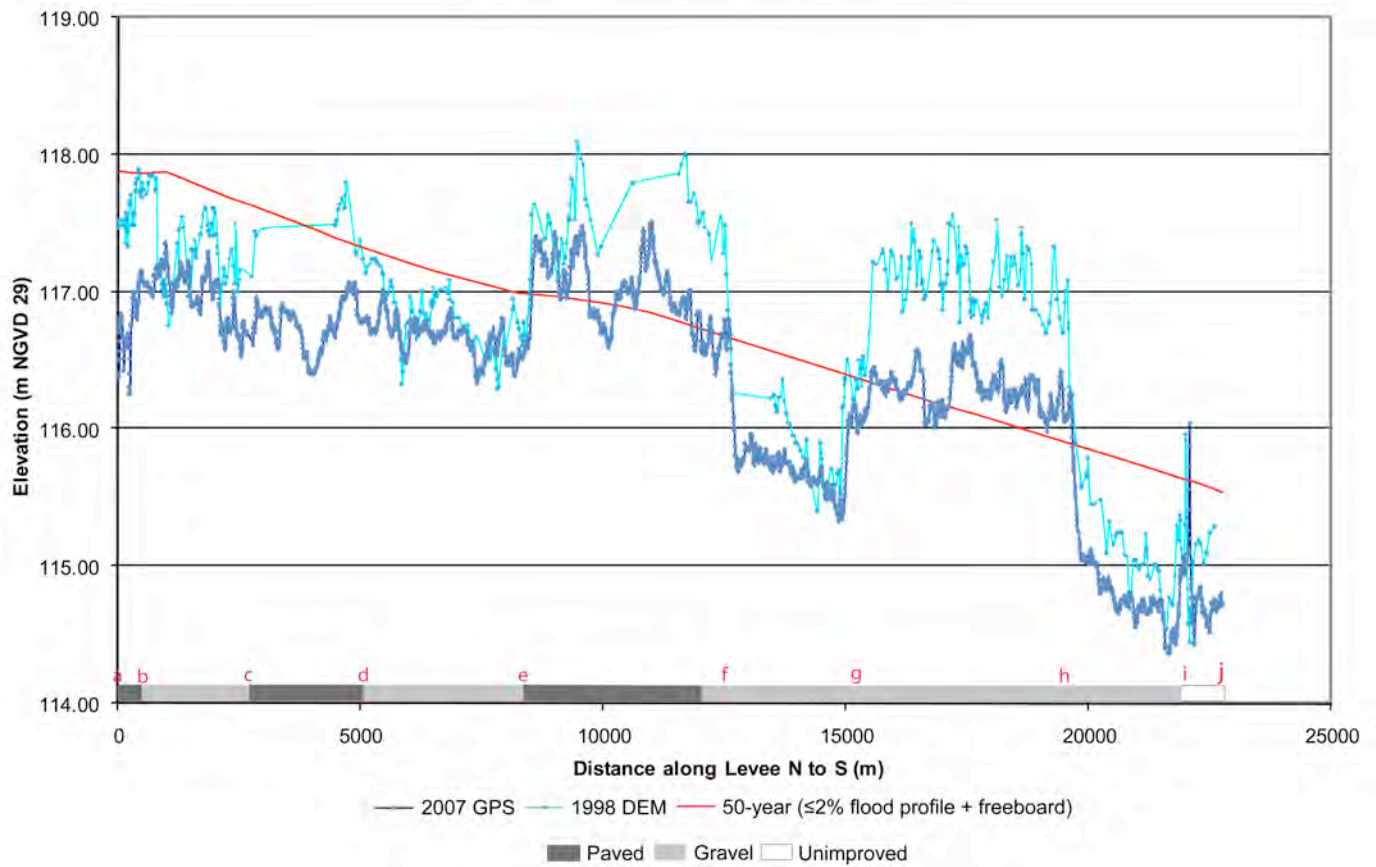


Fig. DR8. Elevation profiles for 1998 levee crest (light blue) and 2007 (dark blue) for the Grand Tower N survey unit. Approximate profile of 50-year flood profile plus freeboard is shown in red for reference.

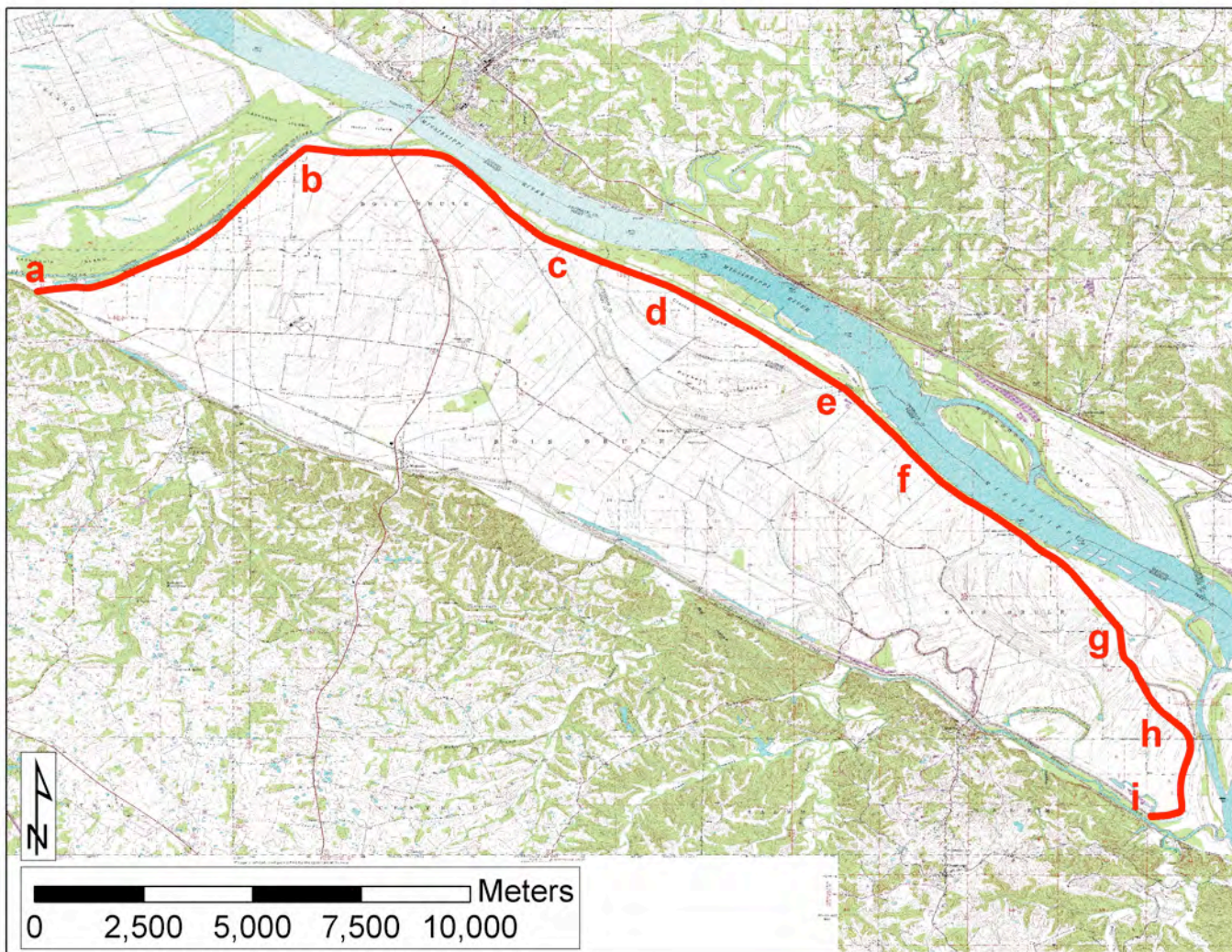


Fig. DR9. Location map for the Chester E survey unit.

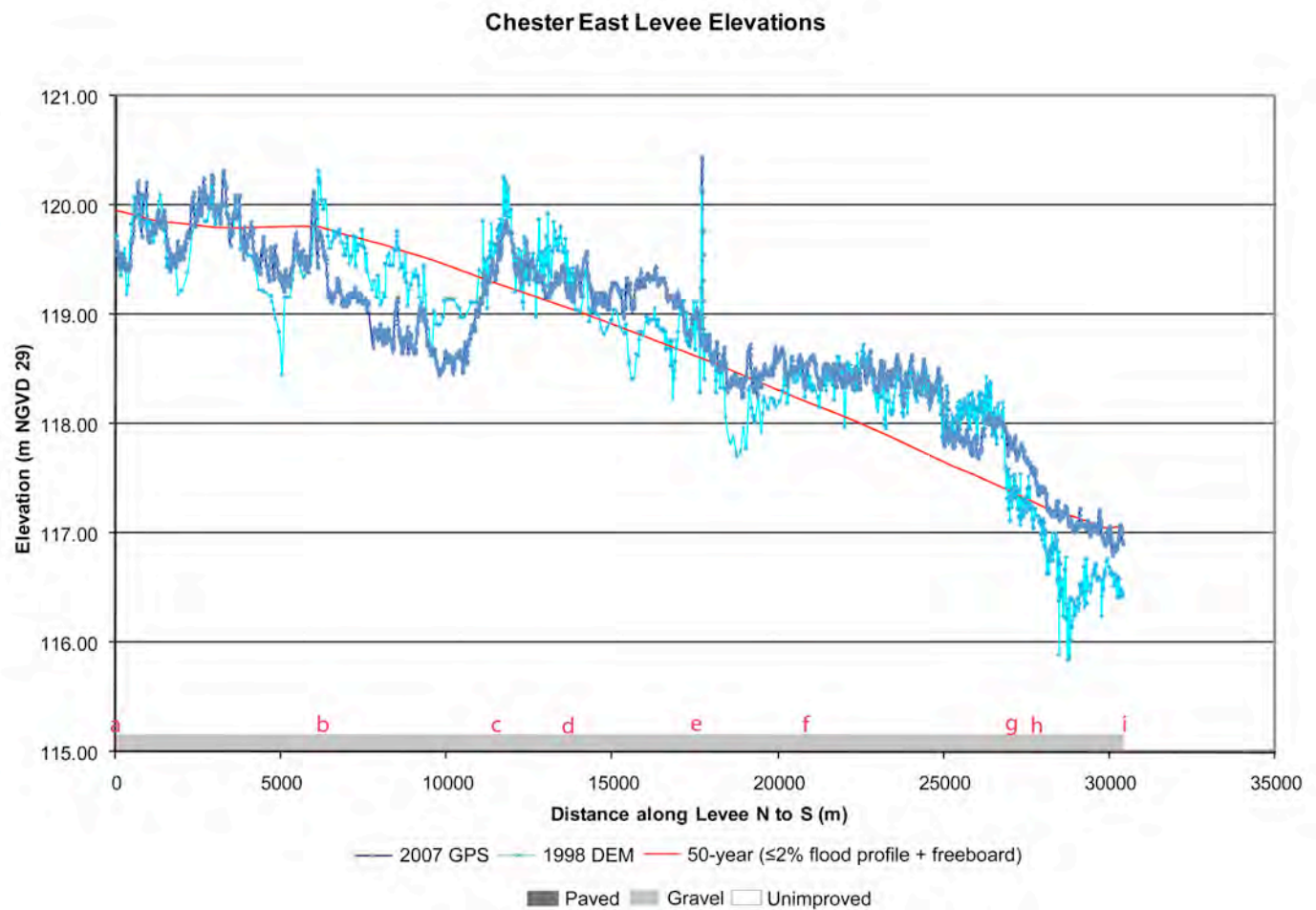


Fig. DR10. Elevation profiles for 1998 levee crest (light blue) and 2007 (dark blue) for the Chester E survey unit. Approximate profile of 50-year flood profile plus freeboard is shown in red for reference.

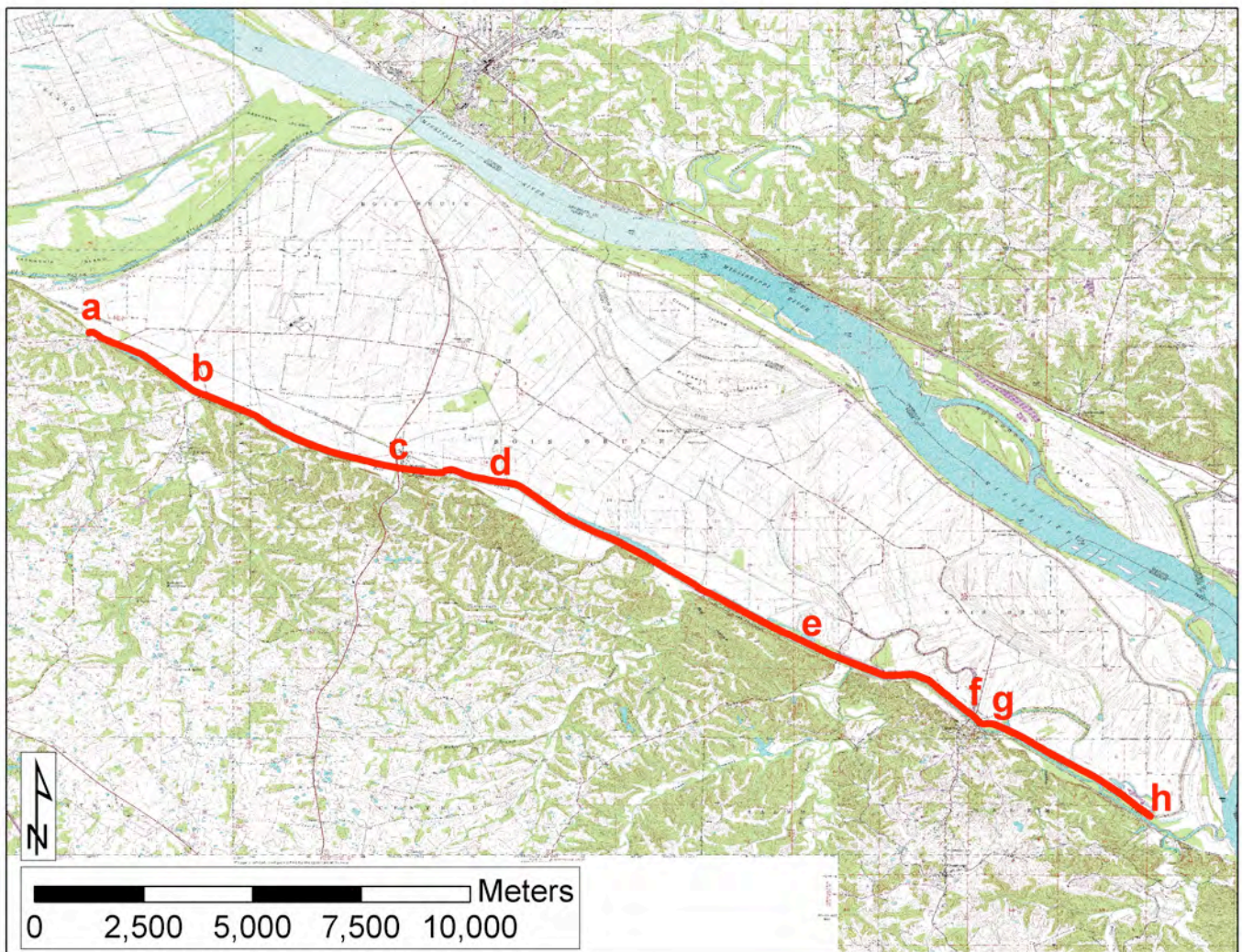


Fig. DR11. Location map for the Chester W survey unit.

Chester West Levee Elevations

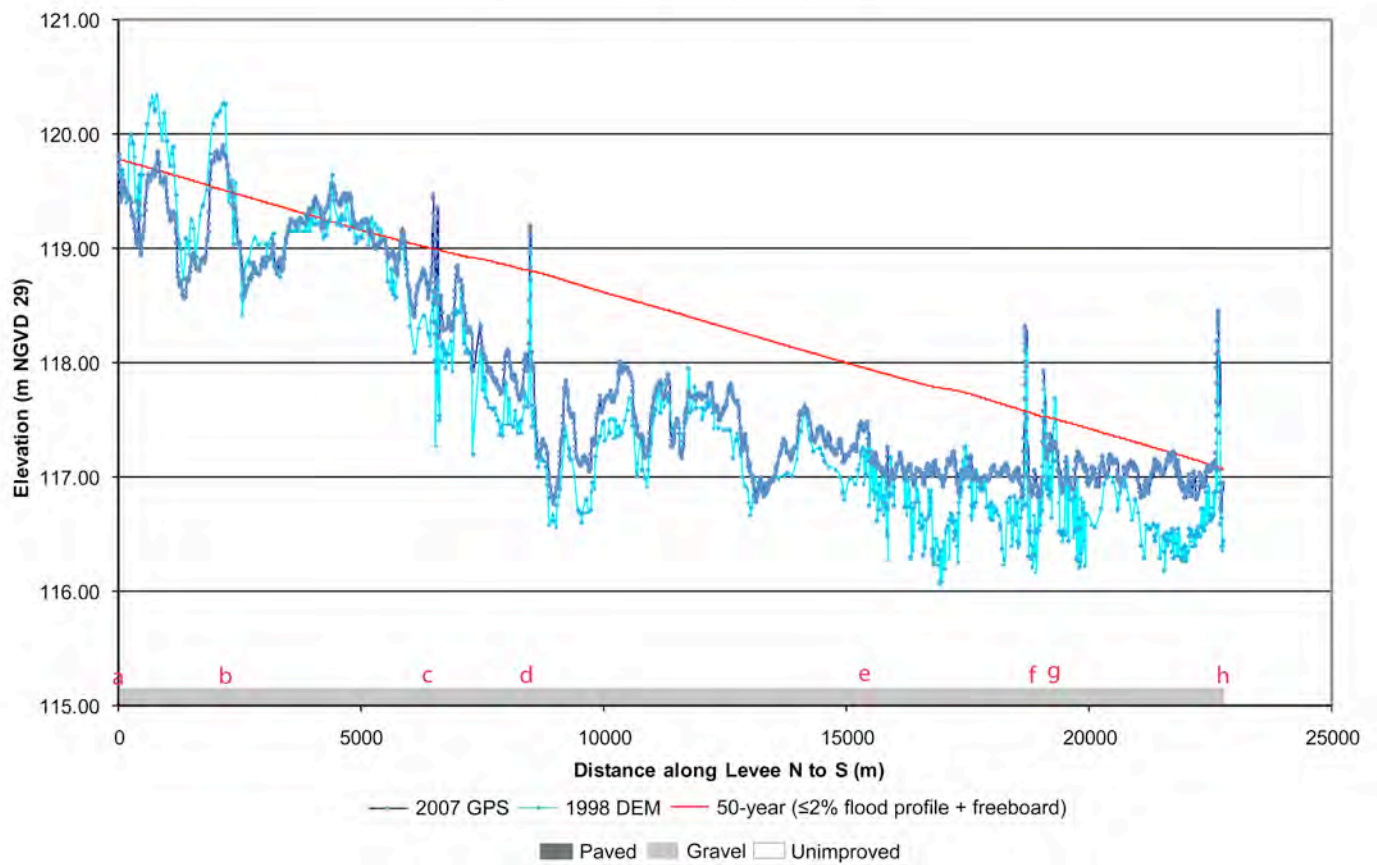


Fig. DR12. Elevation profiles for 1998 levee crest (light blue) and 2007 (dark blue) for the Chester E survey unit. Approximate profile of 50-year flood profile plus freeboard is shown in red for reference.

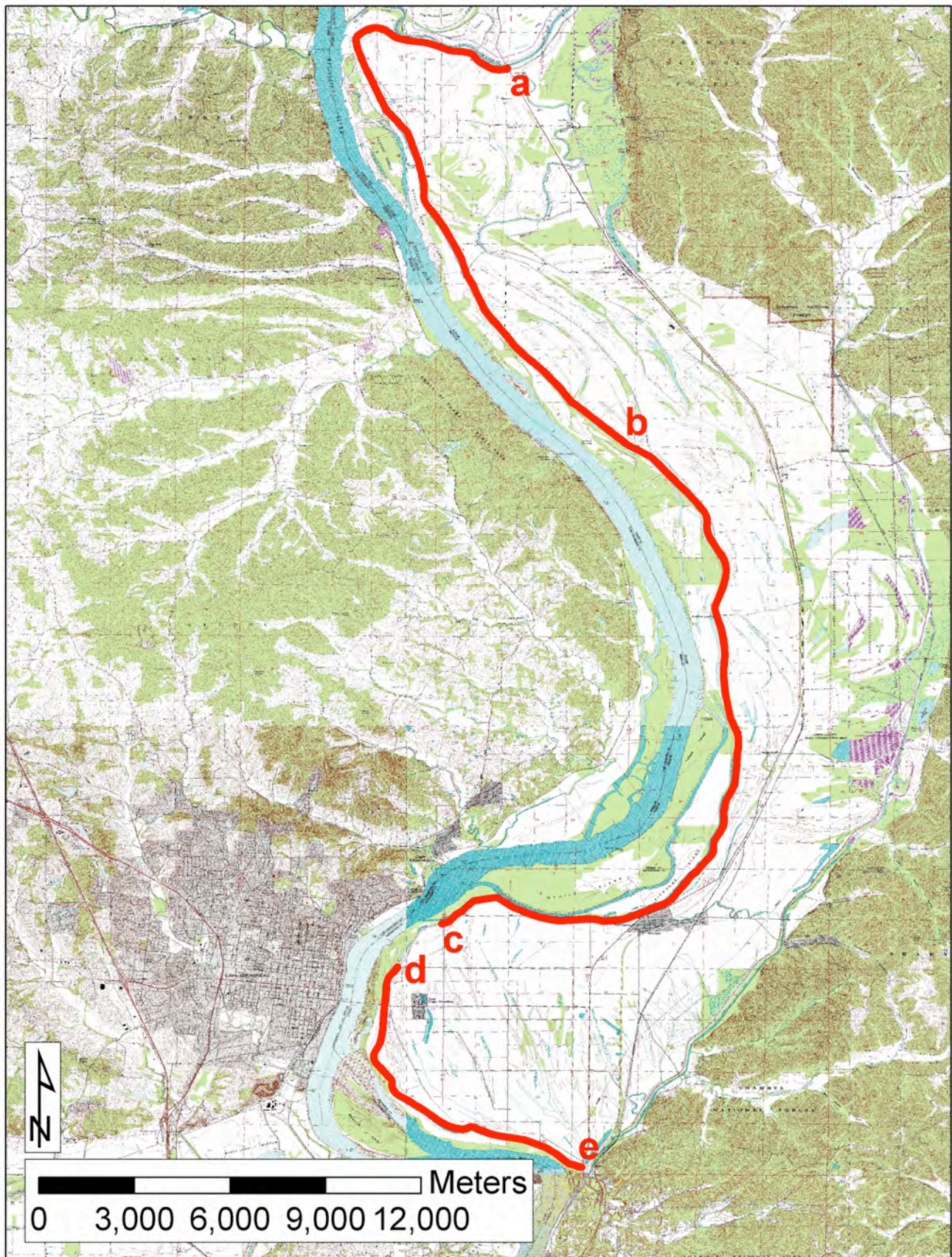


Fig. DR13 . Location map for the Wolf Lake survey unit.

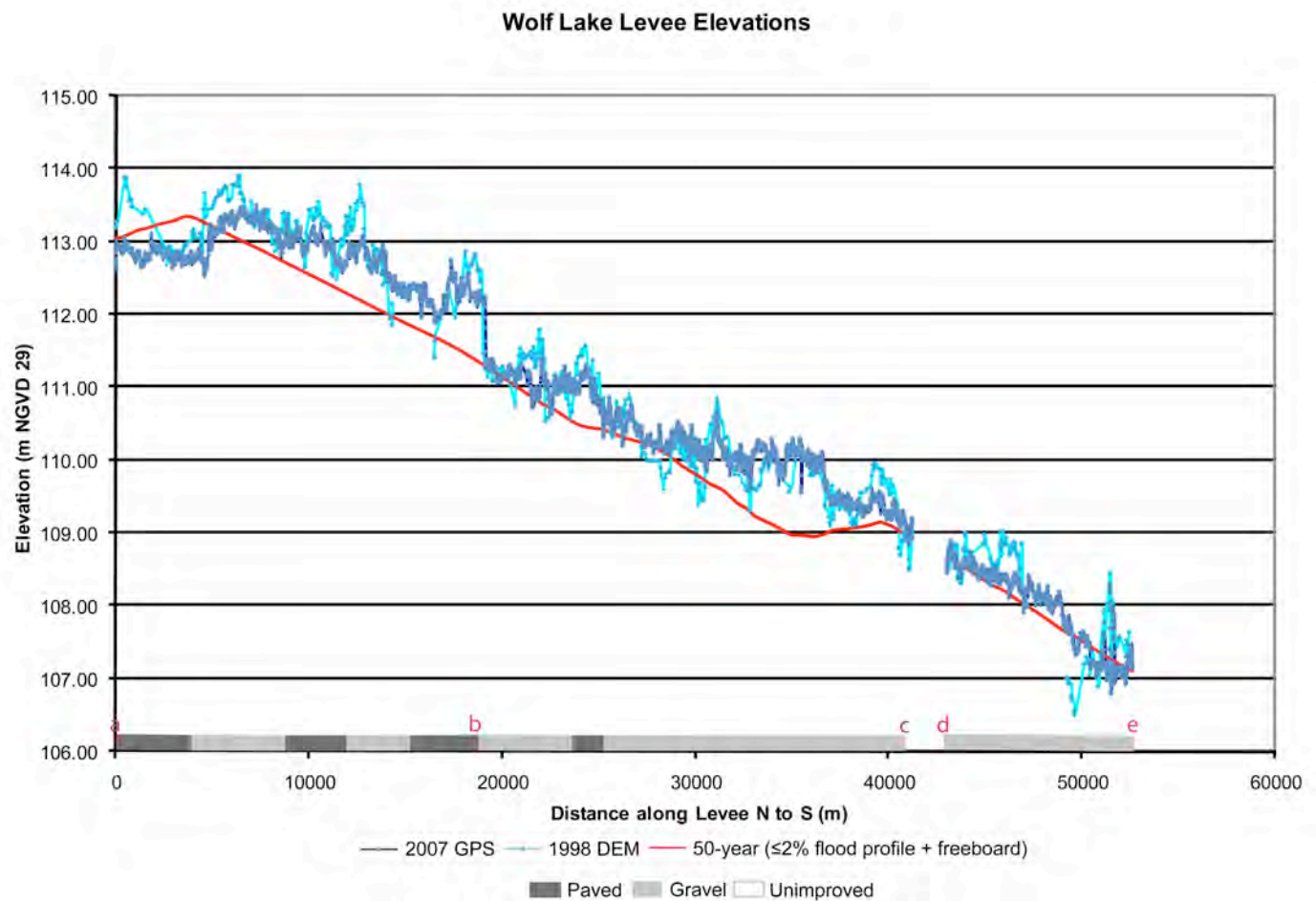


Fig. DR14. Elevation profiles for 1998 levee crest (light blue) and 2007 (dark blue) for the Wolf Lake survey unit. Approximate profile of 50-year flood profile plus freeboard is shown in red for reference.

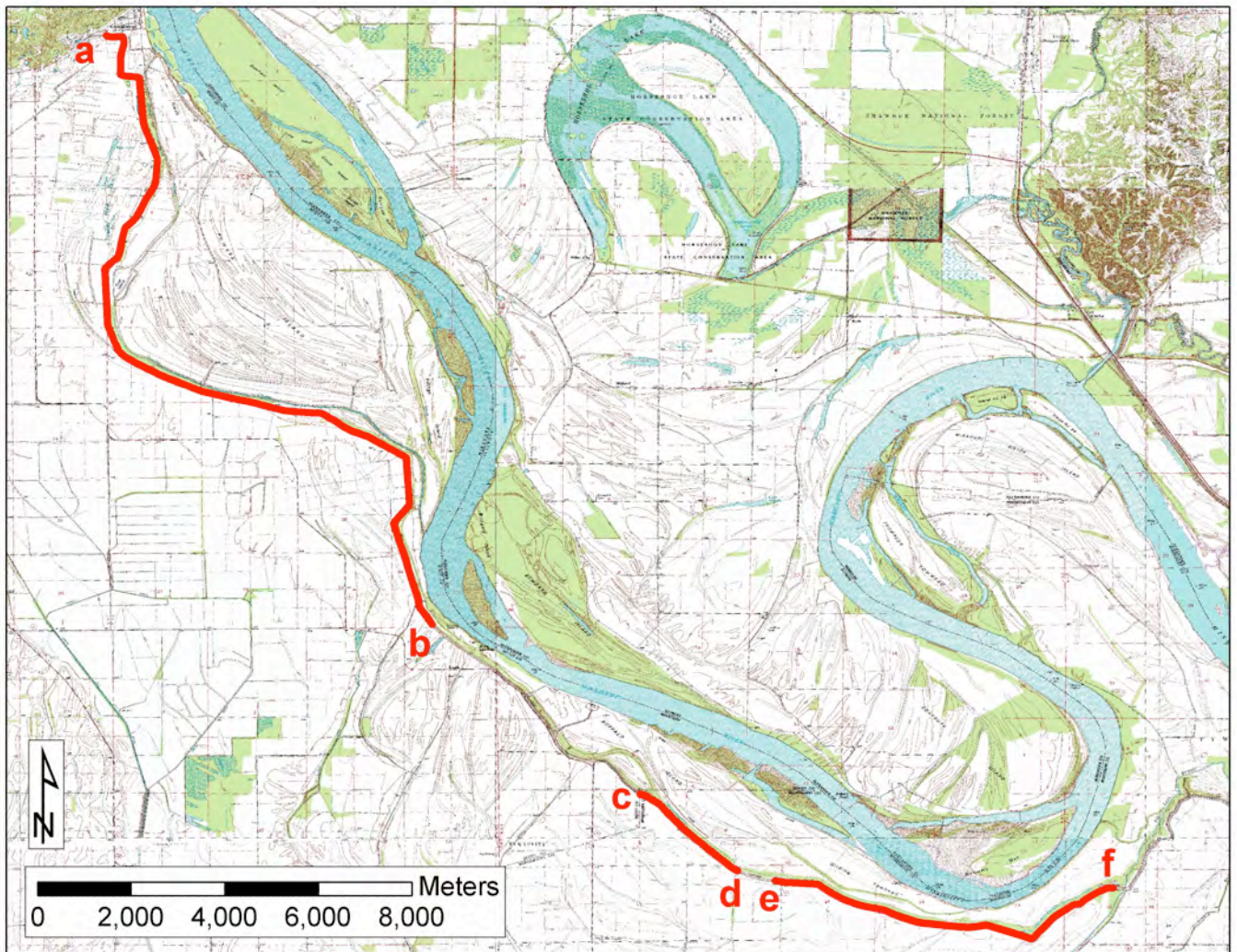


Fig. DR15 . Location map for the Commerce survey unit.

Commerce Levee Elevations



Fig. DR16. Elevation profiles for 1998 levee crest (light blue) and 2007 (dark blue) for the Commerce survey unit. Approximate profile of 50-year flood profile plus freeboard is shown in red for reference.

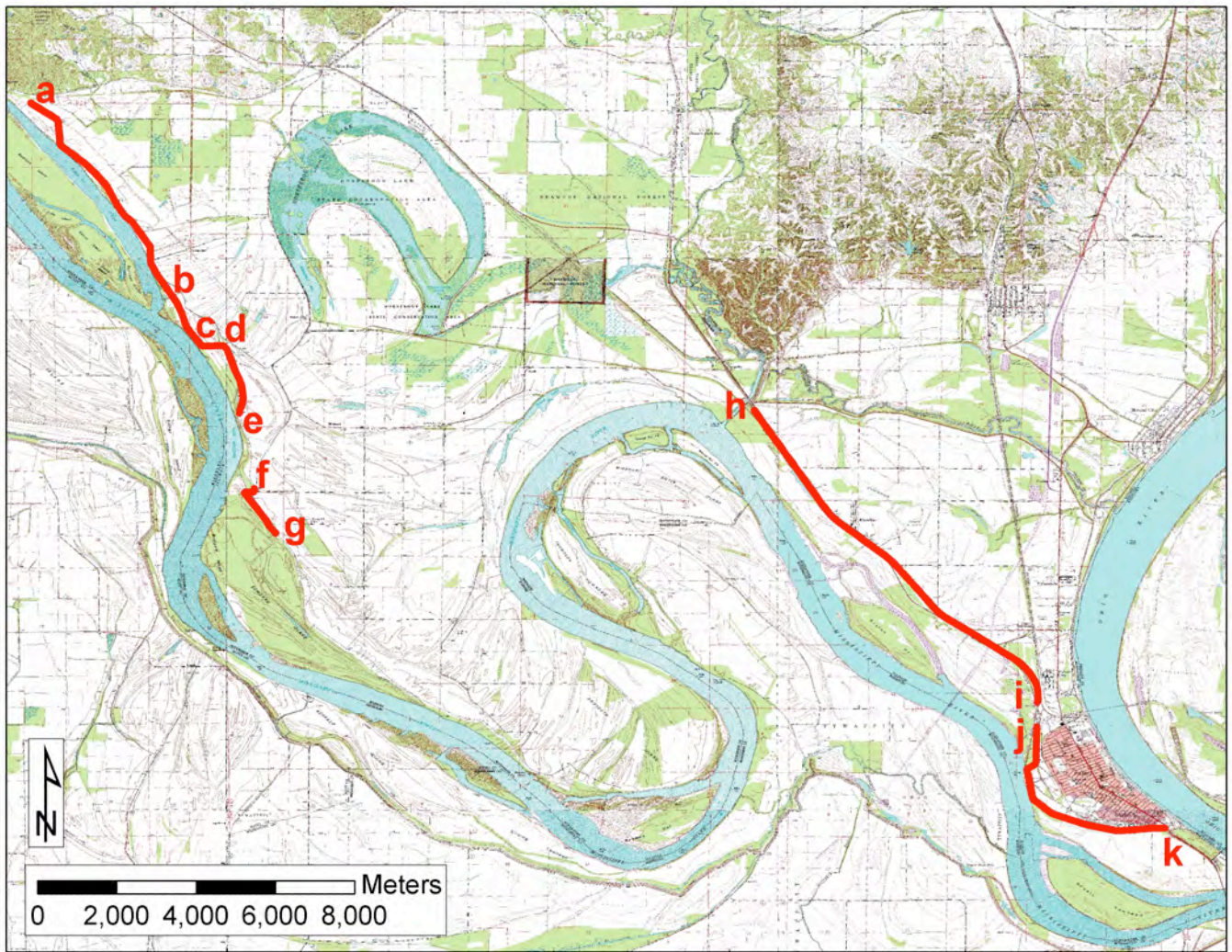


Fig. DR17 . Location map for the Cairo survey unit.

Cairo Levee Elevations

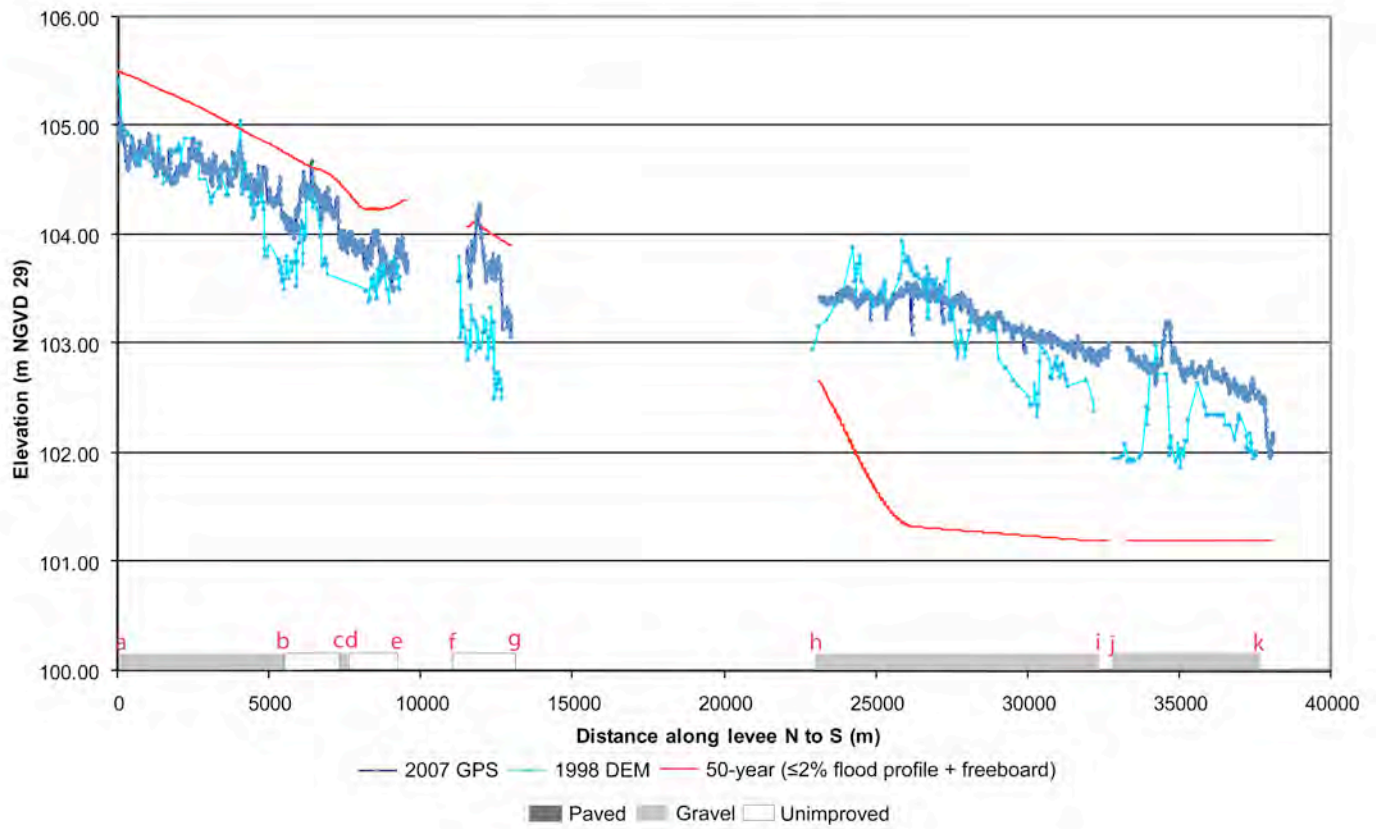


Fig. DR18. Elevation profiles for 1998 levee crest (light blue) and 2007 (dark blue) for the Cairo survey unit. Approximate profile of 50-year flood profile plus freeboard is shown in red for reference.