

Data Repository Items

Figure DR1. Enlarged image and drawing of a four-cell embryo (illustrated as Fig. 1D, E in the text) from the Kaili Lagerstätte.

Figure DR2. Enlarged image and drawing of an eight-cell embryo (illustrated as Fig. 1F, G in the text) from the Kaili Lagerstätte.

Figure DR3. Blatt's diagram on relationships between pH and solubilities of amorphous silica (in orange) and calcite (in blue) in seawater at 20°C. Putative egg clusters from the Kaili Lagerstätte mainly formed under phase I diagenetic conditions, where amorphous silica precipitates and calcite dissolves. Abbreviations: –, dissolution; +, precipitation.

Reference

Blatt, H., 1992, Sedimentary petrology, 2nd Ed.: New York, W. H. Freeman and Company, 514 p.

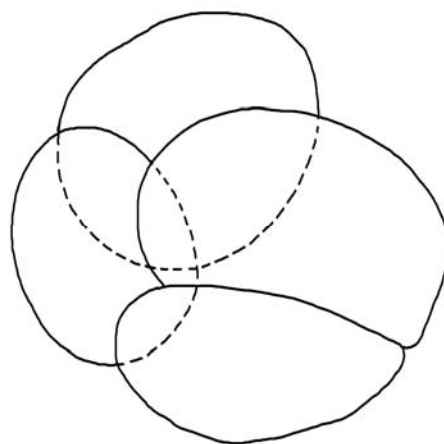
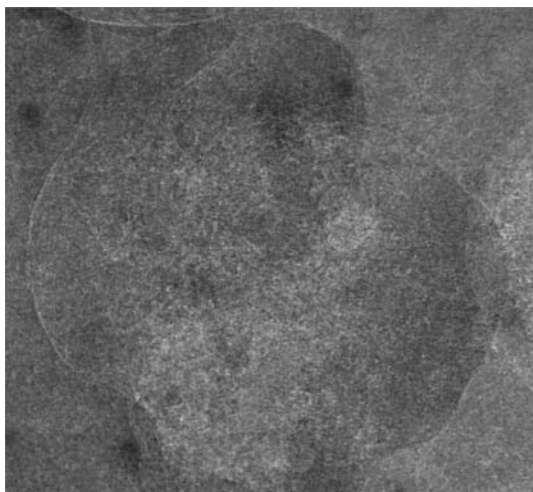


Fig. DR1.

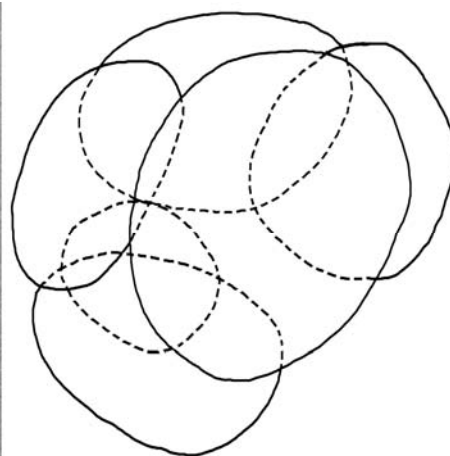
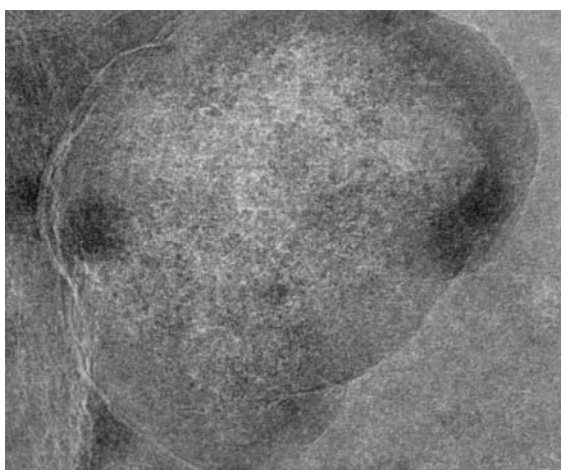
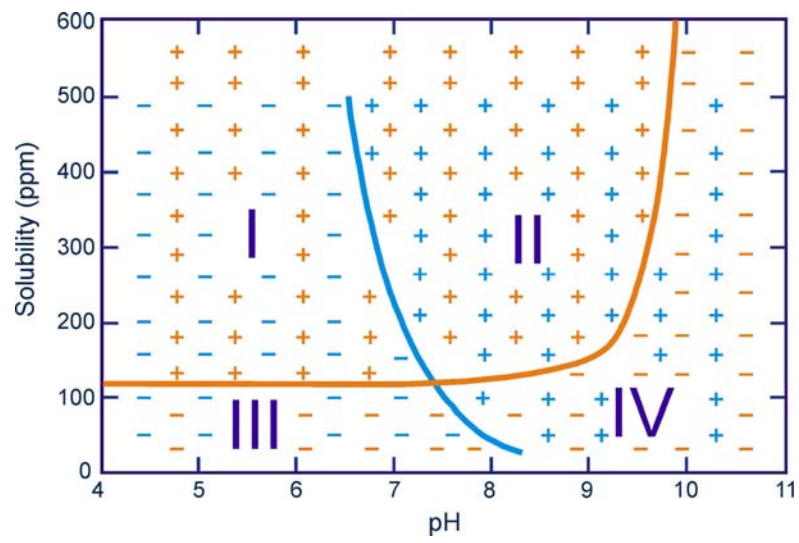


Fig. DR2.

**Fig. DR3.**