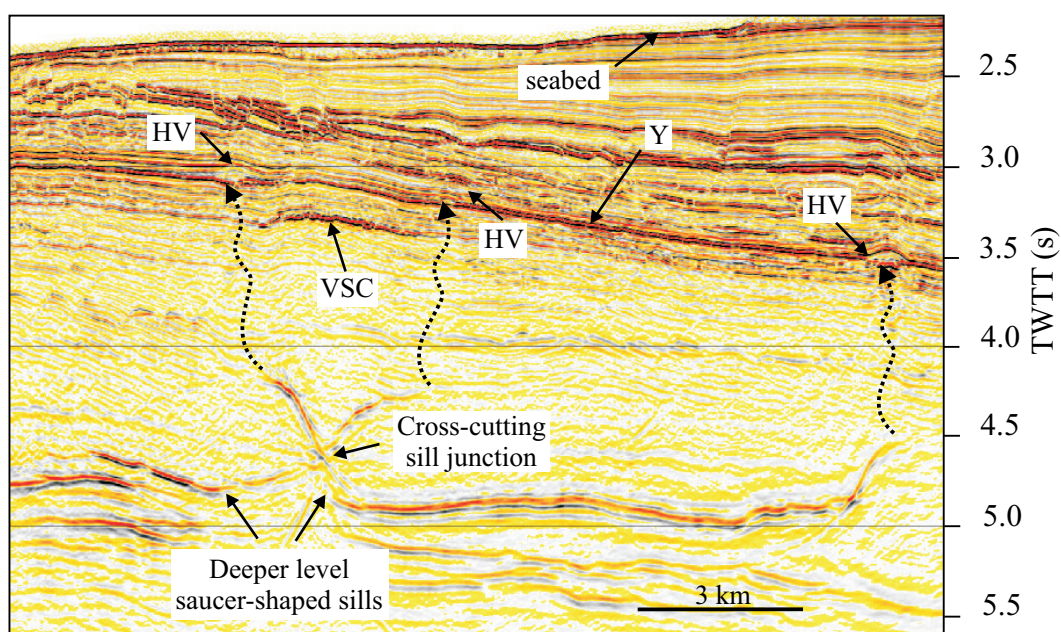


## Supplement 1

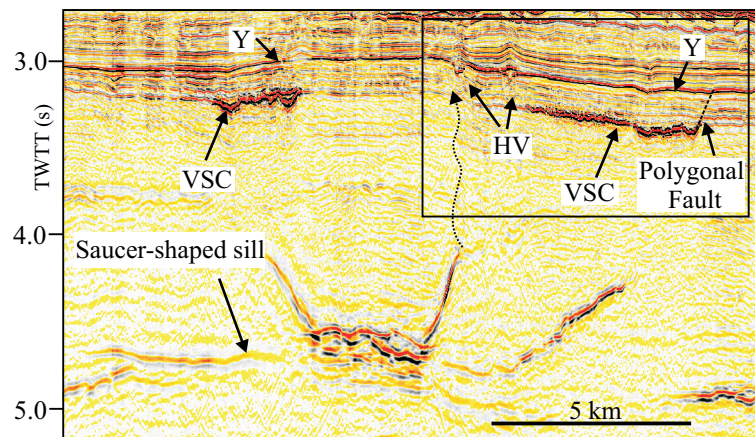


Author Name: Andrew Miles

Figure No.: Supplement\_1

File Extension: Supplement\_figure1.pdf

2-D seismic section with two deeper-level saucer-shaped sills at 5 s TWTT. Hydrothermal mounds denote the position of the paleoseabed and are generally associated with the highest point of each sill wing. The higher-level hybrid flow sill is present at a depth of 3.5 s TWTT. Abbreviations are those of Figure 2.



Author Name: Andrew Miles

Figure No.: Supplement\_2

File Extension: Supplement2\_figure.pdf

2-D seismic section showing two segments of the VSC in addition to deeper level saucer-shaped sills and hydrothermal vents at horizon Y. The boxed area marks the location of figure 3 with two prominent hydrothermal vents, one of which is associated with a deeper, saucer-shaped sill, as suggested by the dotted arrow.