

Fig. DR1 Uninterpreted version of seismic section from the Solsikke 3D seismic survey (Area A) used in Fig. 2.

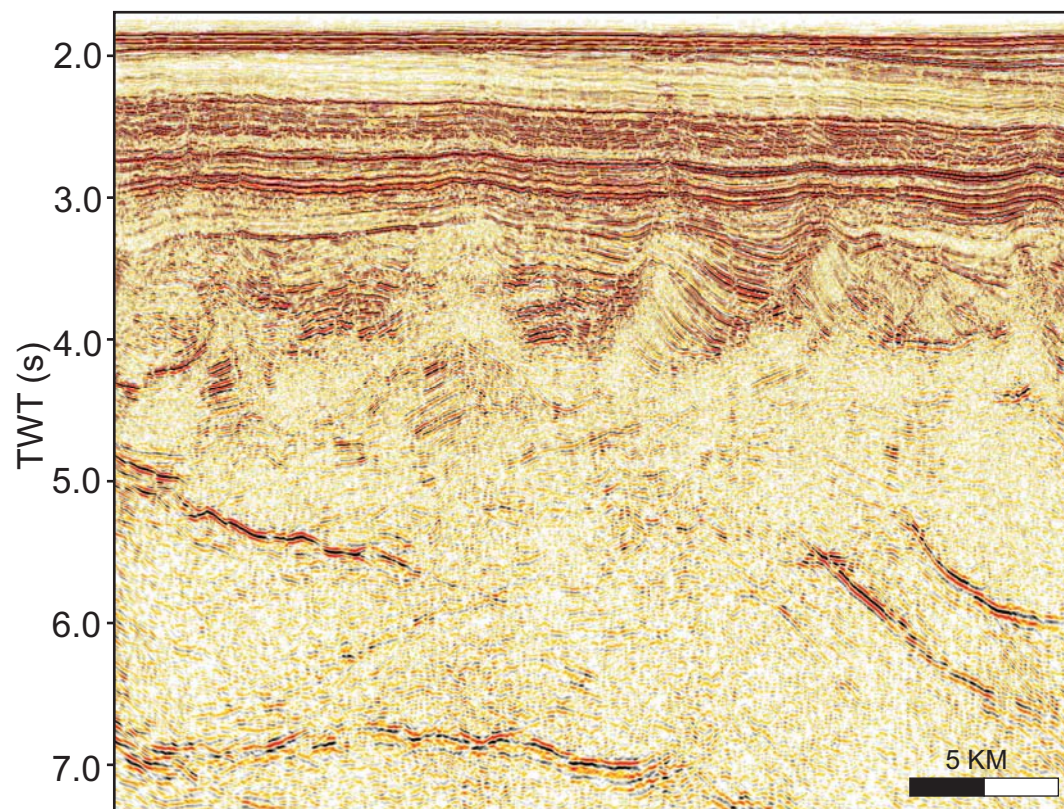


Fig. DR2 Uninterpreted version of seismic section from the Gjallar 3D seismic survey (Area B) used in Fig. 3.

2006208

Data Repository Item

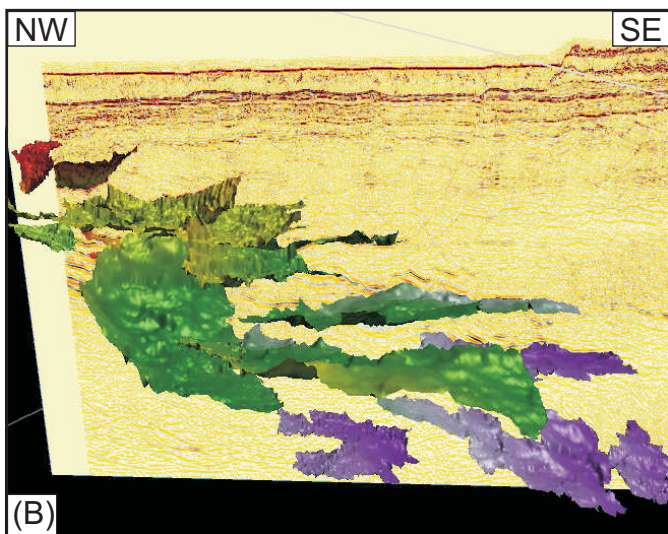
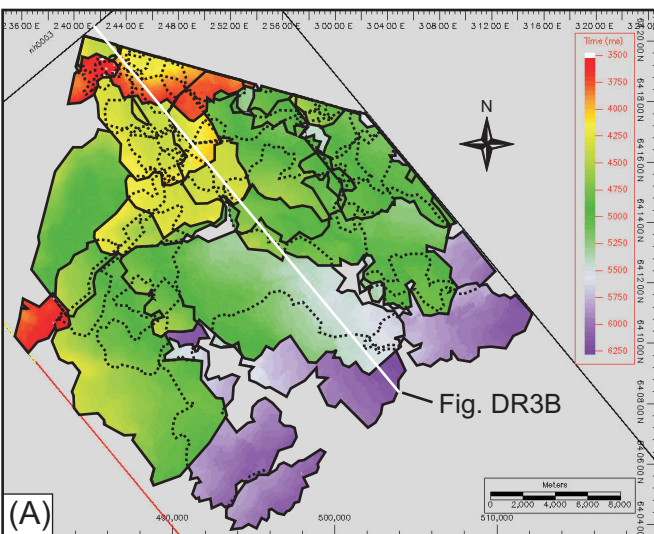


Fig. DR3 The Solsikke sill complex (Area A). (A) Mapview projection of time-structure maps of 33 igneous sills mapped from the Solsikke 3D seismic survey. Red shows shallow and purple deep levels of emplacement. The outline of deeper sills is dotted where these underlie shallower sills. (B) 3D-visualisation showing NW-SE seismic section and mapped sills. The sills are highly interconnected and intrude at increasingly shallow depths towards the north-west.