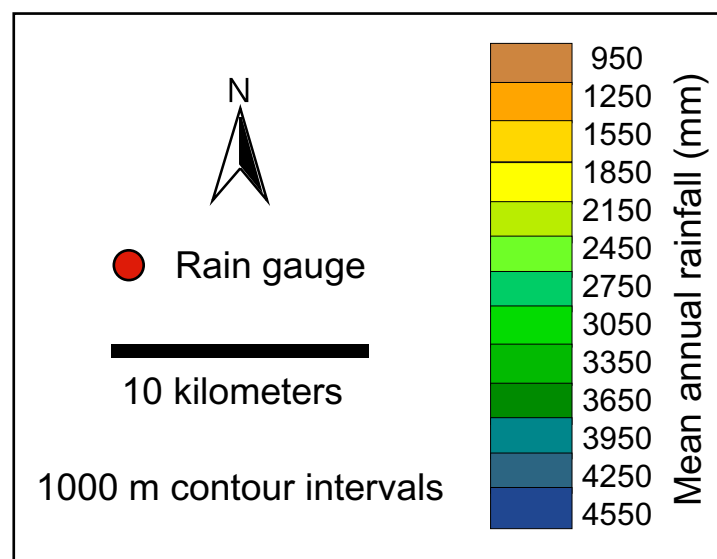
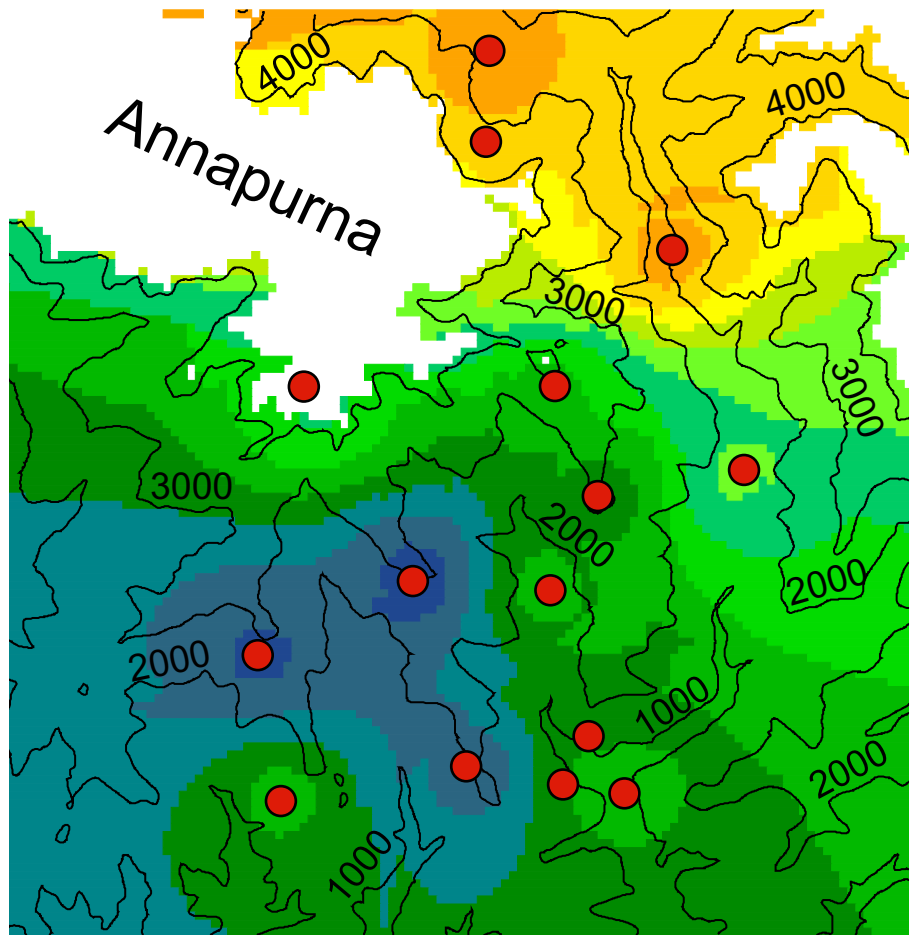


Data Repository Item  
Figure DR1



DR2004101

Figure DR1. Map of interpolated rainfall zones with topographic contour lines. Rainfall along ridges closest to eastern border of field site may be underestimated. Valleys in region are typically drier than ridges (Barros et al., 2004), and estimated rainfall along these particular ridges is strongly controlled by rainfall data from weather stations in valley to west. Region to east of field area, however, is generally drier than area shown here, suggesting that underestimation of rainfall may not be severe.

REFERENCE CITED

Barros, A.P., Kim, G., Williams, E., and Nesbitt, S.W., 2004, Probing orographic controls in the Himalayas during the monsoon using satellite imagery: *Natural Hazards and Earth System Sciences*, v. 4, p. 1–23.