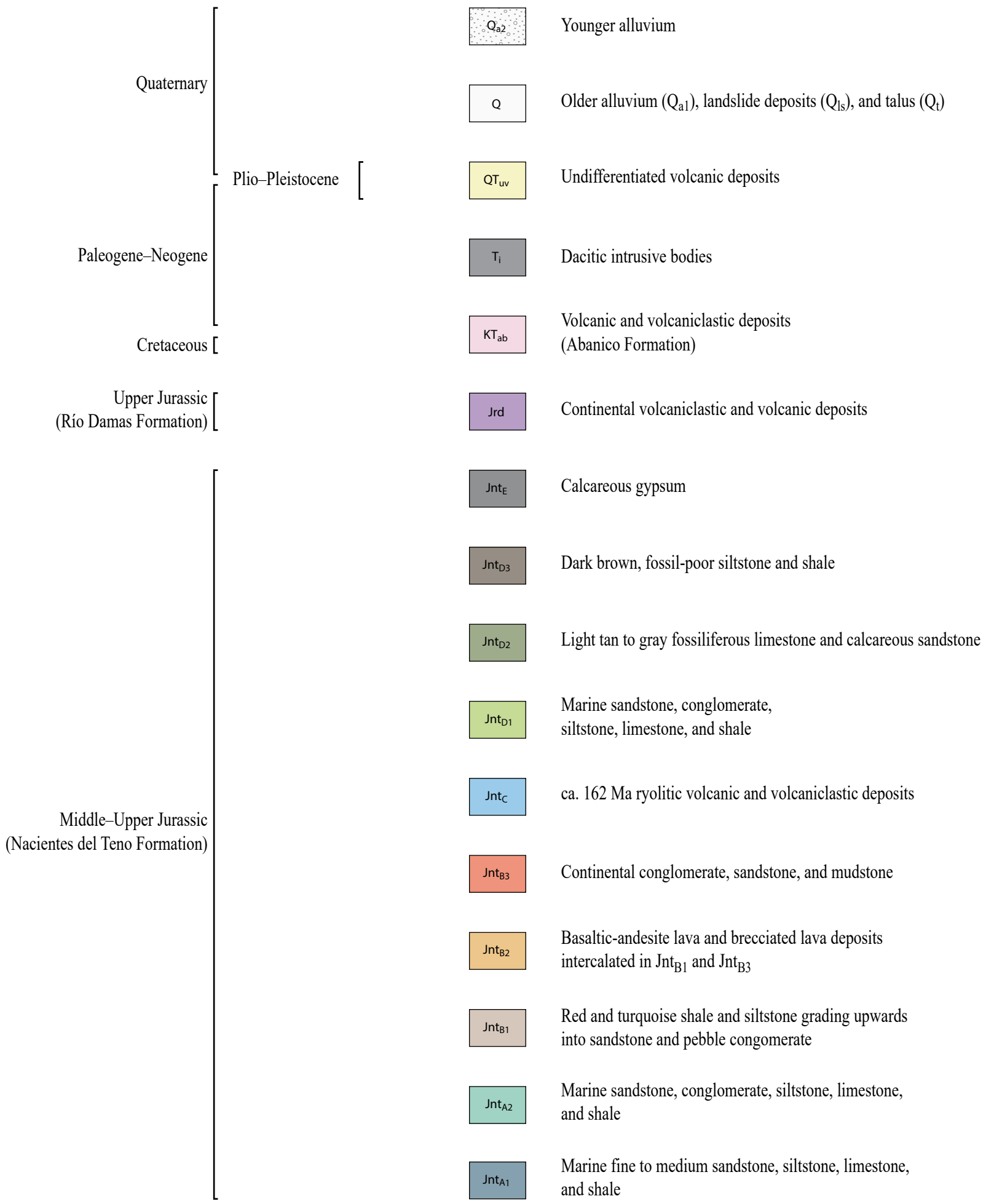
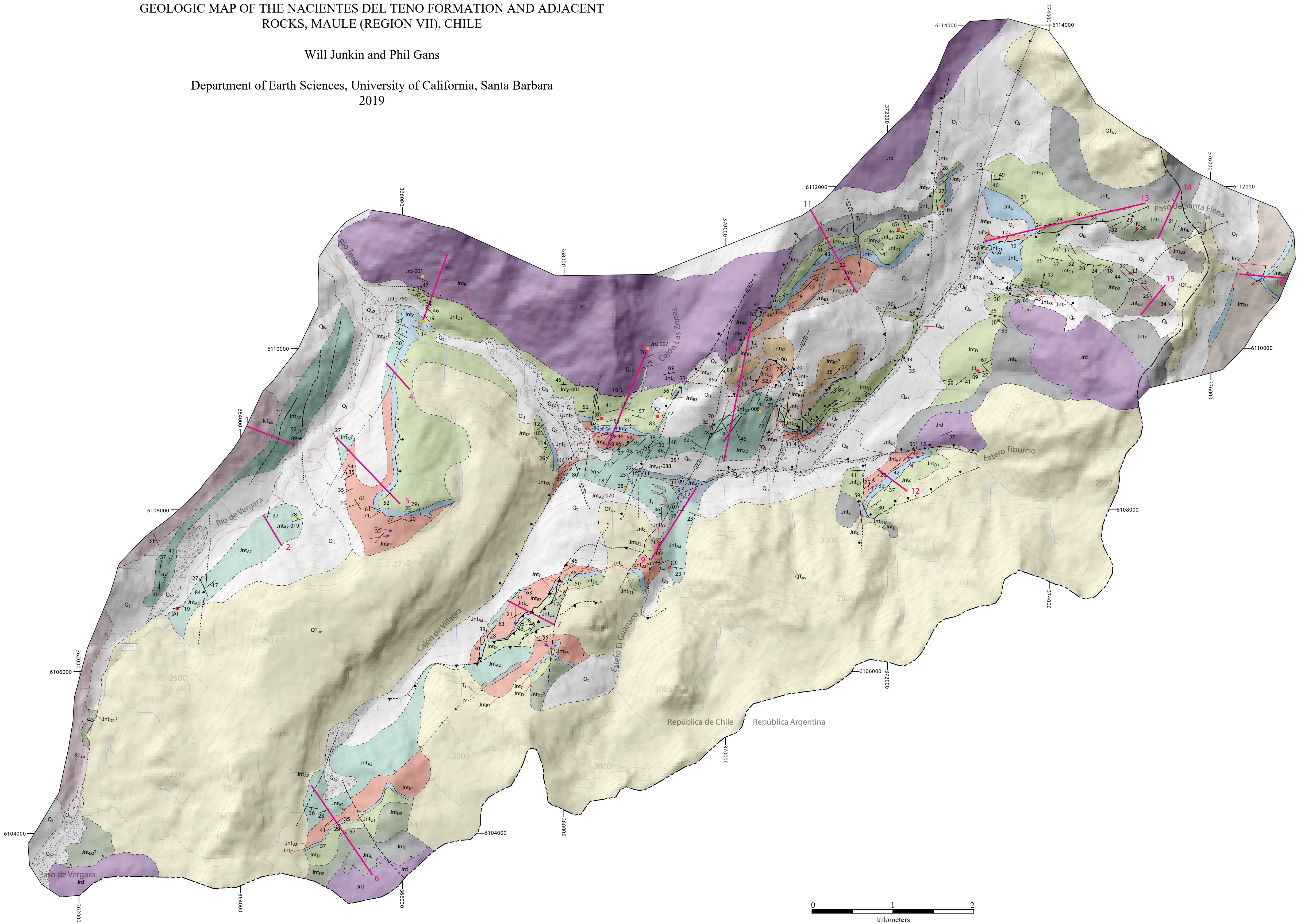


GEOLOGIC MAP OF THE NACIENTES DEL TENO FORMATION AND ADJACENT
ROCKS, MAULE (REGION VII), CHILE

Will Junkin and Phil Gans

Department of Earth Sciences, University of California, Santa Barbara
2019



Contact Certain and location accurate (solid), approximate or inferred (dashed), concealed (dotted).

Thrust fault Certain and location accurate (solid), approximate or inferred (dashed), concealed (dotted); symbol on upthrown side.

Normal fault Certain and location accurate (solid), approximate or inferred (dashed), concealed (dotted); symbol on downthrown side.

Strike-slip fault Certain and location accurate (solid), approximate or inferred (dashed), concealed (dotted).

Queried where identity, existence, lateral continuation, or location uncertain.

Inclined bedding

Overturned bedding

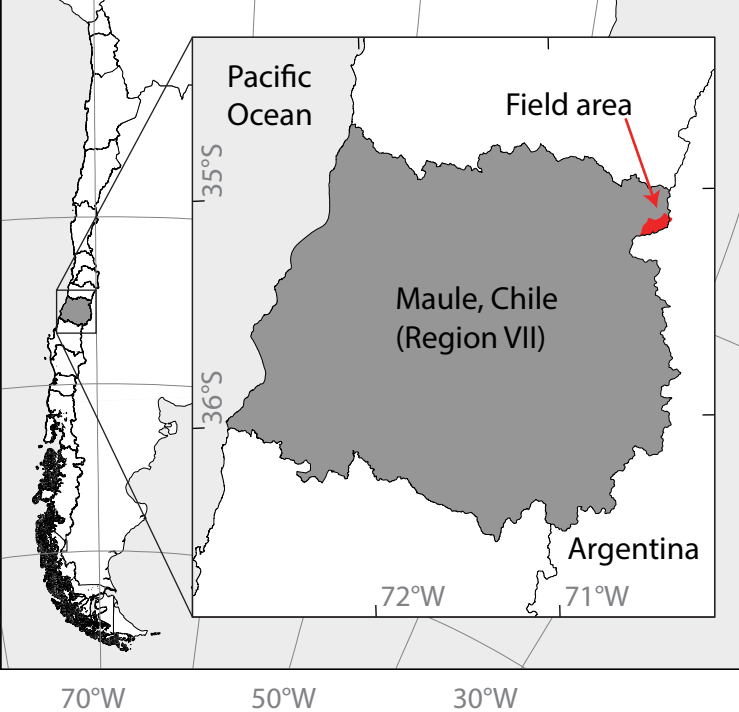
Fault plane and lineation

Sample locality

Ammonite locality

Stratigraphic column locality

Unidirectional paleocurrent indicator



UNIVERSAL TRANSVERSE MERCATOR (UTM) GRID AND JANUARY, 2017 MAGNETIC NORTH DECLINATION AT CENTER OF SHEET

Projection: UTM Zone 19S

Datum: World Geodetic System (WGS) 1984

Spot elevations, roads, streams, nomenclature, national border (unofficial): Instituto Geografico Militar de Chile "Lagunas de Teno" 25 Minute Series (1985)

Projection: Transverse Mercator

Datum: Provisional South American Datum 1956

Topographic contours and shaded relief base map: Shuttle Radar Topography Mission 1 Arc-Second Global Digital Elevation Model

Projection: UTM Zone 19S

Datum: WGS 1984

CONTOUR INTERVAL 50 METERS