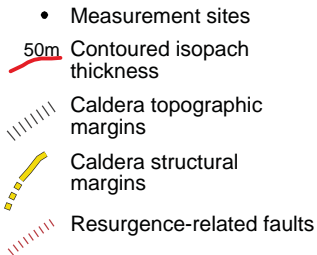
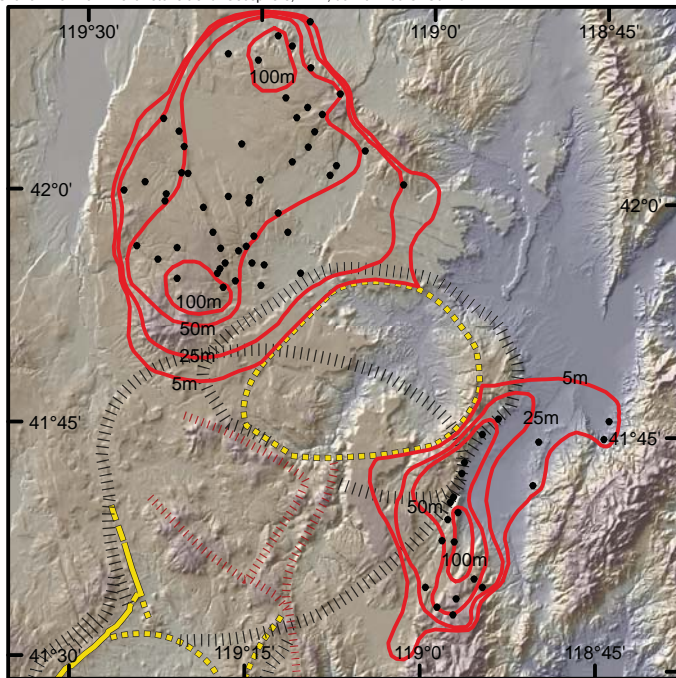
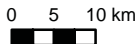


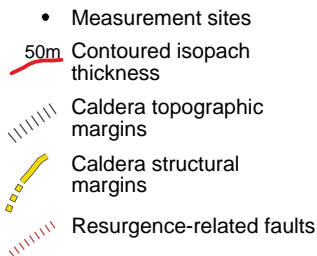
Idaho Canyon Tuff (*Miic*) Isopach Map



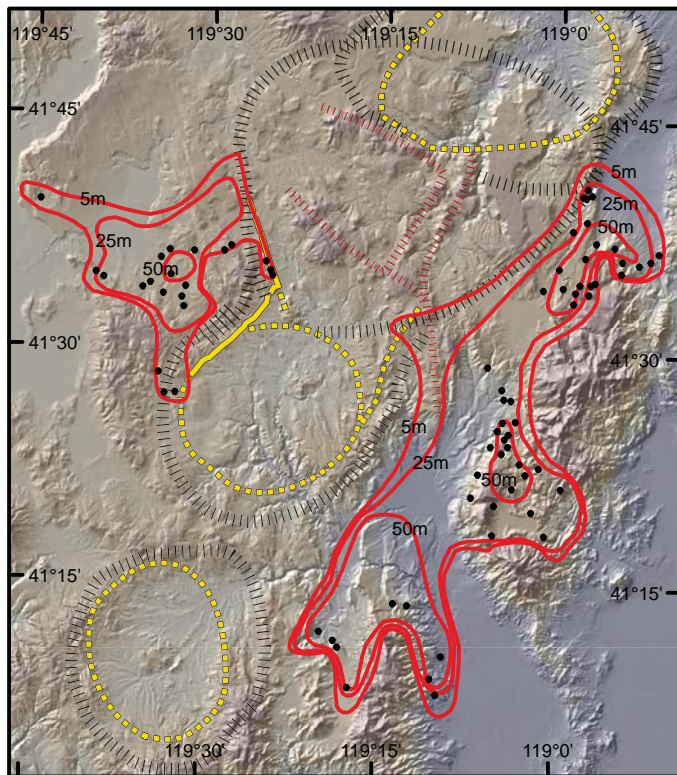
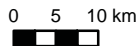
Volume: 52 km³
(excludes intracaldera volume)



Summit Lake Tuff (*Mis*) Isopach Map



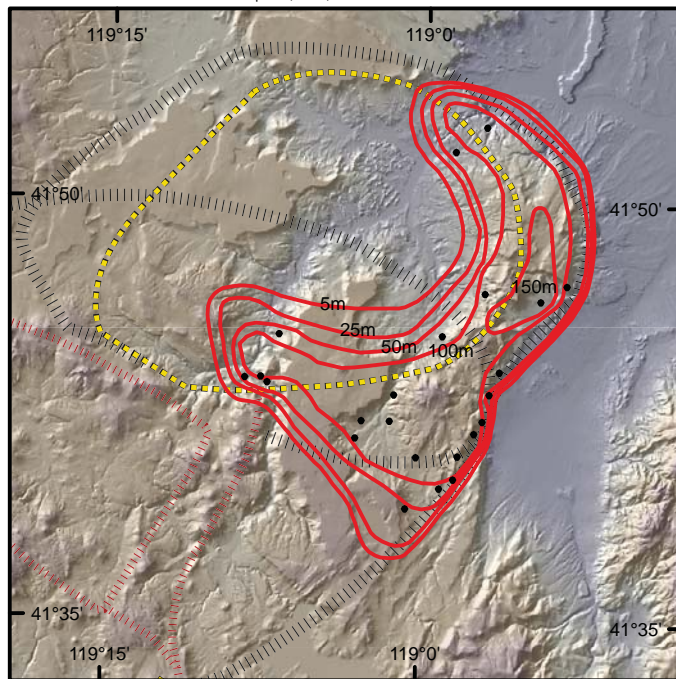
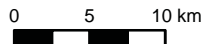
Volume: 31 km³
(excludes intracaldera volume)



Tuff of Big Mountain (*Mtbn*) Isopach Map

- Measurement sites
- 50m Contoured isopach thickness
- Caldera topographic margins
- Caldera structural margins
- Resurgence-related faults

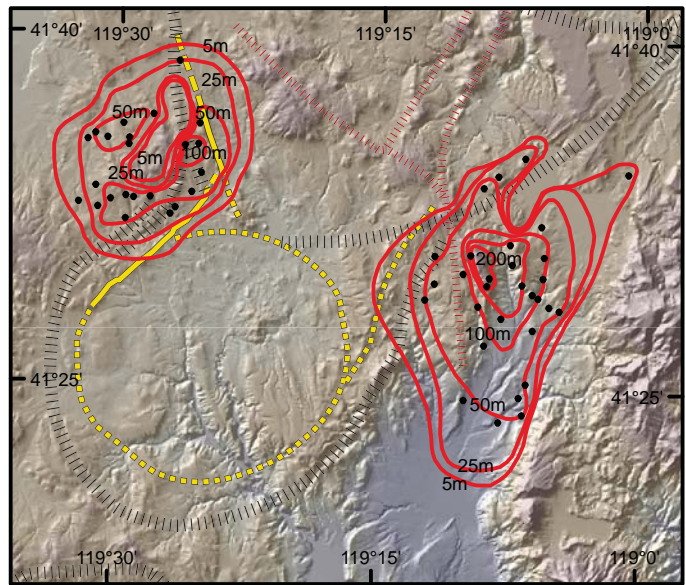
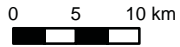
Volume: 23 km³



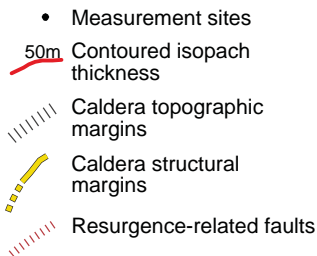
Tuff of Coyote Spring (*Mics*) to the west, Tuff of Trough Mountain (*Mttm*) to the East Isopach Map

- Measurement sites
- 50m Contoured isopach thickness
- Caldera topographic margins
- Caldera structural margins
- Resurgence-related faults

Mics Volume: 5 km³
Mttm Volume: 13 km³

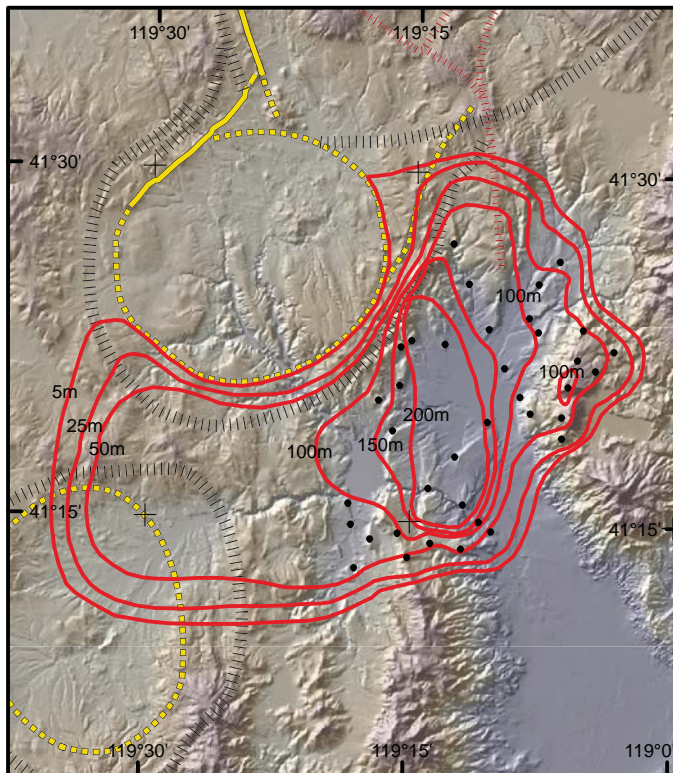


Soldier Meadow Tuff (*Mism*) Isopach Map

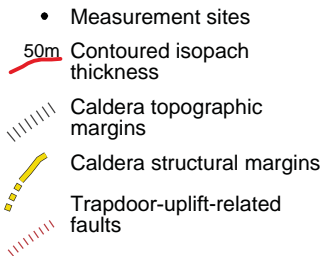


Volume: 65 km³
(excludes intracaldera volume)

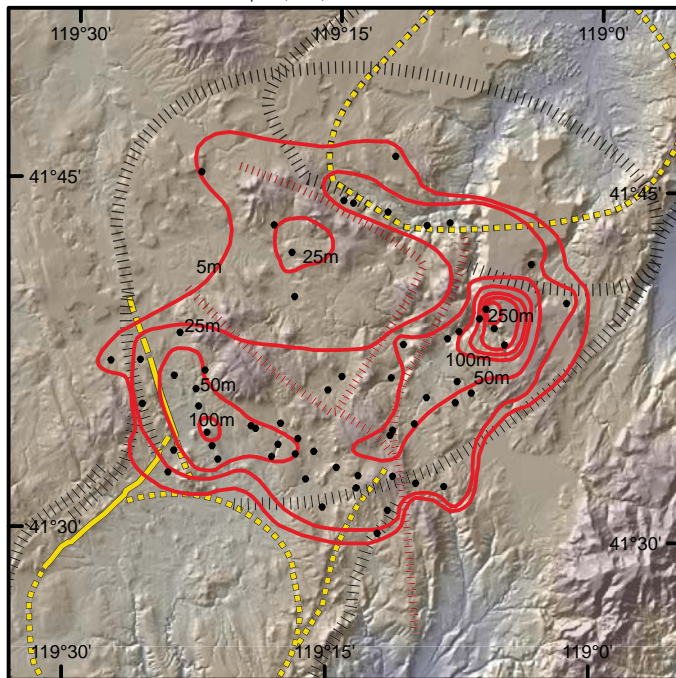
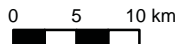
Evidence for southwest exposure
from lithics within the younger
Tuff of Yellow Rock Canyon.



Tuff of Alkali Flat and Tuff of Badger Mountain (*Mtab*) Isopach Map



Volume: 20 km³



Tuff of Yellow Rock Canyon (*Miy*) Isopach Map

- Measurement sites
- 50m Contoured isopach thickness
- Caldera topographic margins
- Caldera structural margins
- Resurgence-related faults

Volume: 50 km³
(excludes intracaldera volume)

