

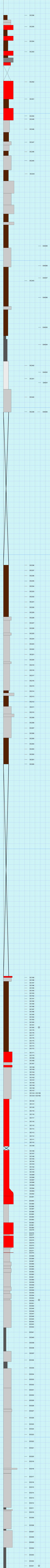
Marco Franceschi, Xin Jin, Zhiqiang Shi, Bin Chen, Nereo Preto, Guido Roghi, Jacopo Dal Corso, and Lu Han, 2022, High-resolution record of multiple organic carbon isotope excursions in lacustrine deposits of Upper Sinemurian through Pliensbachian (Early Jurassic) from the Sichuan Basin, China: GSA Bulletin, <https://doi.org/10.1130/B36235.1>.

Supplemental Material

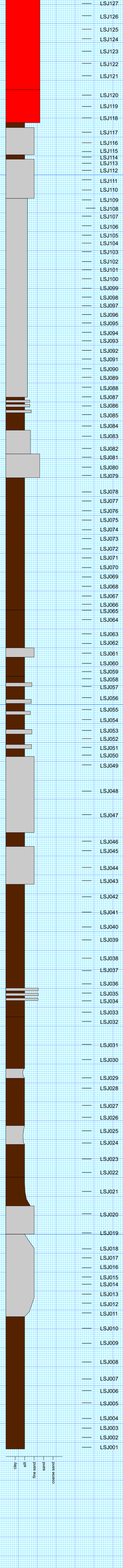
Figure S1. Stratigraphic log with indicated the positions of the samples collected for isotope and palynological analyses at the Dacao “A”, Dacao “B” and Liangshuijing sections.

Table S1. Results of $\delta^{13}\text{C}_{\text{org}}$ analyses of Dacao “A”, Dacao “B” and Liangshuijing sections. Data are expressed in ‰. The stratigraphic height reported (in meters) refers to Fig. S1 and therefore to the composite section constructed correlating the two localities.

DACAO "A"



LIANG SHUI JING



DACAO "B"

