

PLATE S1. Nannofossil genera *Amaurolithus* and *Ceratolithus*.

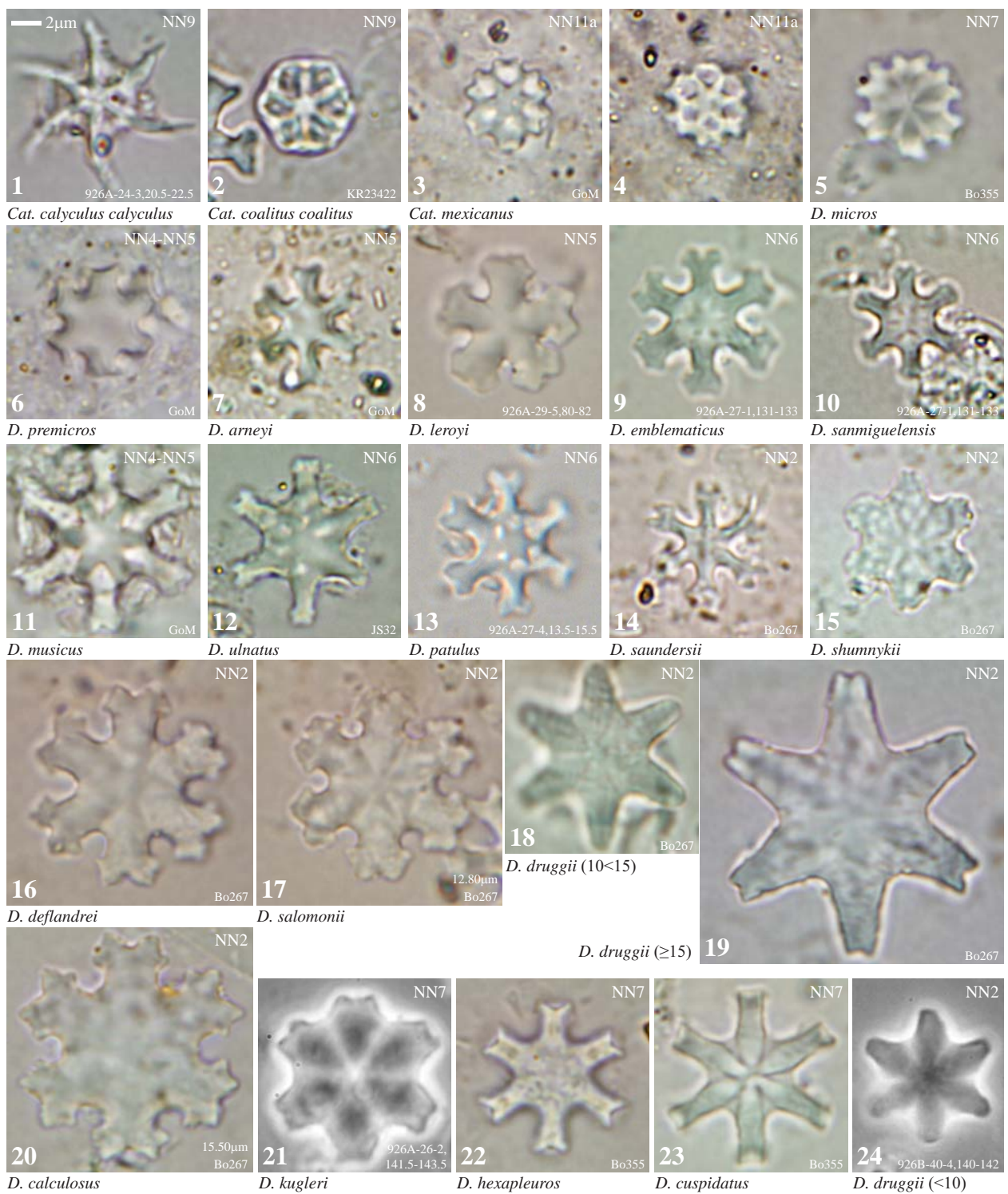


PLATE S2. Nannofossil genera *Catinaster* and *Discoaster*.



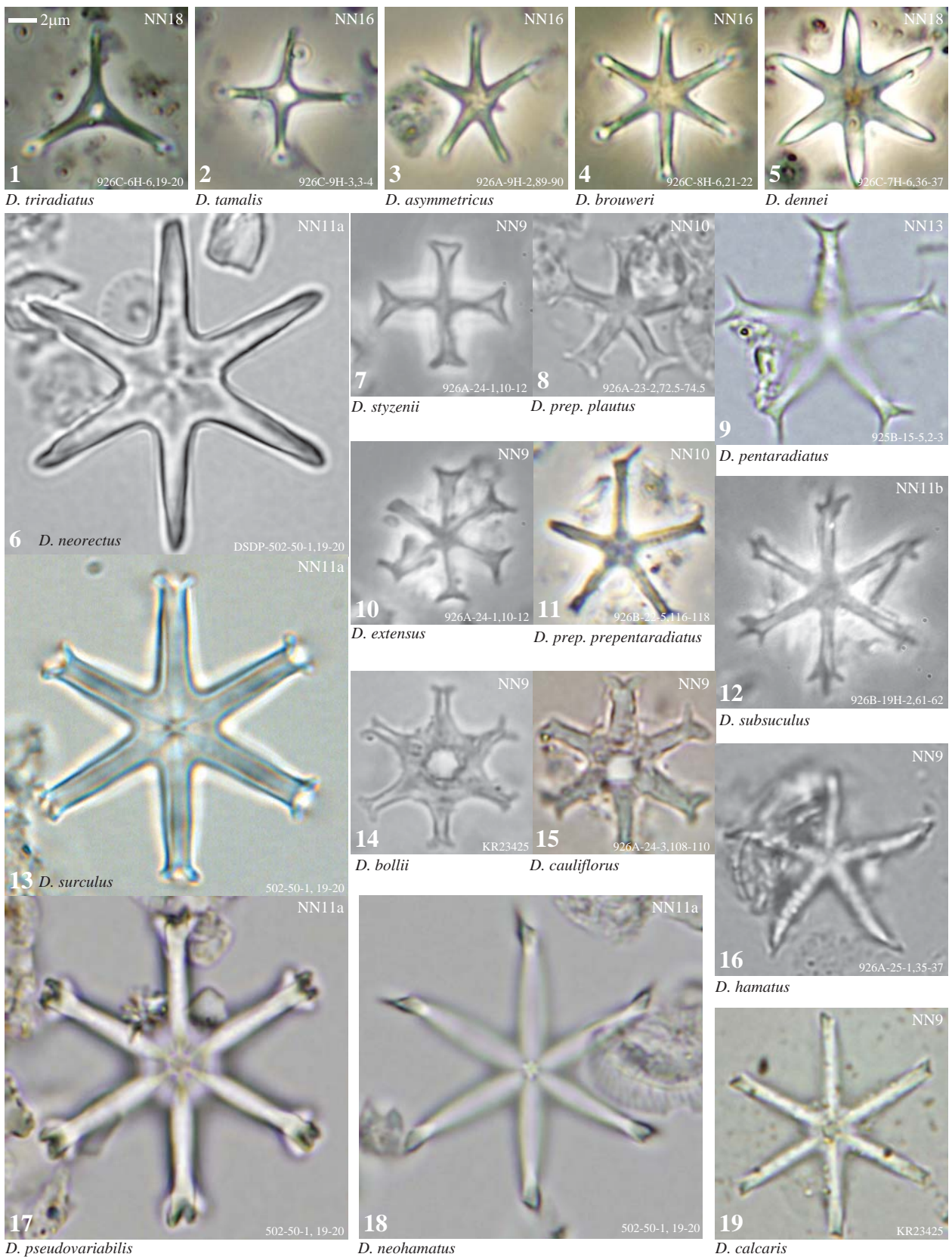


PLATE S3. Nannofossil genus *Discoaster* (upper Miocene-Pliocene).

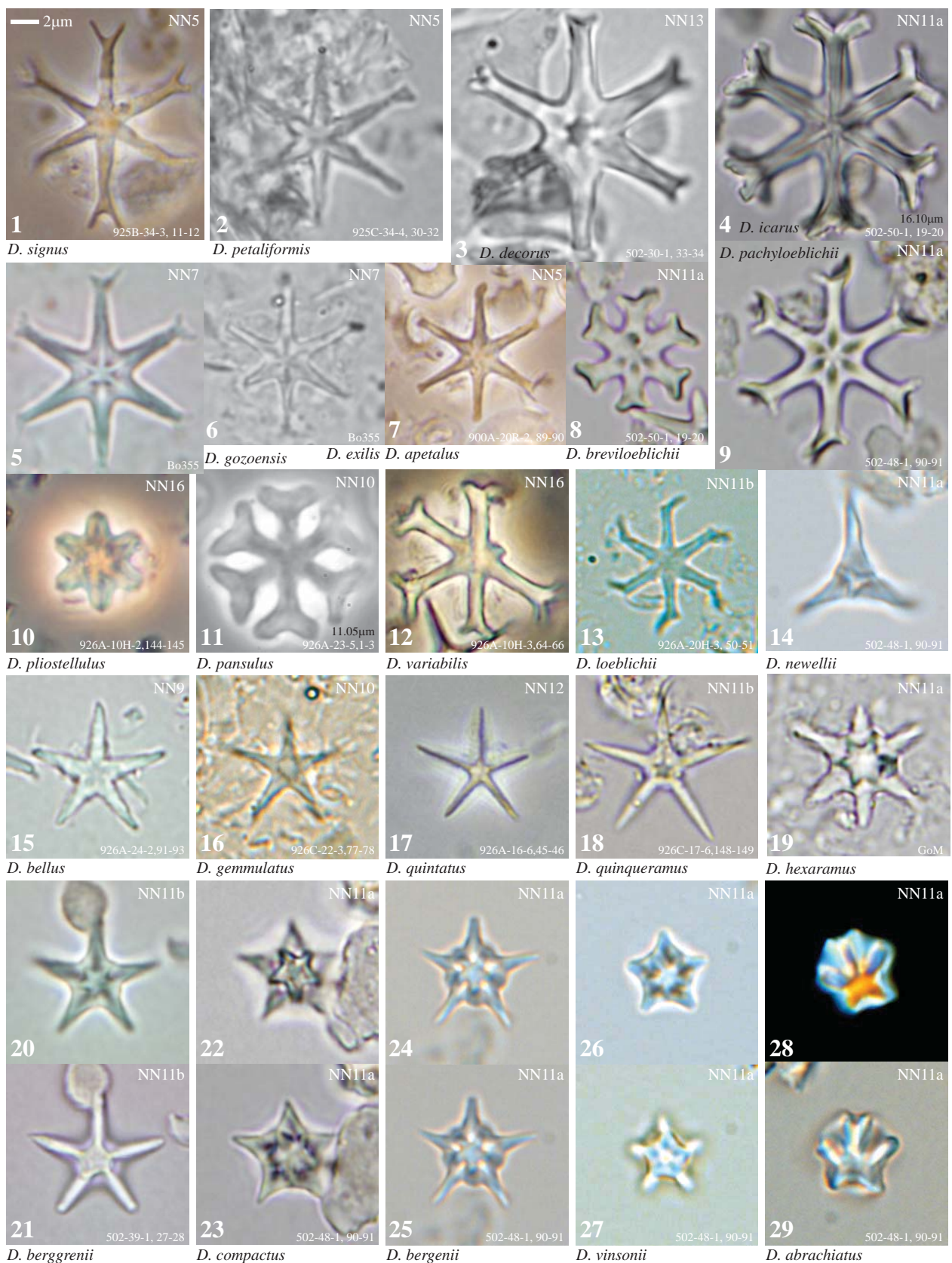


PLATE S4. Nannofossil genus *Discoaster* (middle-upper Miocene).



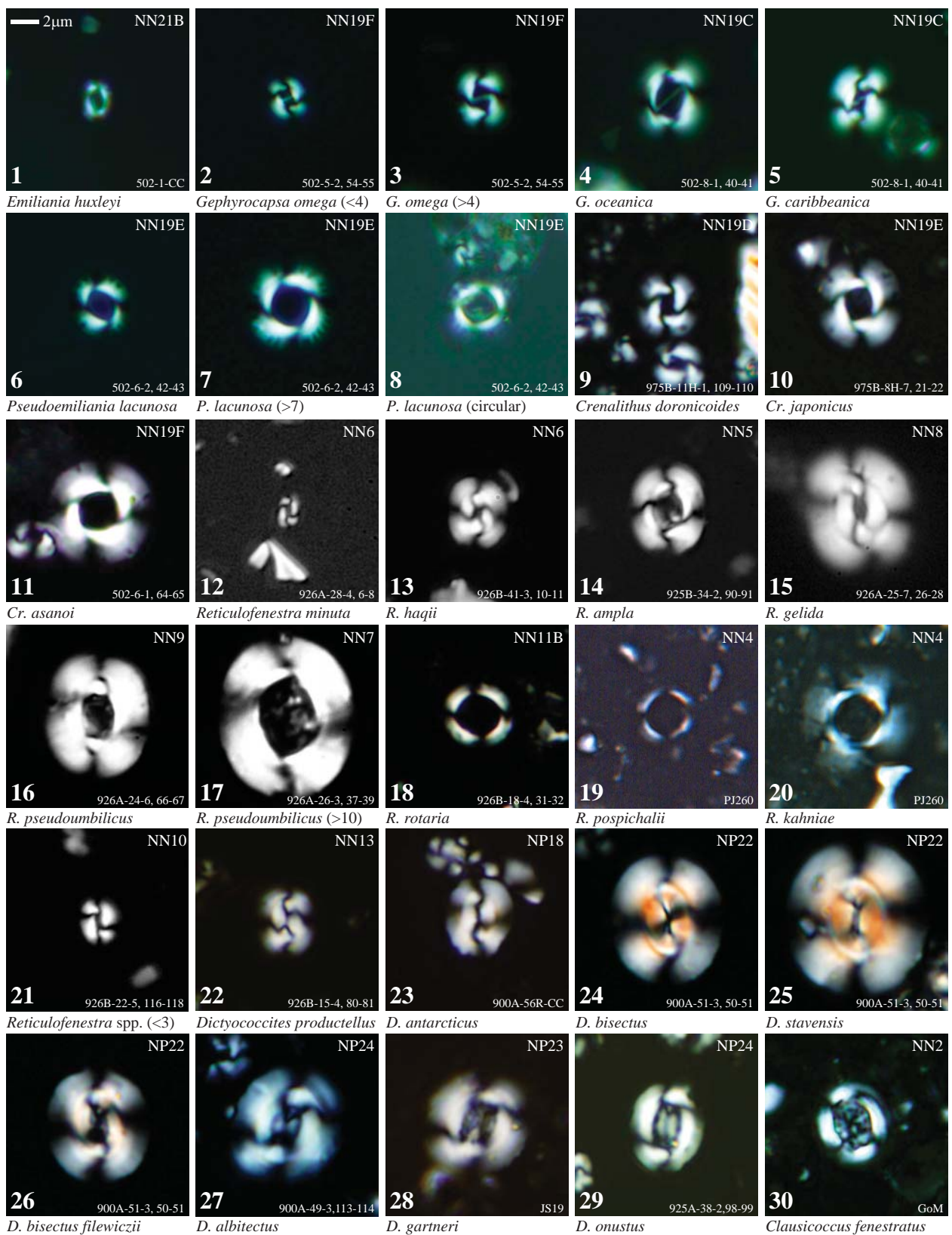


PLATE S5. Nannofossil Family Prinsiaceae

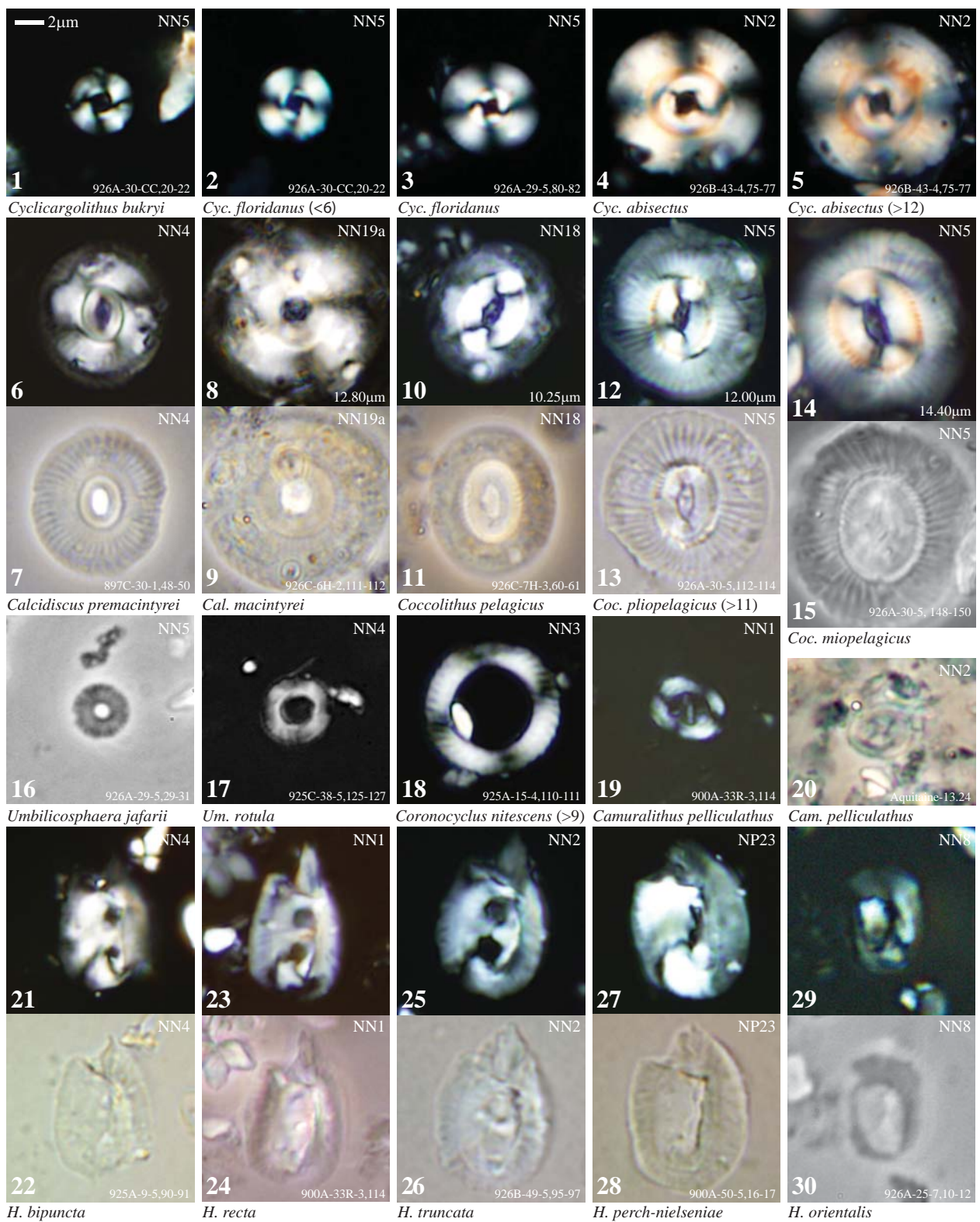


PLATE S6. Nannofossil Family Prinsiaceae and genus *Helicosphaera*



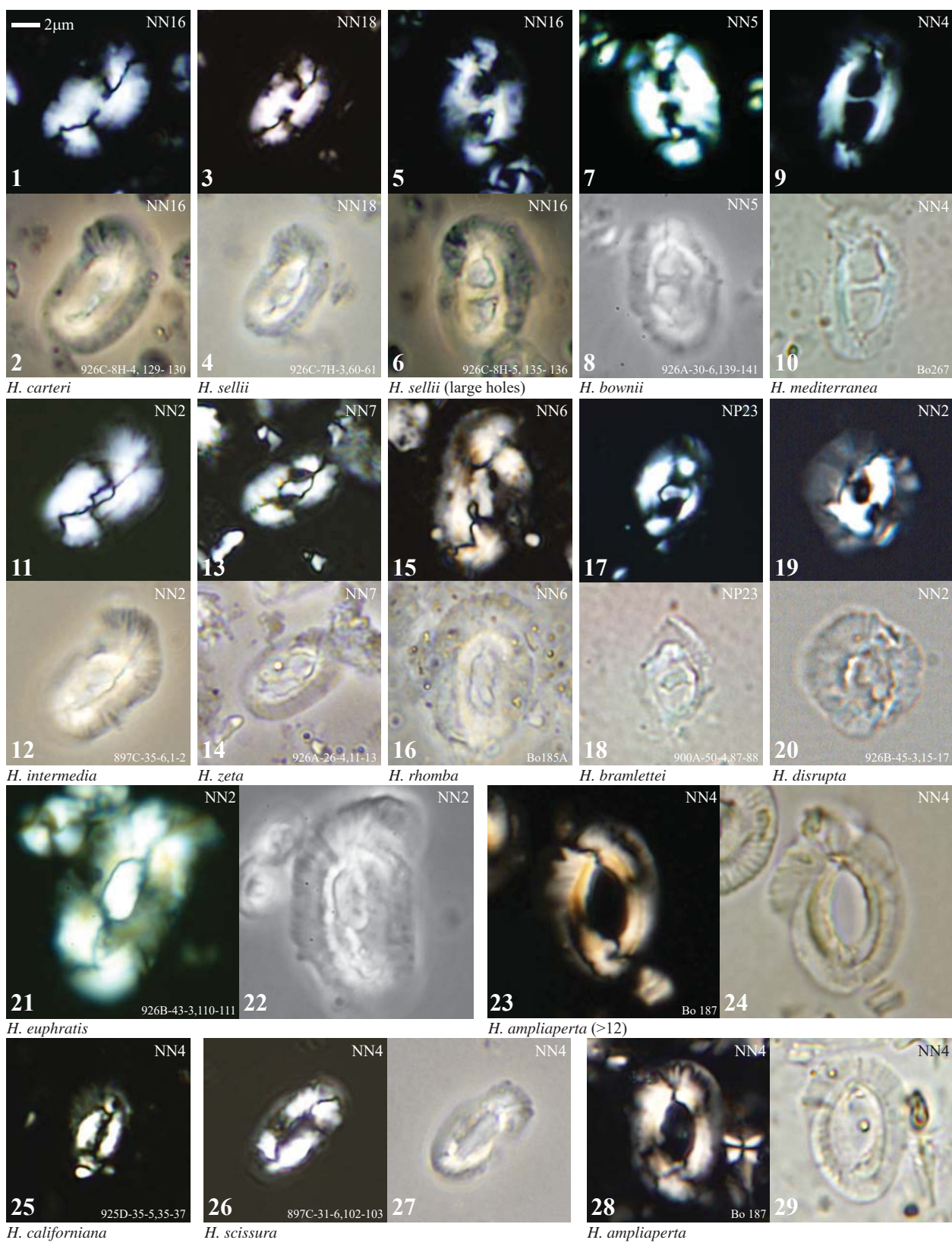
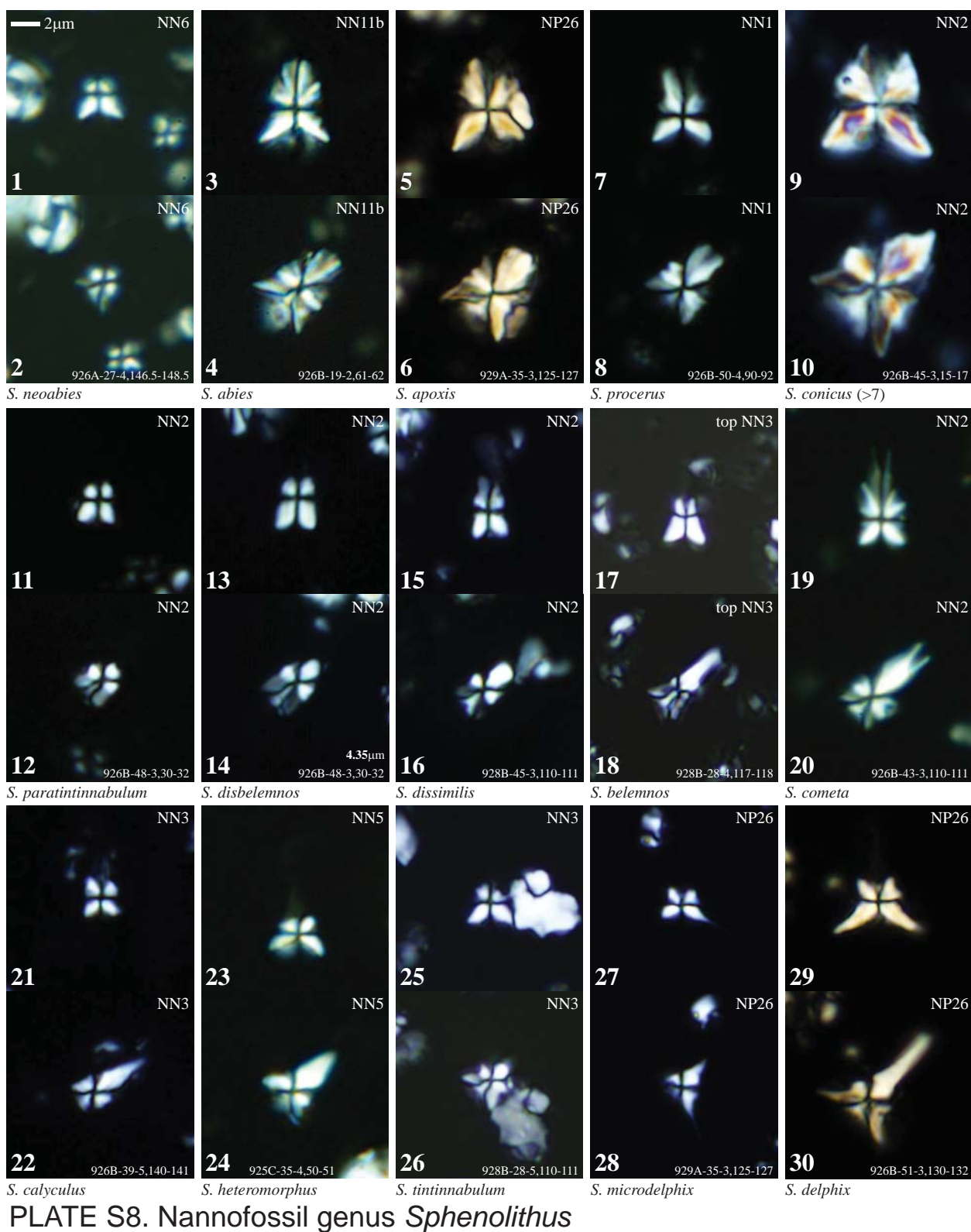


PLATE S7. Nannofossil genus *Helicosphaera*





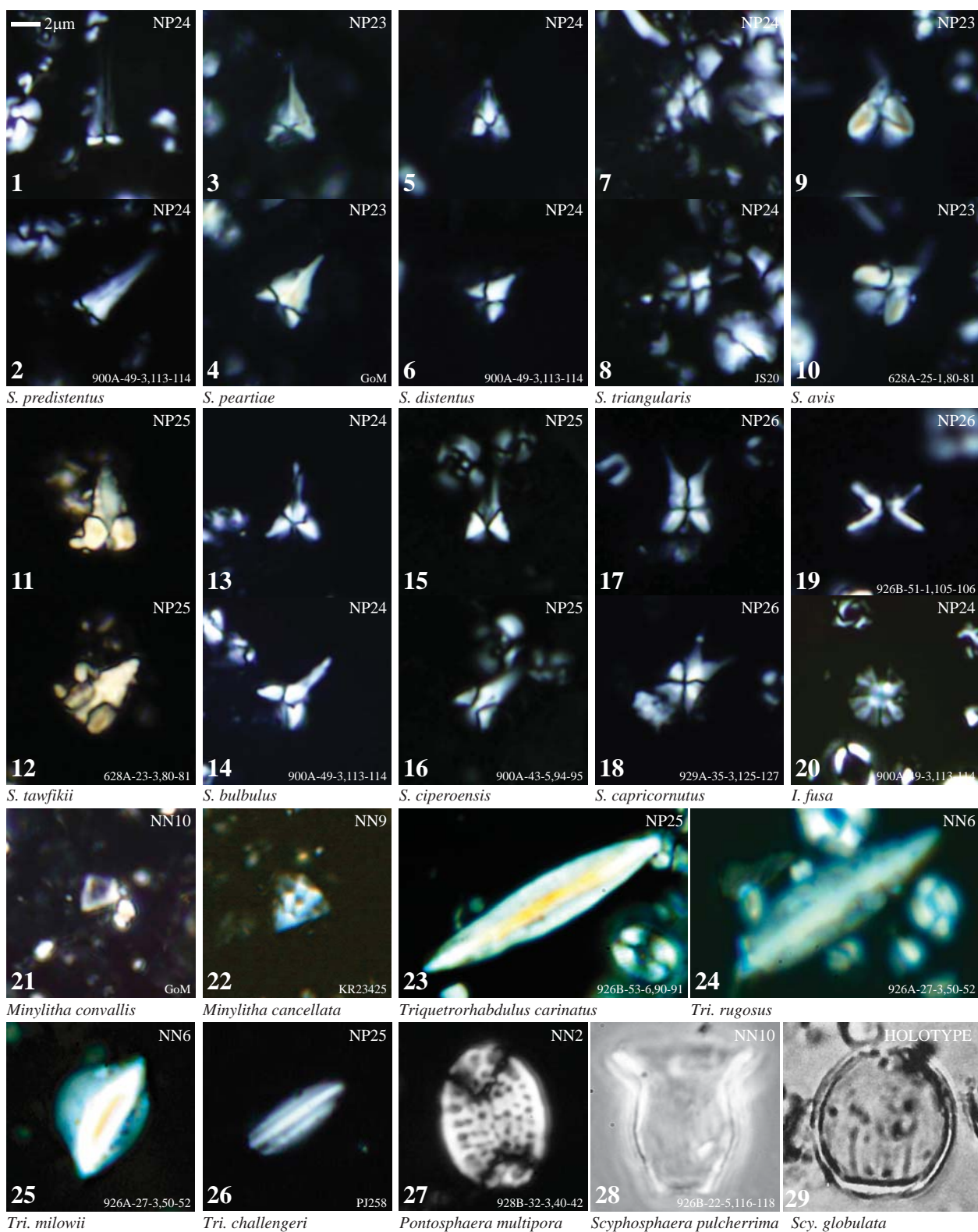


PLATE S9. Nannofossil genus *Sphenolithus* and assorted genera