

Bartschi, N.C., Saylor, J.E., Lapen, T.J., Blum, M.D., Pettit, B.S., and Andrea, R.A., 2018, Tectonic controls on Late Cretaceous sediment provenance and stratigraphic architecture in the Book Cliffs, Utah: GSA Bulletin, <https://doi.org/10.1130/B31927.1>.

## **Data Repository**

**Table DR1.** Detrital Zircon U-Pb Samples

**Table DR2.** DZ U-Pb Ages - ACCEPTED

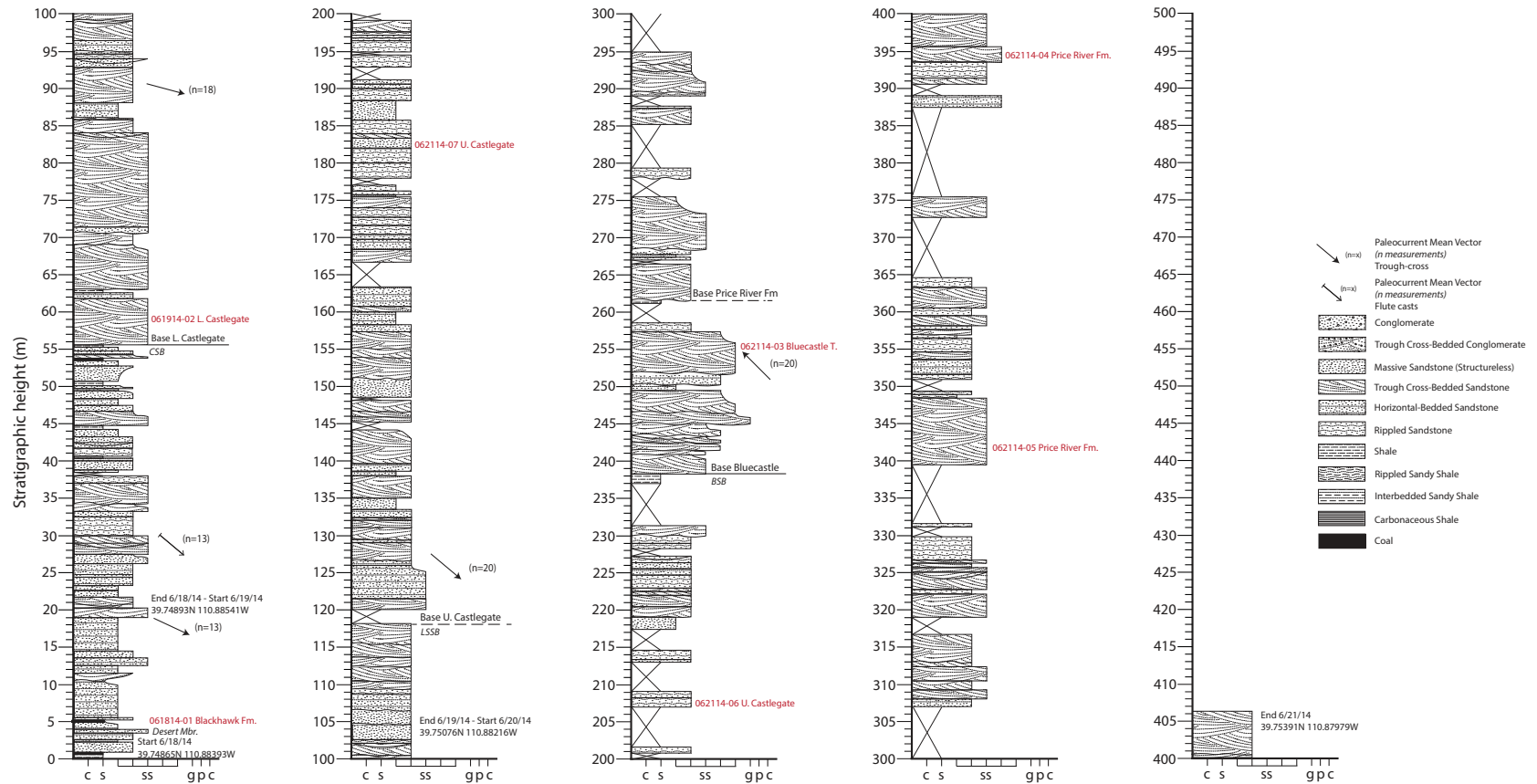
**Table DR3.** DZ U-Pb Ages - REJECTED

**Table DR4.** Provenance Groups

**Table DR5.** Mixture Modeling Results

**SECTION 1:**  
**STRATIGRAPHIC COLUMNS**

## Price Canyon Stratigraphic Column



**Figure DR1.** Stratigraphic column of Price Canyon.

## Tuscher Canyon Stratigraphic Column

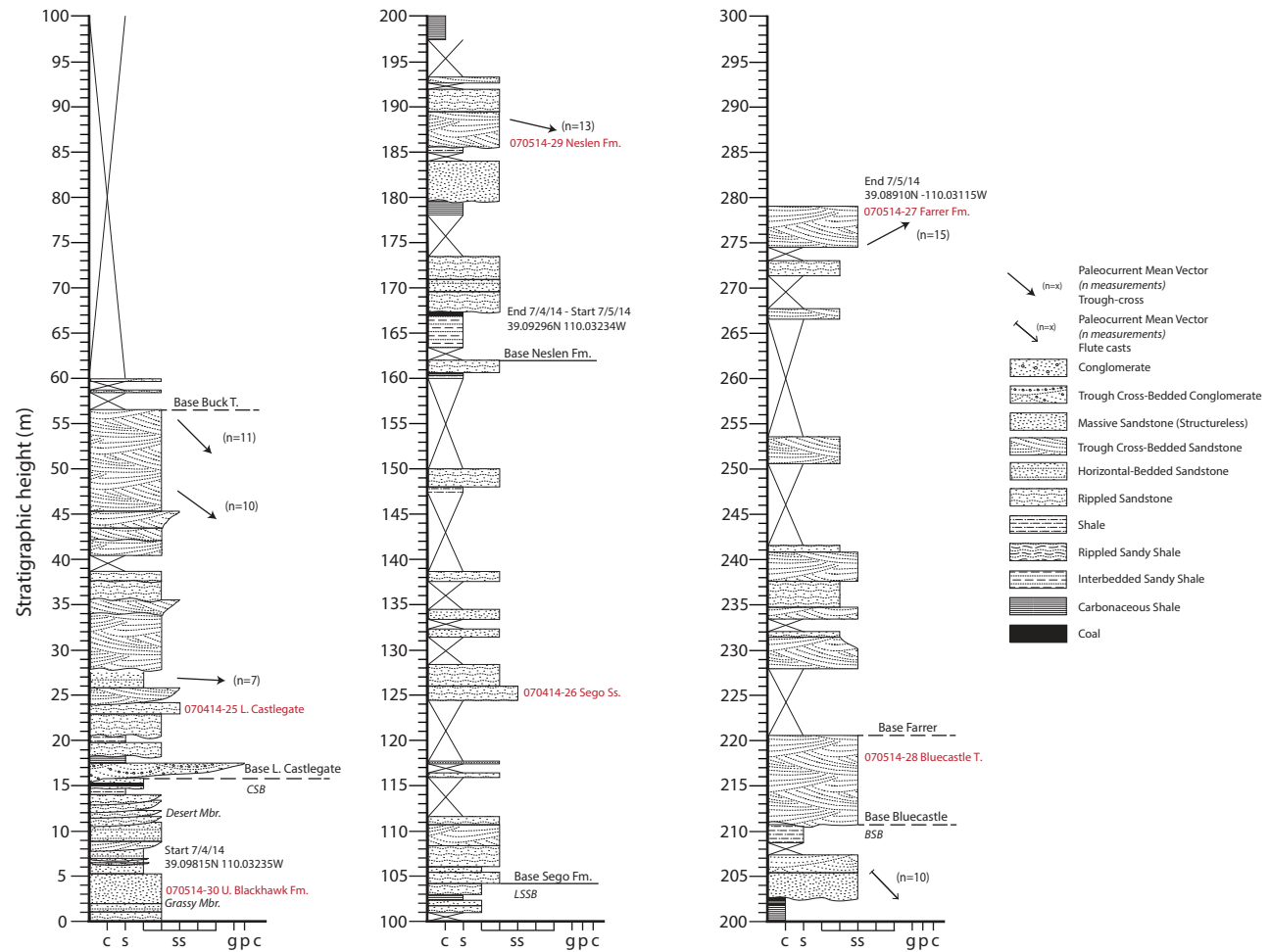
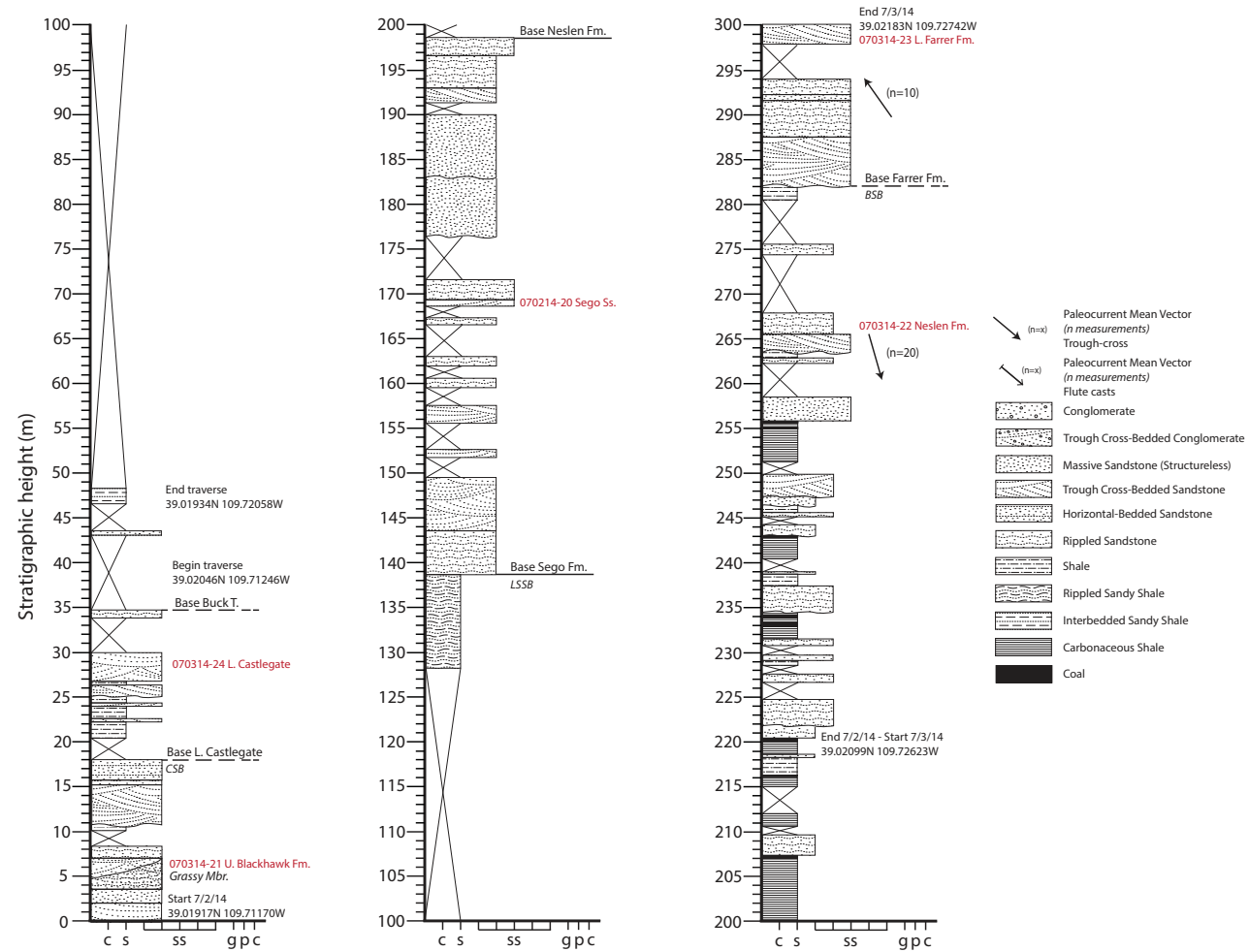


Figure DR2. Stratigraphic column of Tuscher Canyon.

## Thompson Canyon Stratigraphic Column



**Figure DR3.** Stratigraphic column of Thompson Canyon.

## Rilda Canyon Stratigraphic Column

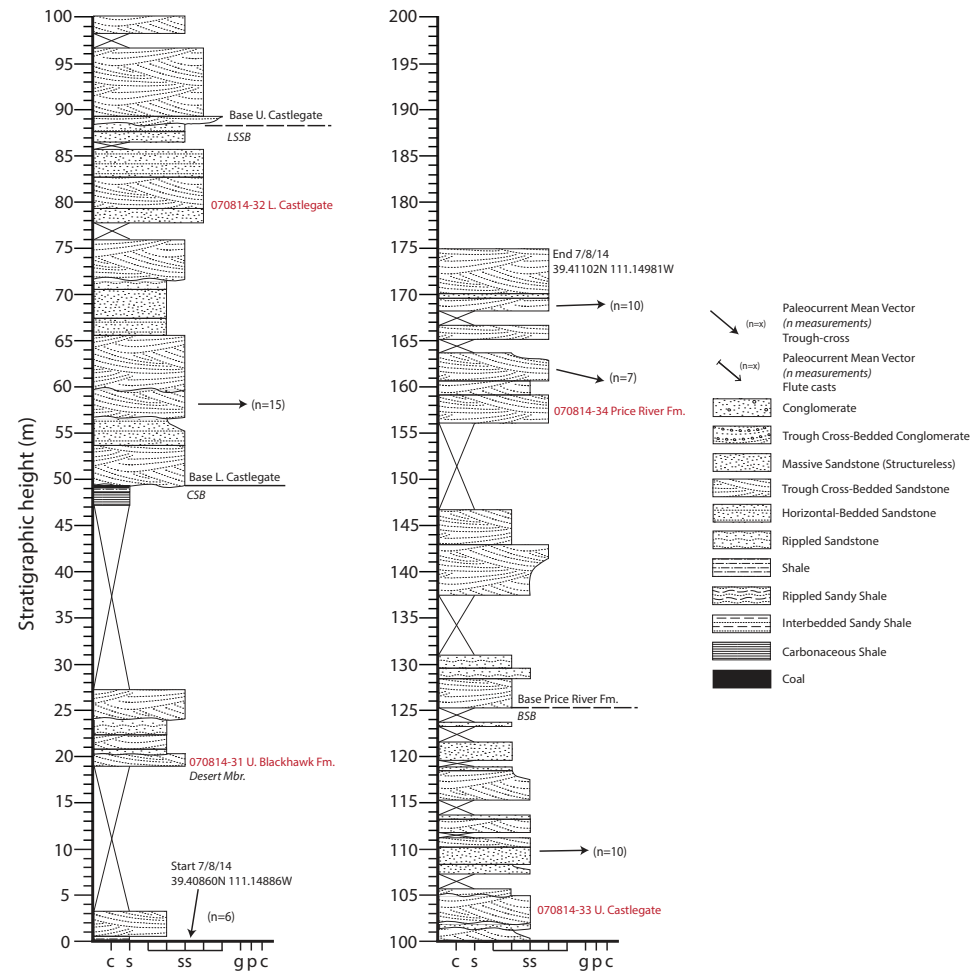


Figure DR4. Stratigraphic column of Rilda Canyon.

## Ferron Canyon Stratigraphic Column

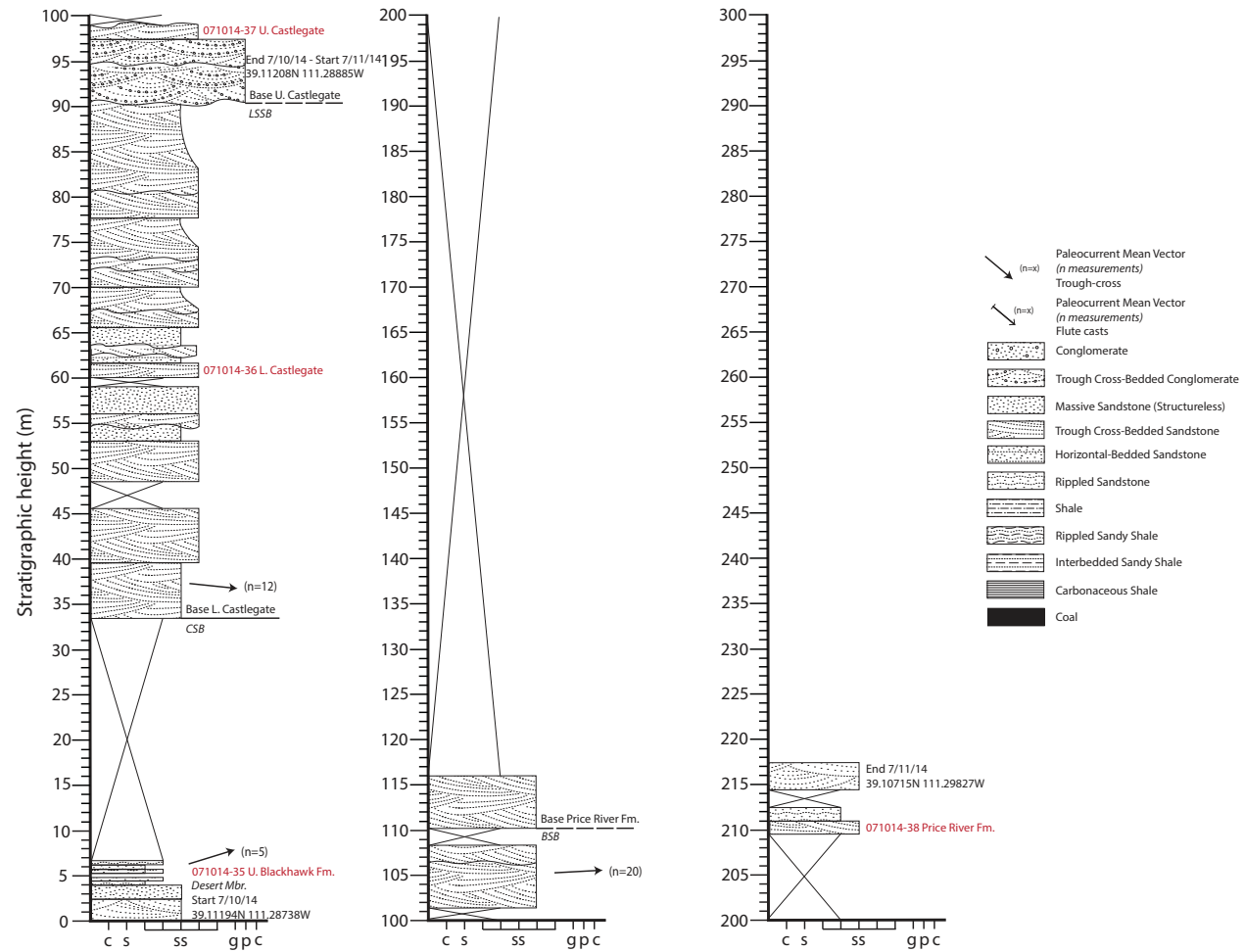


Figure DR5. Stratigraphic column of Ferron Canyon.

**SECTION 2:**  
SUPPLEMENTAL TABLES



Table DR1. Detrital Zircon U-Pb Samples

Location	Sample	Formation	WGS84	
			Latitude	Longitude
Price Canyon	062114-05	Price River Fm.	39.75326	-110.88008
	062114-03	Bluecastle T.	39.75214	-110.88029
	150413-04	Bluecastle T.	39.75196	-110.88058
	150413-03	U. Castlegate	39.75205	-110.88130
	062114-07	U. Castlegate	39.75128	-110.88151
	150413-02	L. Castlegate	39.75066	-110.88214
	061914-02	L. Castlegate	39.75122	-110.88399
	150413-01	Blackhawk Fm.	39.74887	-110.88361
	061814-01	Blackhawk Fm.	39.74881	-110.88380
Horse Canyon	160413-02	Price River Fm.	39.47688	-110.32913
	160413-01	Price River Fm.	39.47520	-110.33013
	BC-07 <sup>a</sup>	Bluecastle T.	39.47735	-110.32828
	BC-08 <sup>a</sup>	U. Castlegate	39.47596	-110.33566
	BC-09 <sup>a</sup>	L. Castlegate	39.47075	-110.34226
	BC-10 <sup>a</sup>	Blackhawk Fm.	39.47110	-110.34435
	BC-11 <sup>a</sup>	Blackhawk Fm.	39.46821	-110.34554
Tuscher Canyon	070514-27	Farrer Fm.	39.08910	-110.03115
	170413-03	Farrer Fm.	39.08532	-109.98795
	070514-28	Bluecastle T.	39.09057	-110.03240
	170413-02	Neslen Fm.	39.08339	-109.99080
	170413-01	Neslen Fm.	39.08231	-109.99068
	070514-29	Neslen Fm.	39.09200	-110.03239
	070414-26	Sego Ss.	39.09375	-110.03102
	070414-25	L. Castlegate	39.09780	-110.03191
	070514-30	Blackhawk Fm.	39.09788	-110.03314
Thompson Canyon	070314-23	Farrer Fm.	39.02183	-109.72742
	070314-22	Neslen Fm.	39.02179	-109.72634
	070214-20	Sego Ss.	39.01818	-109.72245
	070314-24	L. Castlegate	39.01996	-109.71201
	070314-21	Blackhawk Fm.	39.01990	-109.71172
Rilda Canyon	070814-34	Price River Fm.	39.41083	-111.14962
	070814-33	U. Castlegate	39.40940	-111.15028
	070814-32	L. Castlegate	39.40914	-111.15003
	070814-31	Blackhawk Fm.	39.40913	-111.14902
Ferron Canyon	071114-38	Price River Fm.	39.10722	-111.29817
	071114-37	U. Castlegate	39.11208	-111.28885
	071114-36	L. Castlegate	39.11211	-111.28809
	071014-35	Blackhawk Fm.	39.11307	-111.28731

<sup>a</sup> Released by ExxonMobil Upstream Research**Table DR1.** Summary of samples analyzed using detrital zircon U-Pb dating.