

GSA Supplemental Data Item 2016070

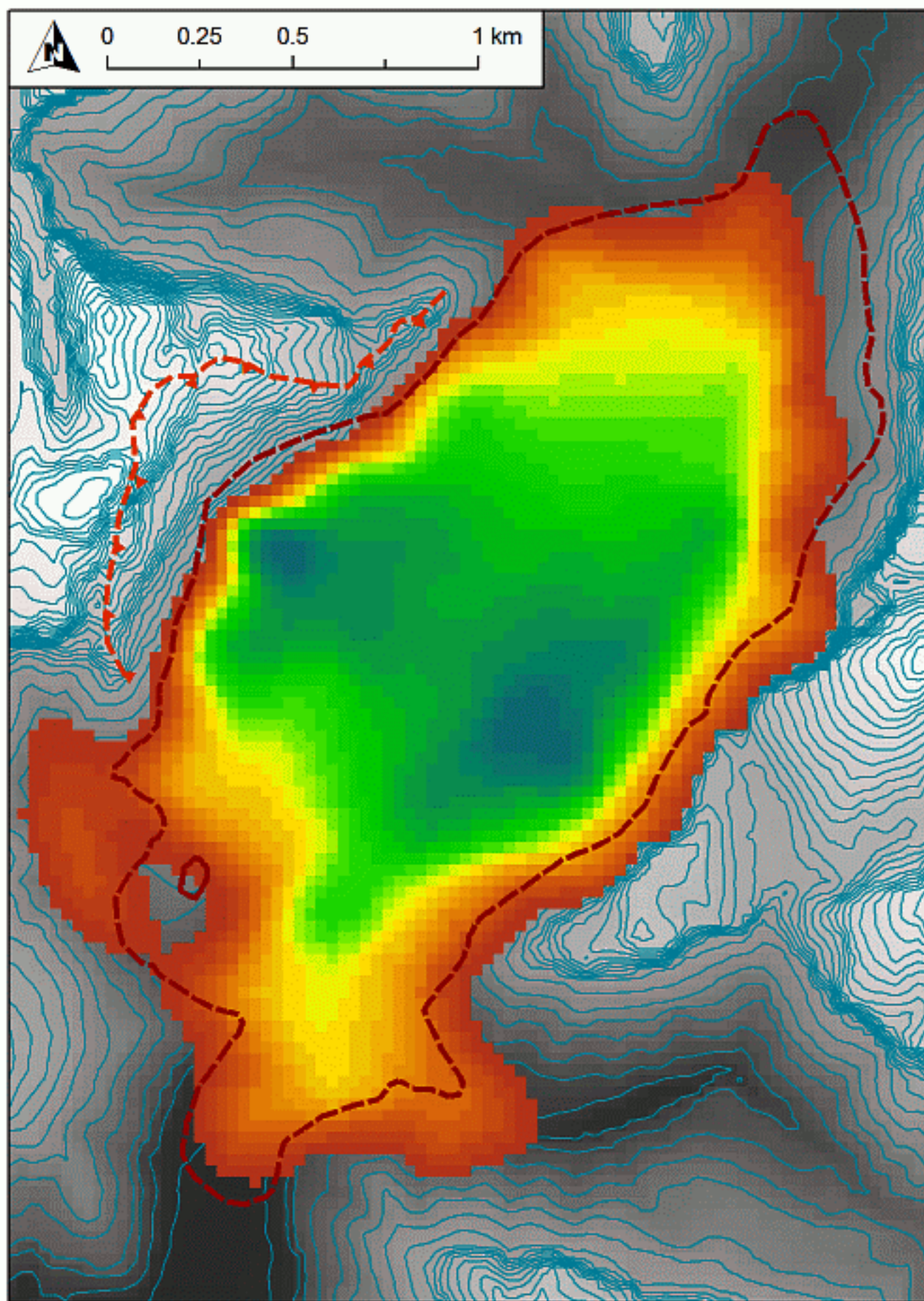
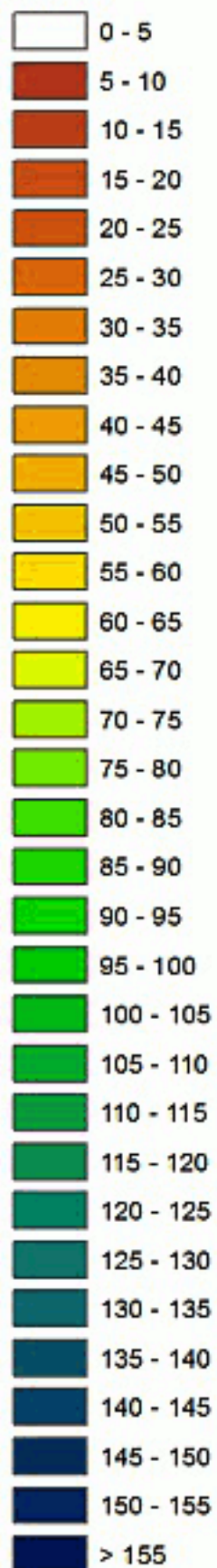
GSA Today science article v. 26, no. 6, doi: 10.1130/GSATG269A.1

Supplementary Table 1: Cosmogenic nuclide surface exposure dating input values and results. Table format follows data entry requirements for the CRONUS online exposure age calculator, for further details see Balco et al. (2008).

Sample	Latitude	Longitude	Elevation	Thickness	Density	Shielding factor	Erosion rate	^{10}Be	+/-	Exposure age ¹	External uncertainty
	DD	DD	m	cm	g cm ⁻²		cm a ⁻¹	atoms g ⁻¹	atoms g ⁻¹	a	a
Z-1	37.23291	-112.96532	1386.6	1.50	2.20	0.9629	0.001	66409	26069	6619	2745
Z-2	37.23460	-112.96555	1382.1	1.50	2.20	0.9620	0.001	50126	12289	5141	1333
Z-3	37.23130	-112.96959	1437.7	1.75	2.20	0.9510	0.001	43369	11550	4378	1223
Z-4	37.22537	-112.97613	1398.1	2.00	2.20	0.9342	0.001	80512	16405	8266	1837
Z-5	37.22304	-112.97697	1387.2	1.50	2.20	0.9468	0.001	40201	8457	4229	941
Z-6	37.22390	-112.97637	1388.9	2.00	2.20	0.9459	0.001	46174	8454	4828	947
Z-7	37.22662	-112.97212	1434.6	1.75	2.20	0.9639	0.001	47223	7683	4693	824
Z-8	37.22761	-112.97120	1440.2	1.50	2.20	0.9656	0.001	68384	9940	6546	1051
Z-9a	37.23106	-112.96649	1400.4	1.50	2.20	0.9673	0.001	45759	8459	4639	916
Z-9b	37.23135	-112.96682	1403.5	1.50	2.20	0.9675	0.001	46333	9873	4683	1058
Z-10a	37.21935	-112.97224	1291.4	2.00	2.20	0.9665	0.001	52935	10341	5729	1201
Z-10b	37.21871	-112.97259	1282.8	2.00	2.20	0.9698	0.001	42800	9173	4720	1073

¹ Values calculated using the Northeast North America calibration data set (Balco et al., 2009) and a time-dependent spallation production model (Lal, 1991; Stone, 2000)

**Deposit thickness
meters**



Supplemental Figure S1 static version; [click for animation](#).

